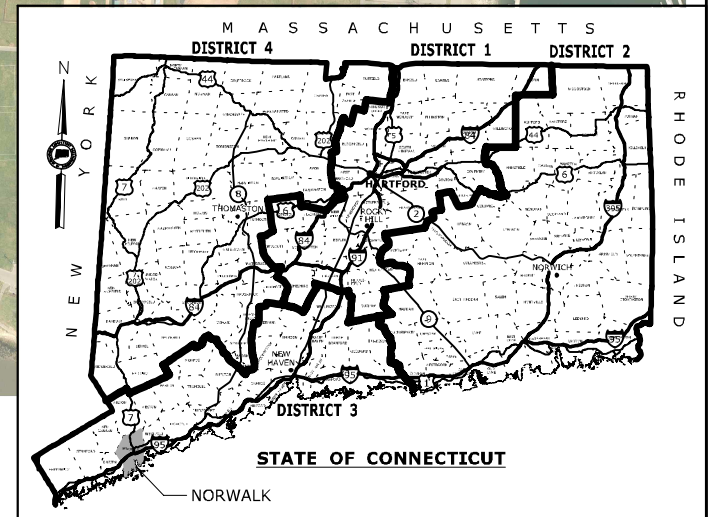


- LEGEND:**
- NATIONAL REGISTER OF HISTORIC PLACES (NRHP) - LISTED RESOURCE
 - NRHP - ELIGIBLE RESOURCE
 - NRHP - POTENTIALLY ELIGIBLE RESOURCE PER PROJECT FONSI 2017
 - NRHP - LISTED HISTORIC DISTRICT
 - NRHP - POTENTIALLY ELIGIBLE HISTORIC DISTRICT PER PROJECT FONSI 2017

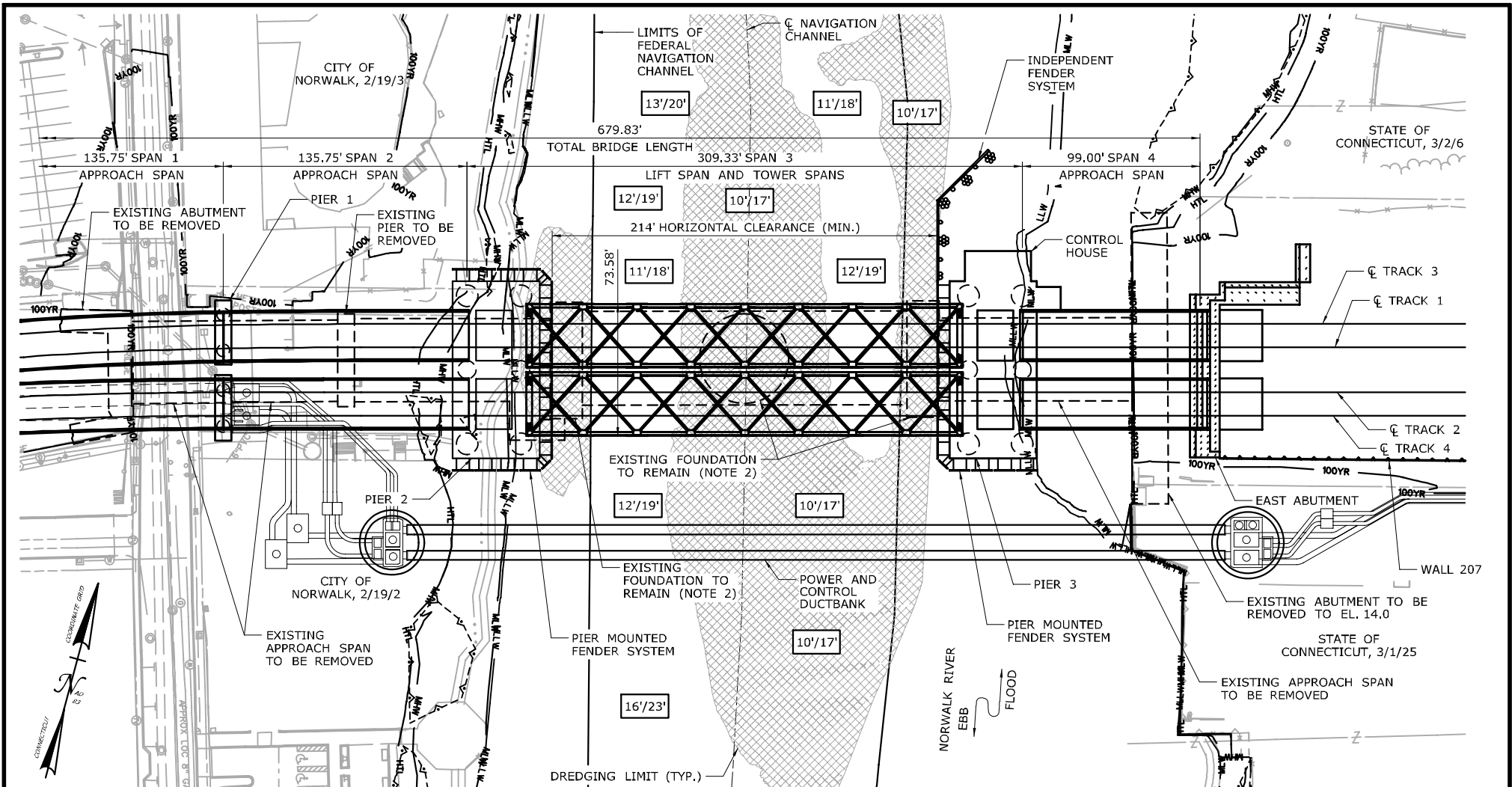
NOTE: CATENARY STRUCTURES ARE LOCATED APPROXIMATELY EVERY 200 FEET ALONG THE RAILROAD LINE

PLAN



CONCEPTUAL PLANS UTILIZED TO OBTAIN COAST GUARD BRIDGE PERMIT

SCALE: SCALE 1" = 400' 	DRAWN: T. ADINOLFI CHECKED: V. ROBBINS APPROVED: C. BROWN	SIGNATURE BLOCK: <small>HNTB CORPORATION 25 CORPORATE BLVD., 31TH FLOOR ROCKY HILL, CT 06067 TEL: (860) 527-9373</small>	 STATE OF CONNECTICUT DEPARTMENT OF TRANSPORTATION	PROJECT TITLE: WALK BRIDGE REPLACEMENT OVER THE NORWALK RIVER BRIDGE NO. 04288R NORWALK RIVER MILE 0.1	PROJECT LOCATION: NORWALK FAIRFIELD COUNTY, CT DRAWING TITLE: LOCATION VICINITY HISTORIC RESOURCES MAP	PROJECT NO.: 0301-0176 DATE: REV 02-04-2022 DRAWING NO.: 1 OF 6
-----------------------------------	--	---	--	--	---	---



PLAN

DATUMS:

HORIZONTAL DATUM IS NAD 83.
VERTICAL DATUM IS NAVD 88.

NOTES:

1. NAVIGATION CHANNEL LIMITS PROVIDED BY THE U.S. ARMY CORPS OF ENGINEERS FEDERAL NAVIGATION PROJECT FOR NORWALK HARBOR, U.S. ARMY CORPS OF ENGINEERS, AFTER DREDGE SURVEY, SUPPLEMENTAL PROJECT DRAWING 4/11/2014.
2. EXISTING SWING SPAN FOUNDATIONS SHALL BE REMOVED TO THE BOTTOM OF THE TIMBER MAT (APPROXIMATELY EL -20), PER COORDINATION WITH THE UNITED STATES ARMY CORPS OF ENGINEERS.

LEGEND:

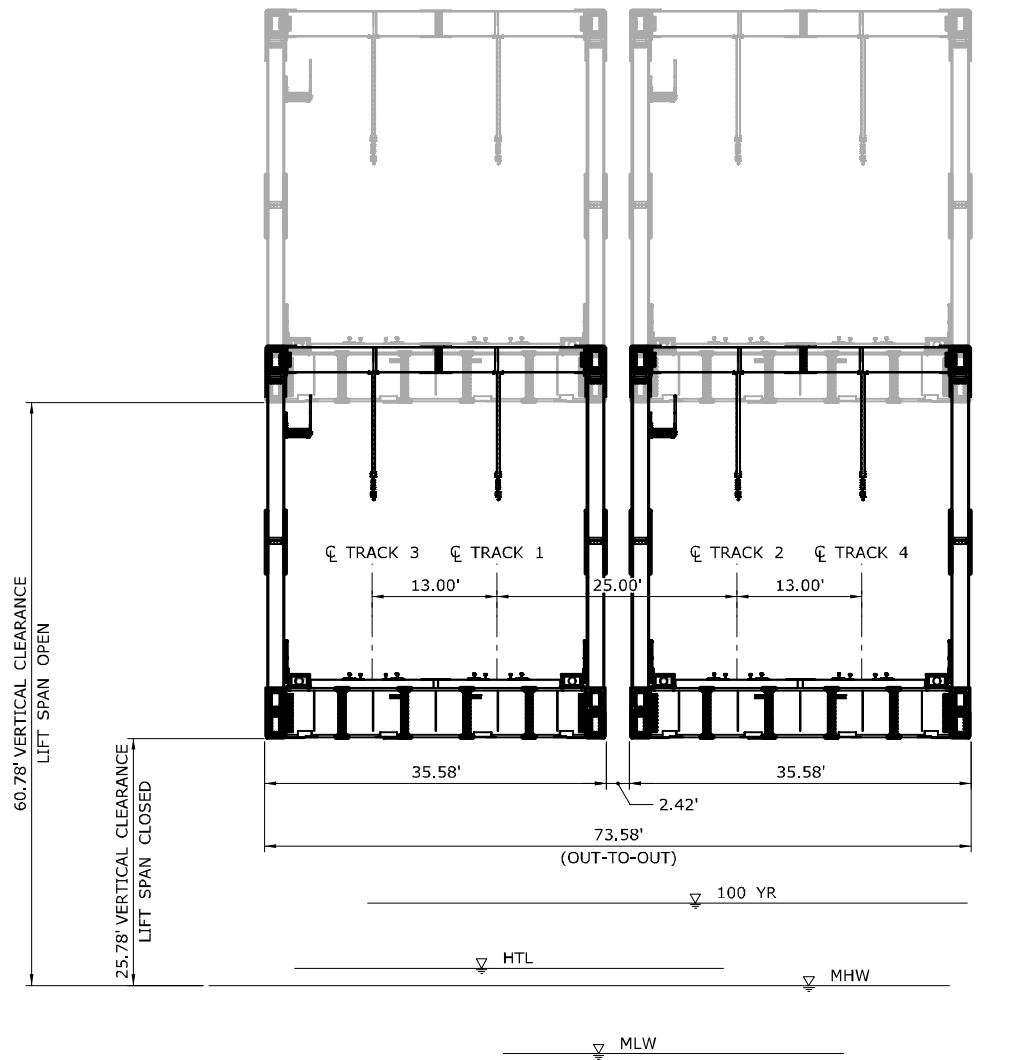
- XX/XX/XX MAP/BLOCK/LOT
- XX'/XX' APPROX. WATER DEPTH AT MLW/MHW
- [Hatched Box] DREDGING LIMITS

IN-WATER EARTHWORK QUANTITIES	
DESCRIPTION	VOLUME (CY)
CHANNEL DREDGING	5,310
EXCAVATION	11,480
FILL	12,070

ELEVATION TABLE		
DESCRIPTION	CONTOUR	ELEVATION (NAVD88)
100-YEAR FLOODPLAIN	100 YR	10.0/12.0
HIGH TIDE LINE	HTL	5.2
MEAN HIGH WATER LINE	MHW	3.35
MEAN LOW WATER LINE	MLW	-3.72
MEAN LOWER LOW WATER LINE	MLLW	-3.98

CONCEPTUAL PLANS UTILIZED TO OBTAIN COAST GUARD BRIDGE PERMIT

SCALE: SCALE 1" = 80'	DRAWN: T. ADINOLFI CHECKED: V. ROBBINS APPROVED: C. BROWN	SIGNATURE BLOCK: <small>HNTB CORPORATION 25 CORPORATE BLVD., 38TH FLOOR ROCKY HILL, CT 06067 TEL: (860) 527-9371</small>	 STATE OF CONNECTICUT DEPARTMENT OF TRANSPORTATION	PROJECT TITLE: WALK BRIDGE REPLACEMENT OVER THE NORWALK RIVER BRIDGE NO. 04288R NORWALK RIVER MILE 0.1	PROJECT LOCATION: NORWALK FAIRFIELD COUNTY, CT DRAWING TITLE: PROPOSED BRIDGE PLAN	PROJECT NO.: 0301-0176 DATE: REV 02-04-2022 DRAWING NO.: 2 OF 6
------------------------------	--	---	--	--	---	---

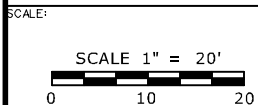


NOTES:

1. VERTICAL DATUM IS NAVD 88.
2. THIS VIEW IS REPRESENTATIVE OF A TYPICAL SECTION WITHIN THE NAVIGATION CHANNEL AT THE BRIDGE.

ELEVATION TABLE		
DESCRIPTION	CONTOUR	ELEVATION (NAVD88)
100-YEAR FLOODPLAIN	100 YR	10.0/12.0
HIGH TIDE LINE	HTL	5.2
MEAN HIGH WATER LINE	MHW	3.35
MEAN LOW WATER LINE	MLW	-3.72
MEAN LOWER LOW WATER LINE	MLLW	-3.98

CONCEPTUAL PLANS UTILIZED TO OBTAIN COAST GUARD BRIDGE PERMIT



DRAWN:
T. ADINOLFI

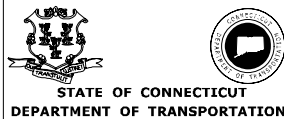
CHECKED:
V. ROBBINS

APPROVED:
C. BROWN

SIGNATURE BLOCK:

HNTB

HNTB CORPORATION
25 CORPORATE BLVD., 31TH FLOOR
ROCKY HILL, CT 06067
TEL: (860) 527-9272



PROJECT TITLE:

**WALK BRIDGE REPLACEMENT
OVER THE NORWALK RIVER
BRIDGE NO. 04288R
NORWALK RIVER MILE 0.1**

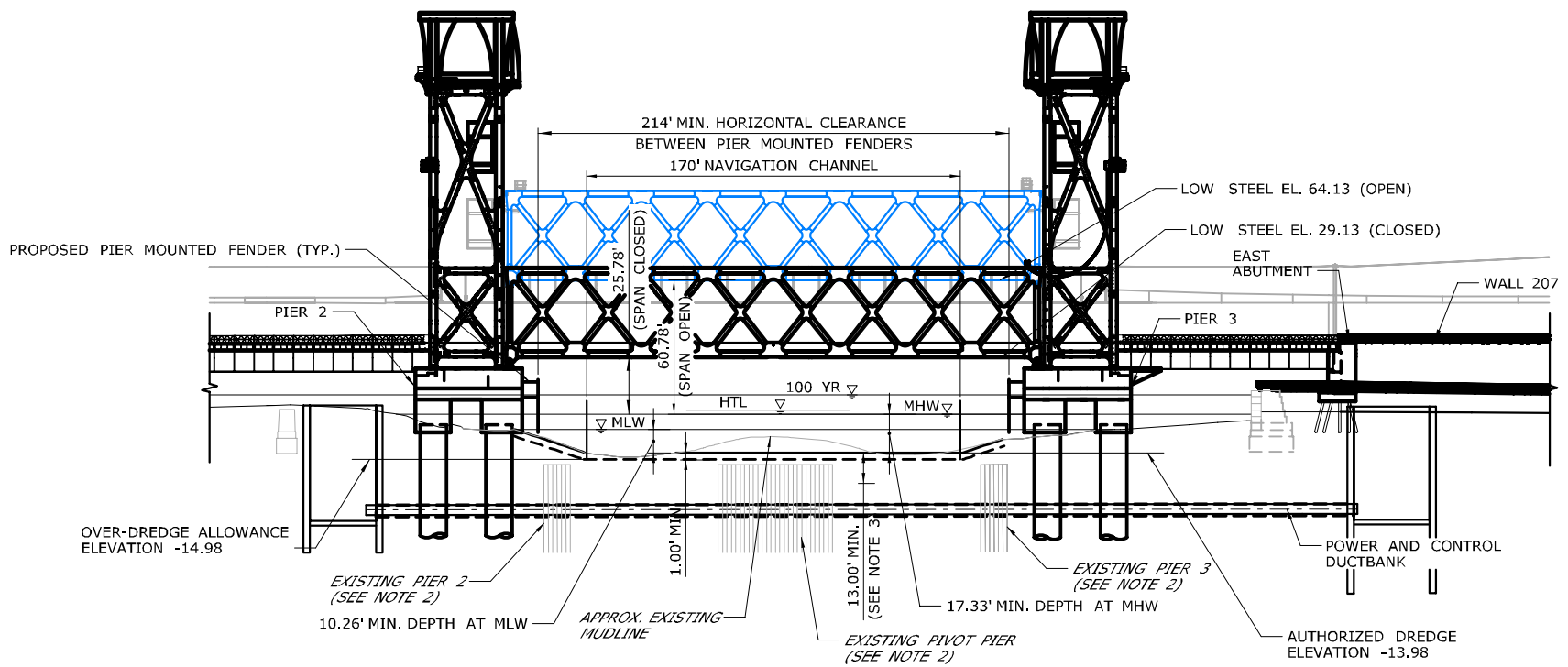
PROJECT LOCATION:
**NORWALK
FAIRFIELD COUNTY, CT**

DRAWING TITLE:
**PROPOSED BRIDGE
SECTION**

PROJECT NO.:
0301-0176

DATE:
REV 02-04-2022

DRAWING NO.:
3 OF 6



ELEVATION
(VIEW LOOKING NORTH)

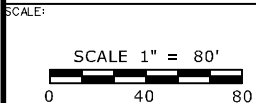
NOTES:

1. AUTHORIZED DREDGE ELEVATION FOR THE FEDERAL NAVIGATION CHANNEL IS 10 FEET BELOW MLLW (-13.98 NAVD88).
2. EXISTING SWING SPAN FOUNDATIONS SHALL BE REMOVED TO THE BOTTOM OF THE TIMBER MAT (APPROXIMATELY EL -20), PER COORDINATION WITH THE UNITED STATES ARMY CORPS OF ENGINEERS.
3. POWER AND CONTROL DUCTBANK WILL BE INSTALLED TO MAINTAIN A CONSTANT ELEVATION ACROSS THE NAVIGATION CHANNEL. MINIMUM DEPTH SHOWN IS MEASURED TO THE TOP OF THE DUCTBANK AND IS SUBJECT TO APPROVAL BY THE U.S. ARMY CORPS OF ENGINEERS.
4. VERTICAL CLEARANCE IN THE CLOSED POSITION REPRESENTS AN INCREASE OF AT LEAST 9 FEET FROM THE EXISTING CONDITION. VERTICAL CLEARANCE IN THE OPEN POSITION IS CONSISTENT WITH THE VERTICAL CLEARANCE PROVIDED BY THE I-95 OVERPASS UPSTREAM OF THE PROJECT LOCATION.
5. VERTICAL DATUM IS NAVD 88.

IN-WATER EARTHWORK QUANTITIES	
DESCRIPTION	VOLUME (CY)
CHANNEL DREDGING	5,310
EXCAVATION	11,480
FILL	12,070

ELEVATION TABLE		
DESCRIPTION	CONTOUR	ELEVATION (NAVD88)
100-YEAR FLOODPLAIN	100 YR	10.0/12.0
HIGH TIDE LINE	HTL	5.2
MEAN HIGH WATER LINE	MHW	3.35
MEAN LOW WATER LINE	MLW	-3.72
MEAN LOWER LOW WATER LINE	MLLW	-3.98

CONCEPTUAL PLANS UTILIZED TO OBTAIN COAST GUARD BRIDGE PERMIT



DRAWN:
T. ADINOLFI

CHECKED:
V. ROBBINS

APPROVED:
C. BROWN

SIGNATURE BLOCK:

HNTB

HNTB CORPORATION
25 CORPORATE BLVD., 18TH FLOOR
ROCKY HILL, CT 06067
TEL: 860-527-9377



PROJECT TITLE:

**WALK BRIDGE REPLACEMENT
OVER THE NORWALK RIVER
BRIDGE NO. 04288R
NORWALK RIVER MILE 0.1**

PROJECT LOCATION:
**NORWALK
FAIRFIELD COUNTY, CT**

DRAWING TITLE:
**PROPOSED BRIDGE
ELEVATION**

PROJECT NO.:

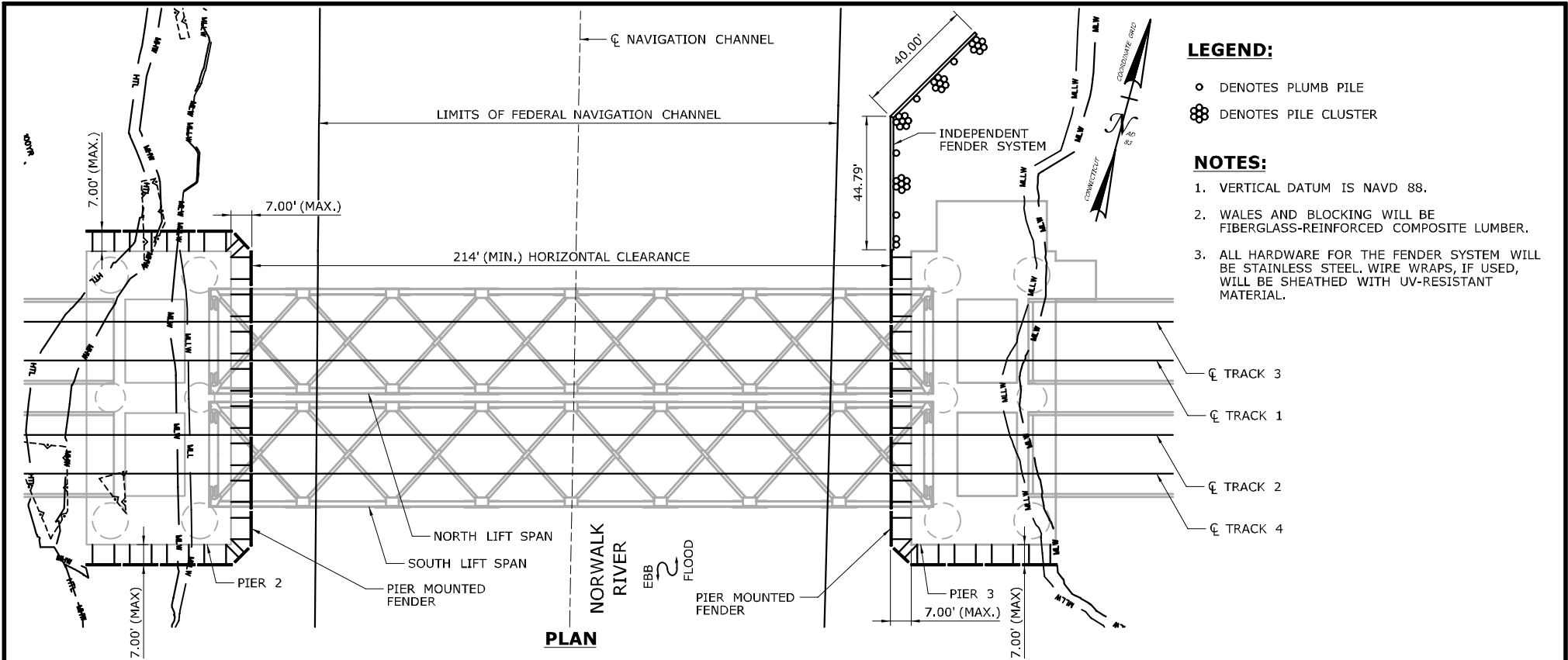
0301-0176

DATE:

REV 02-04-2022

DRAWING NO.:

4 OF 6

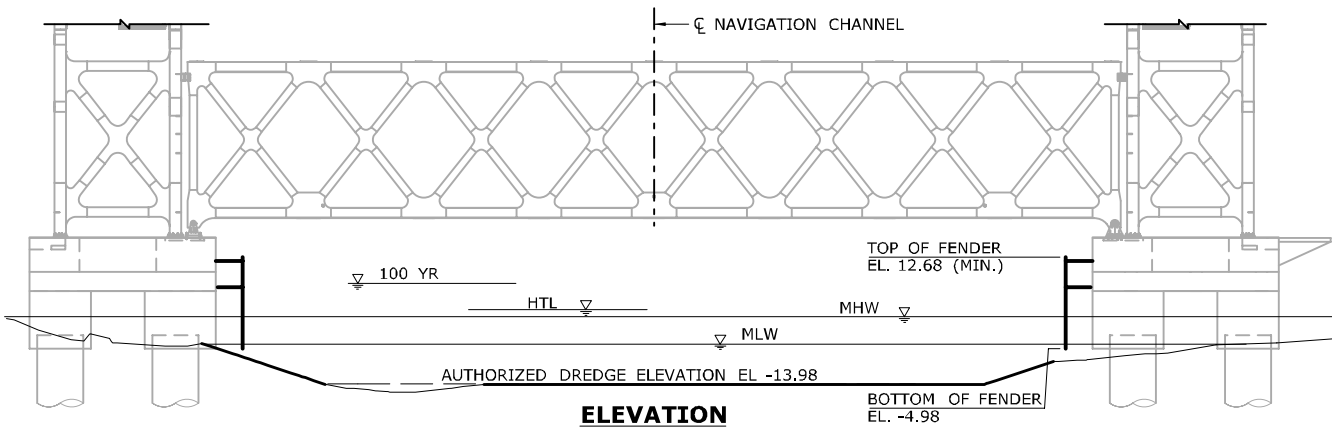


LEGEND:

- DENOTES PLUMB PILE
- ⊗ DENOTES PILE CLUSTER

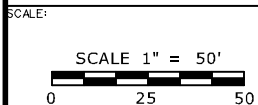
NOTES:

1. VERTICAL DATUM IS NAVD 88.
2. WALES AND BLOCKING WILL BE FIBERGLASS-REINFORCED COMPOSITE LUMBER.
3. ALL HARDWARE FOR THE FENDER SYSTEM WILL BE STAINLESS STEEL. WIRE WRAPS, IF USED, WILL BE SHEATHED WITH UV-RESISTANT MATERIAL.



ELEVATION TABLE		
DESCRIPTION	CONTOUR	ELEVATION (NAVD88)
100-YEAR FLOODPLAIN	100 YR	10.0/12.0
HIGH TIDE LINE	HTL	5.2
MEAN HIGH WATER LINE	MHW	3.35
MEAN LOW WATER LINE	MLW	-3.72
MEAN LOWER LOW WATER LINE	MLLW	-3.98

CONCEPTUAL PLANS UTILIZED TO OBTAIN COAST GUARD BRIDGE PERMIT



DRAWN:
T. ADINOLFI
CHECKED:
V. ROBBINS
APPROVED:
C. BROWN

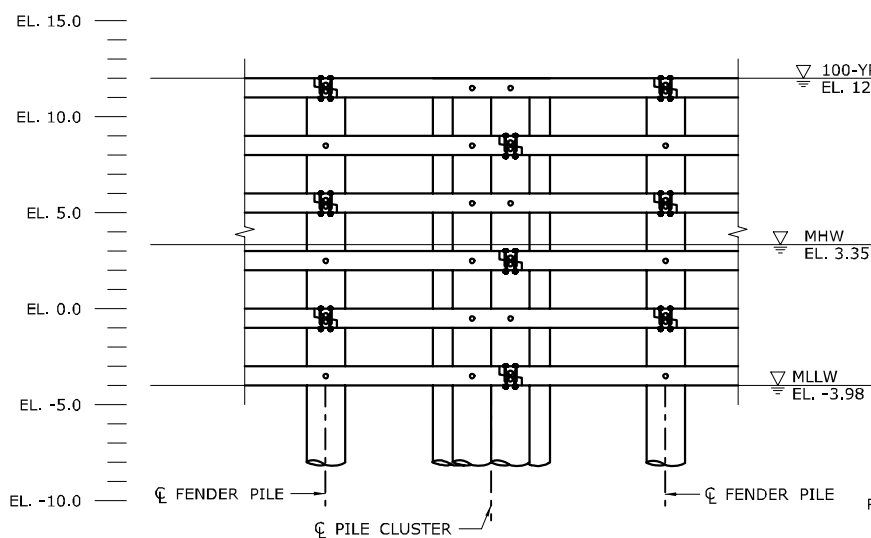
SIGNATURE BLOCK:
HNTB
HNTB CORPORATION
25 CORPORATE BLVD., 31TH FLOOR
ROCKY HILL, CT 06067
TEL: 860-527-9377

STATE OF CONNECTICUT
DEPARTMENT OF TRANSPORTATION

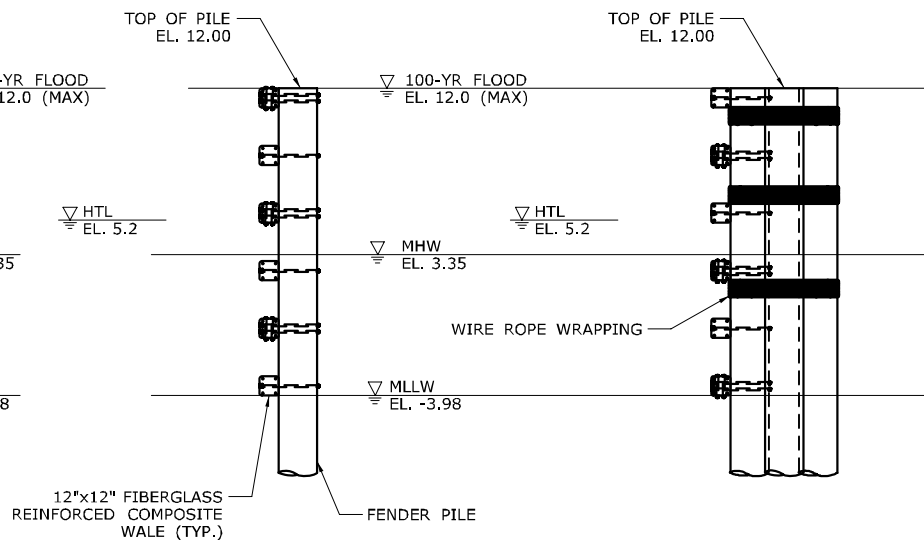
PROJECT TITLE:
**WALK BRIDGE REPLACEMENT
OVER THE NORWALK RIVER
BRIDGE NO. 04288R
NORWALK RIVER MILE 0.1**

PROJECT LOCATION:
**NORWALK
FAIRFIELD COUNTY, CT**
DRAWING TITLE:
**PROPOSED FENDER
SYSTEM**

PROJECT NO.:
0301-0176
DATE:
REV 02-04-2022
DRAWING NO.:
5 OF 6



TYPICAL INDEPENDENT FENDER SYSTEM ELEVATION



TYPICAL SECTION

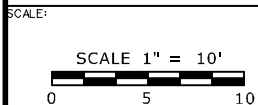
TYPICAL PILE CLUSTER ELEVATION

NOTES:

1. VERTICAL DATUM IS NAVD 88.
2. NAVIGATION LIGHTS WILL BE USED TO DEFINE THE LIMITS OF THE FEDERAL NAVIGATION CHANNEL.

ELEVATION TABLE		
DESCRIPTION	CONTOUR	ELEVATION (NAVD88)
100-YEAR FLOODPLAIN	100 YR	10.0/12.0
HIGH TIDE LINE	HTL	5.2
MEAN HIGH WATER LINE	MHW	3.35
MEAN LOW WATER LINE	MLW	-3.72
MEAN LOWER LOW WATER LINE	MLLW	-3.98

CONCEPTUAL PLANS UTILIZED TO OBTAIN COAST GUARD BRIDGE PERMIT



DRAWN:
T. ADINOLFI

CHECKED:
V. ROBBINS

APPROVED:
C. BROWN

SIGNATURE BLOCK:

HNTB

HNTB CORPORATION
25 CORPORATE BLVD., 30TH FLOOR
ROCKY HILL, CT 06067
TEL: (860) 527-9377



PROJECT TITLE:
**WALK BRIDGE REPLACEMENT
OVER THE NORWALK RIVER
BRIDGE NO. 04288R
NORWALK RIVER MILE 0.1**

PROJECT LOCATION:
**NORWALK
FAIRFIELD COUNTY, CT**

DRAWING TITLE:
**PROPOSED FENDER
SYSTEM DETAILS**

PROJECT NO.:
0301-0176

DATE:
REV 02-04-2022

DRAWING NO.:
6 OF 6