

Connecticut Department of Energy & Environmental Protection
Structures, Dredging & Fill, and Tidal Wetlands and 401 Water Quality Certificate

Attachment J – Site Photographs

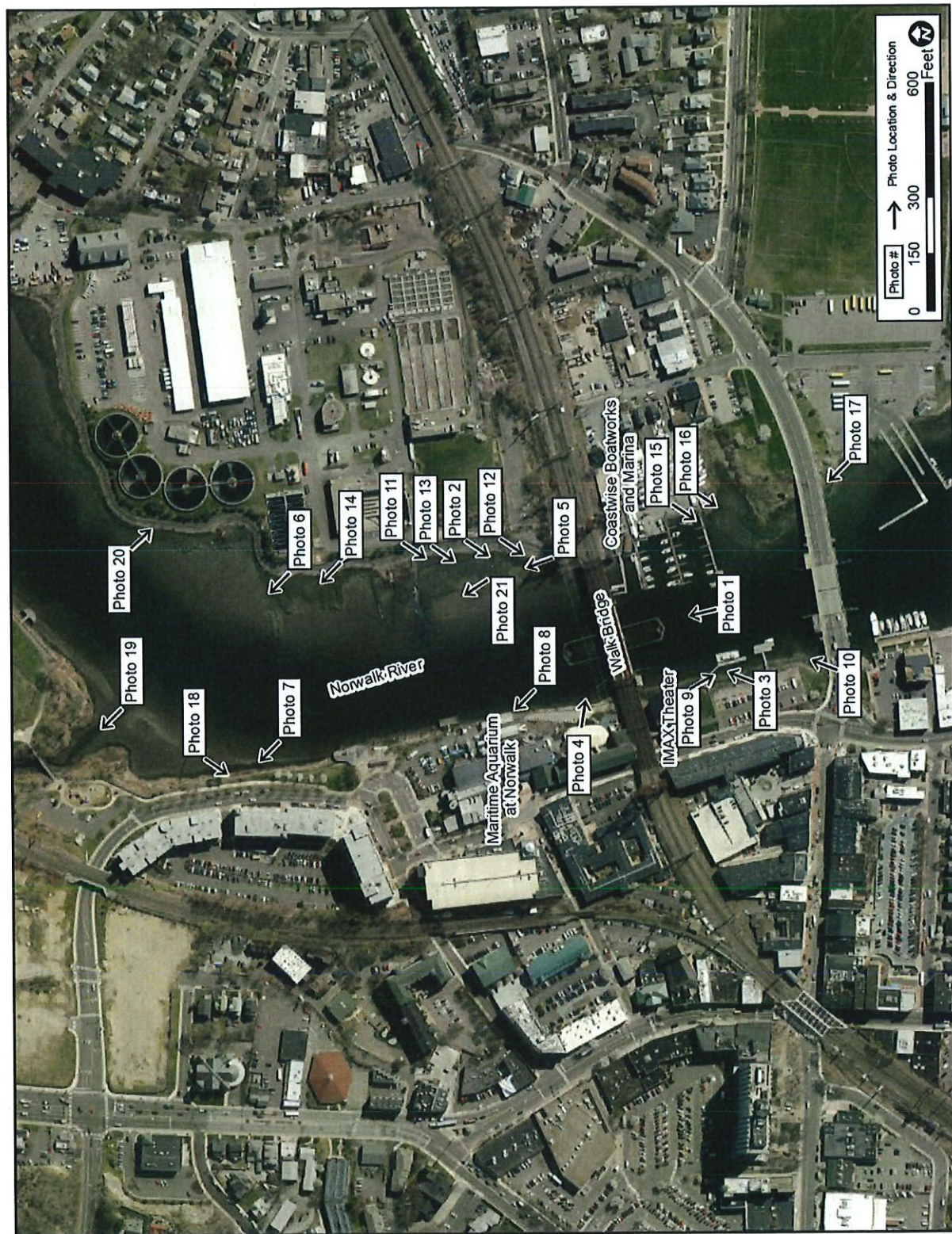




Photo 1 – View of the downstream side of Walk Bridge looking north.

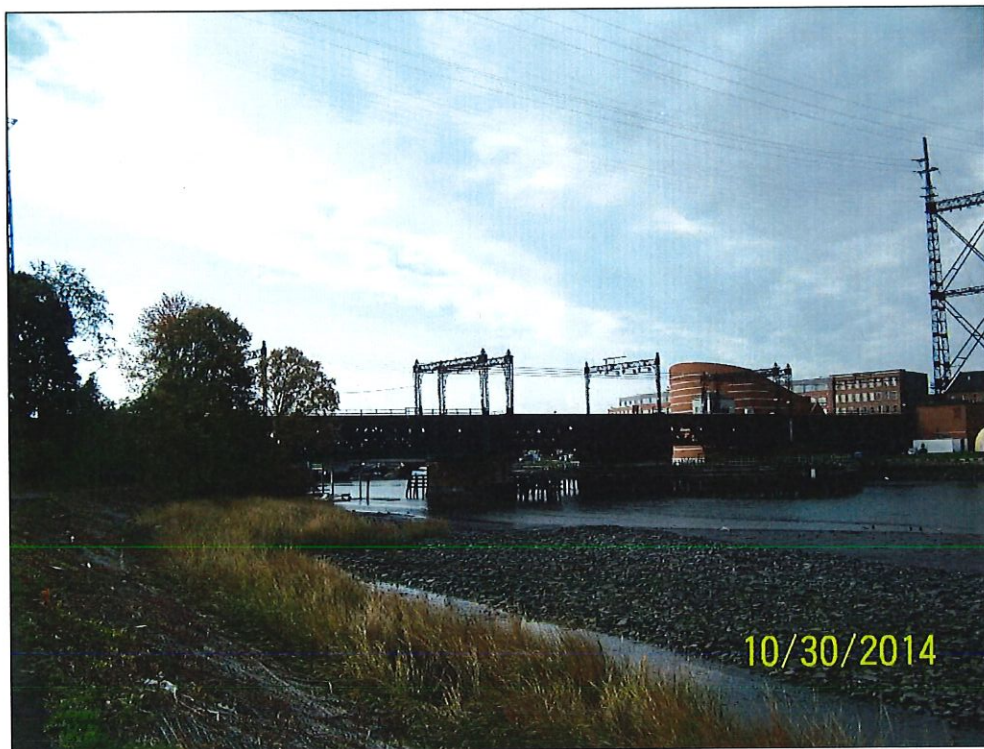


Photo 2 – View of the upstream side of Walk Bridge looking southwest.



Photo 3 – View of the downstream side of Walk Bridge looking Northeast.



Photo 4 - View of the upstream side of Walk Bridge looking east.



Photo 5 – View north showing area of discarded riprap to be restored to a mudflat transition to tidal marsh as part of mitigation efforts.



Photo 6 – View northwest showing area of invasive Phragmites to be restored into tidal marsh as part of mitigation efforts.



Photo 7 – View of Oyster Shell Park (looking north).



Photo 8 – View of wetlands in Northwest Quadrant (looking north).



Photo 9 – View of Route 136 Bridge (looking south).

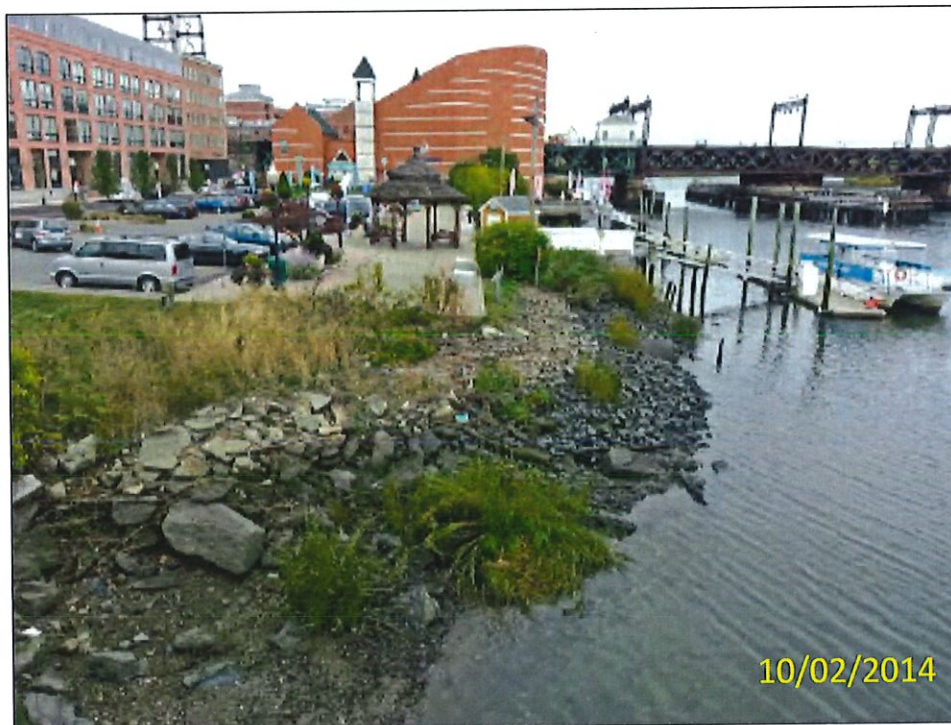


Photo 10 – View of Route 136 Bridge (looking north).



Photo 11 -View across riprap intertidal flat (looking south).



Photo 12 – View of wetlands in Northeast Quadrant (looking south).



Photo 13 – View of woody vegetation removed from the slope (looking south).

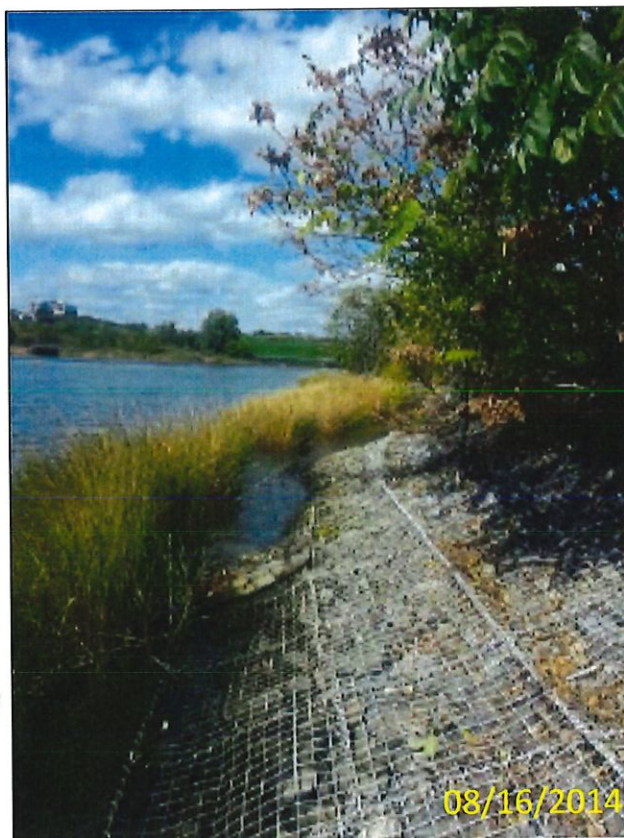


Photo 14 – Gabion slope along Norwalk River (looking north).



Photo 15 – View of wetlands in Southeast Quadrant from marina (looking south).

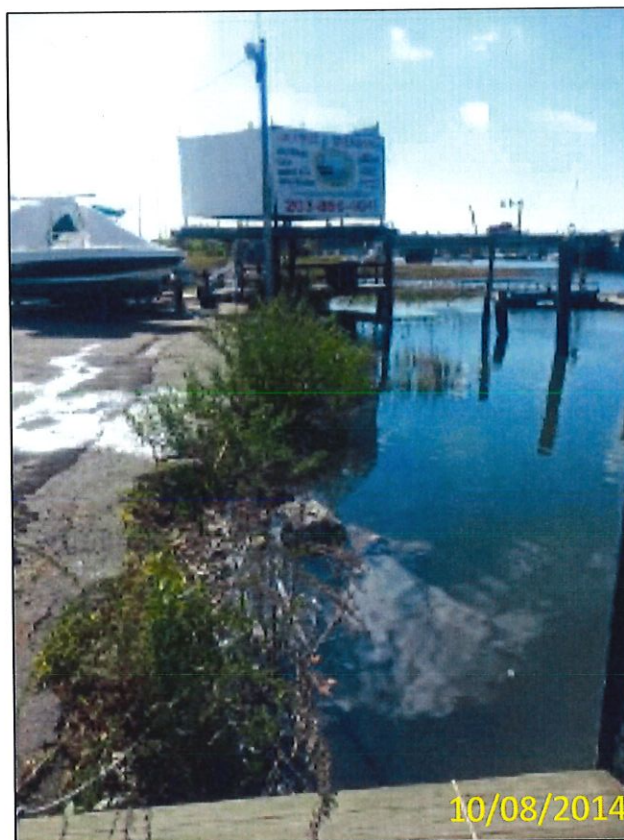


Photo 16 – View of vegetation fringe in Southeast Quadrant (looking south).

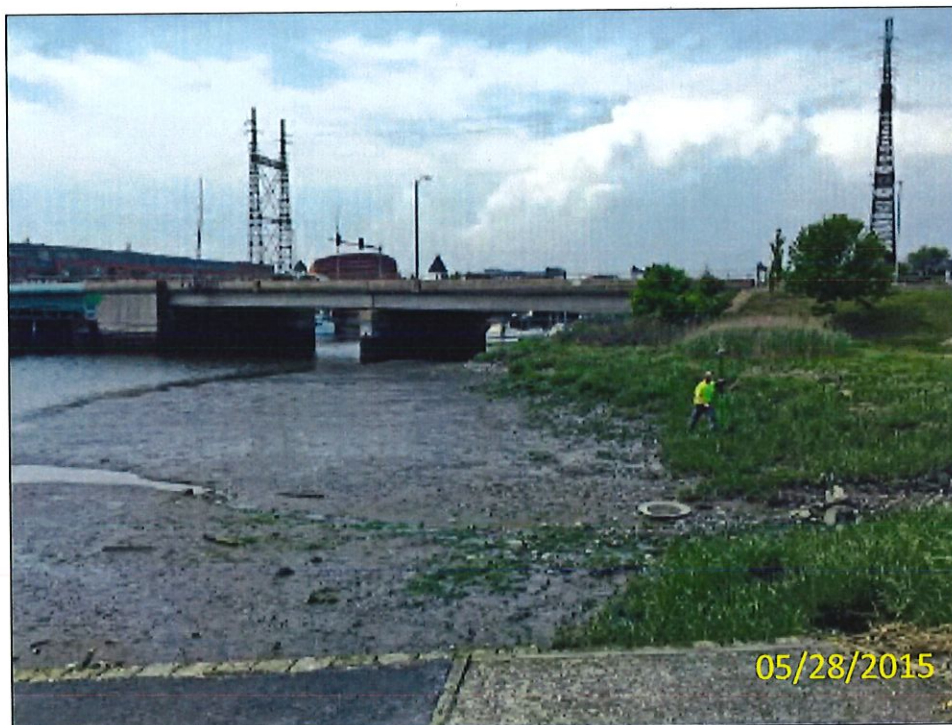


Photo 17 – View of wetlands in Southeast Quadrant from boat ramp (looking north).



Photo 18 – View of wetlands in Northwest Quadrant (looking southwest).



Photo 19 – View of Oyster Shell Park, right of the tidal channel (looking northwest).



Photo 20 – View from northeast of Wetland Mitigation Area 3.

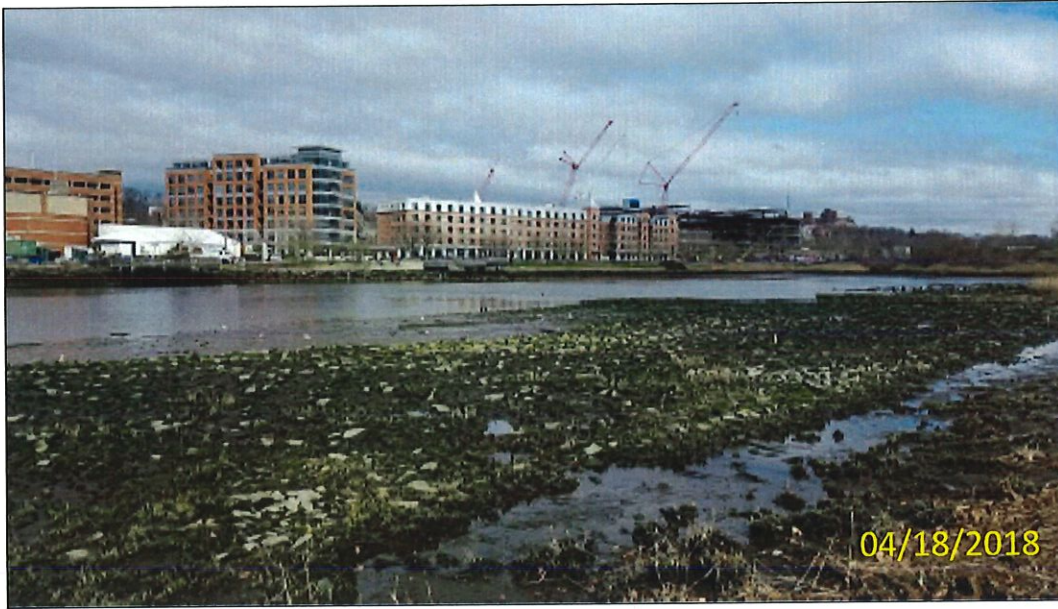


Photo 21 – View of the riprap restoration area (looking northwest).