

Walk Bridge Program

Advance Utilities Project, East Avenue

December 10, 2020



Housekeeping Items

- ☐ Meeting materials are available at: walkbridgect.com.
- ☐ The presentation is being recorded.
- ☐ Please mute your phone during the presentation.
- ☐ Please hold questions until after the presentation.



Meet Your Speakers

- John Hanifin, CTDOT
- Rich Bertoli, WSP



Federal Transit
Administration

Meeting Agenda

1. The Need for the Advance Utility Project
2. Project Schedule, Duration, Limits
3. Roadway
4. Pedestrians and Cyclists
5. Public Outreach
6. Questions



An aerial photograph of a city, likely St. Louis, featuring a river, a bridge, and several large power line towers. The image is heavily filtered with a dark blue color, making the details somewhat muted. The text "Project Need" is centered in white.

Project Need

Project Need



TWO SECTIONS



REDUCE DELAY TO EAST AVENUE BRIDGE
REPLACEMENT AND ROADWAY LOWERING



REMOVE OVERHEAD WIRE AND POLES

Project Need



City of Norwalk

CTDOT



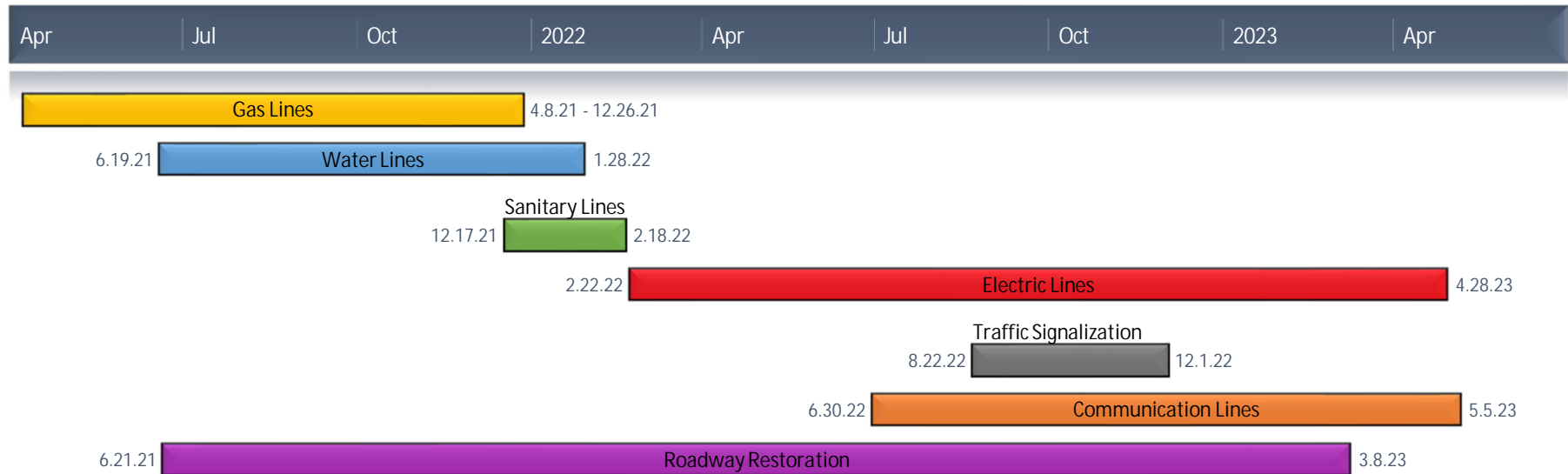
An aerial photograph of a city, likely St. Louis, showing the Mississippi River, the Gateway Arch, and several large power transmission towers. The image is heavily filtered with a dark blue color, making the details somewhat muted. The text 'Project Schedule and Duration' is centered over the image in a white, bold, sans-serif font.

Project Schedule and Duration

Project Schedule and Duration



2021



2023

ANTICIPATED START SPRING 2021
CONSTRUCTION DURATION 2 YEARS

An aerial photograph of a city landscape, featuring a river, industrial buildings, and several large electrical transmission towers. The image is covered with a semi-transparent dark blue overlay. The word "Roadway" is centered in white text.

Roadway

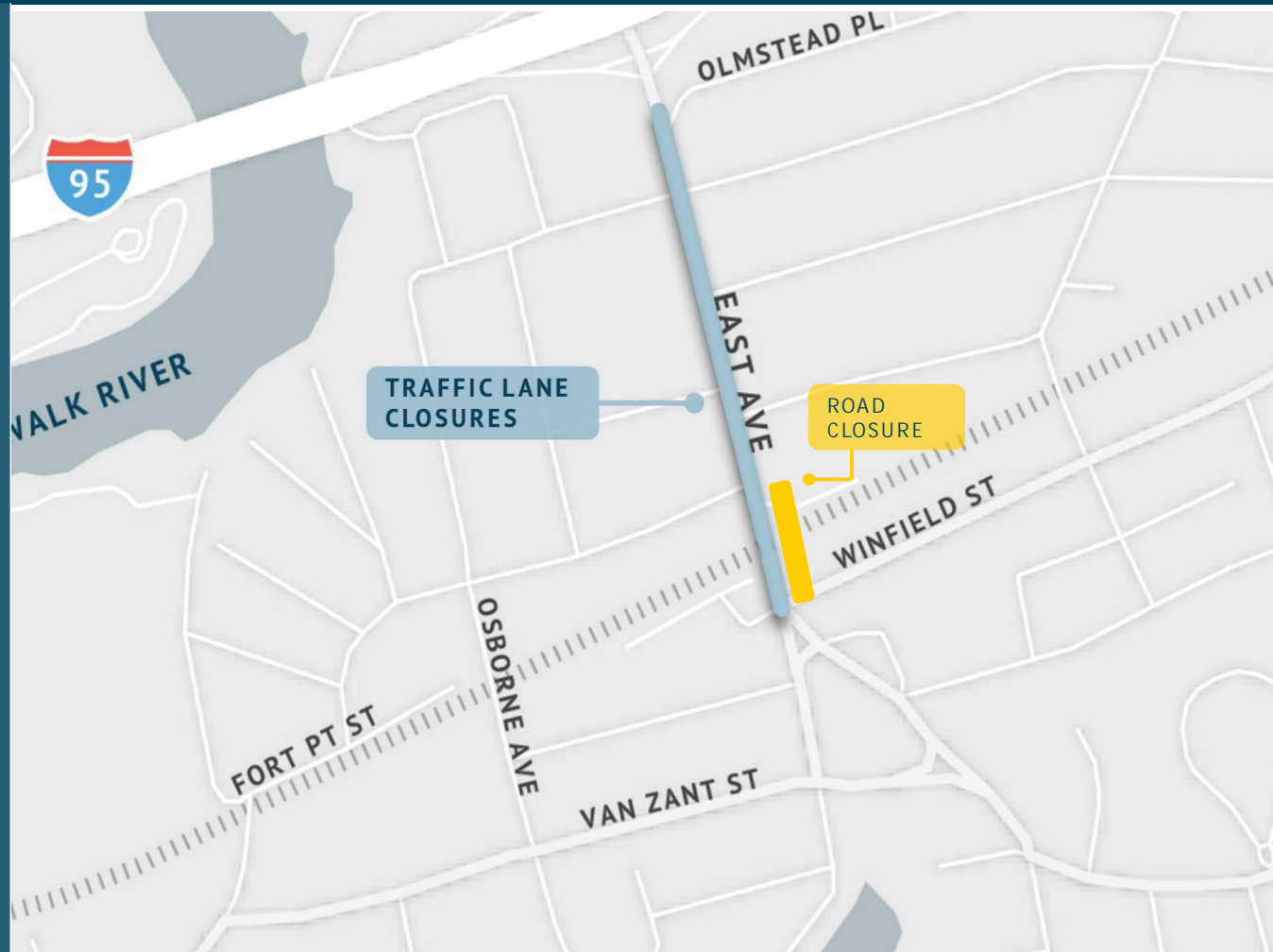
East Avenue Traffic



Traffic Lane Closures

- Midday 9:00 am to 3:30 pm
- Nightly 8:00 pm to 6:00 am

Maintaining Two Travel Lanes One in Each Direction

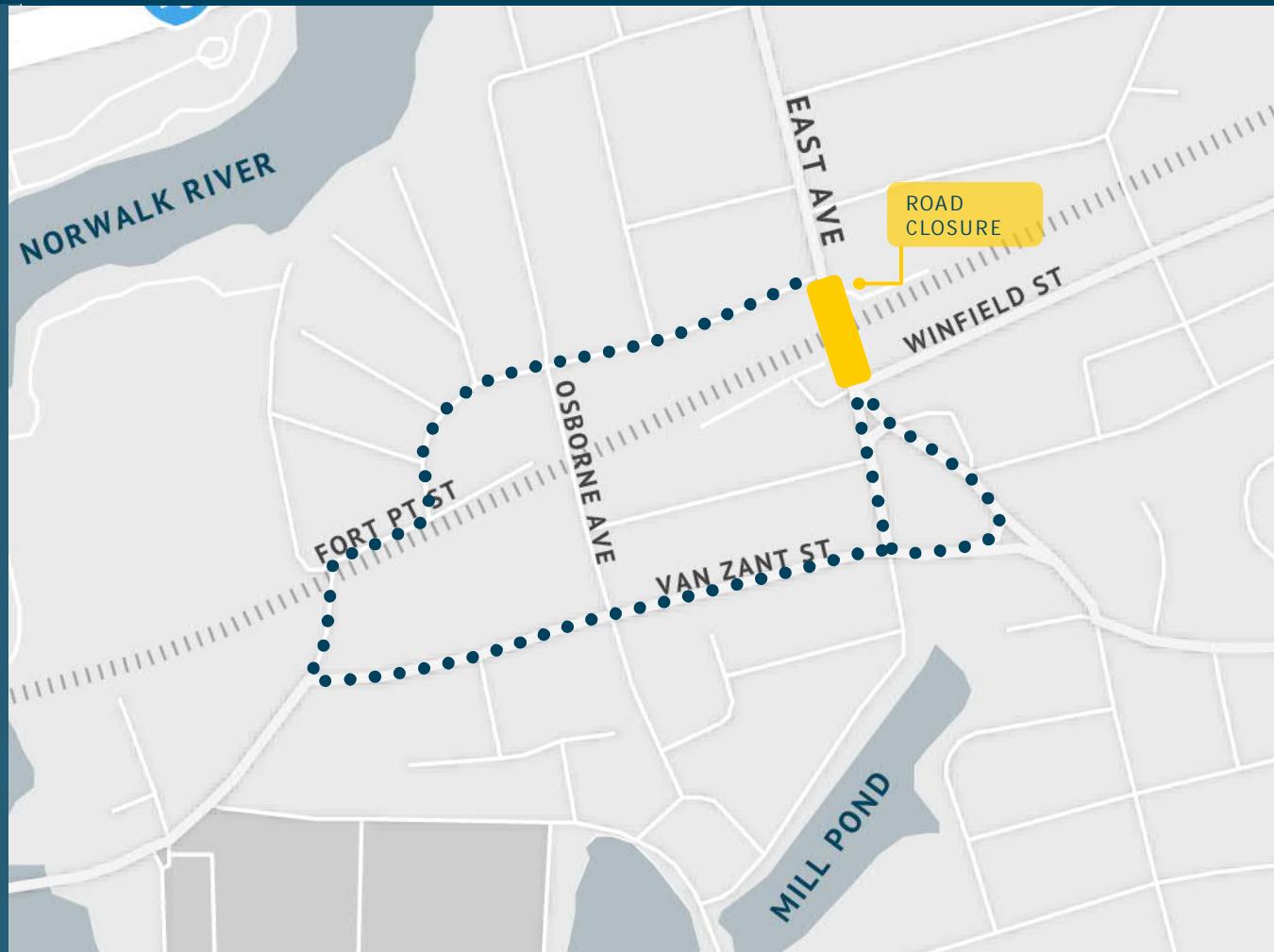


East Avenue Detour



East Ave from Fort Point St to Winfield St

- No weekend closures during July and August
- No closures during major planned local events
- 90 nightly closures over 2 years
 - 8:00pm to 6:00am
- 12 weekend closures over 2 years
 - 8:00pm Friday to 6:00am Monday



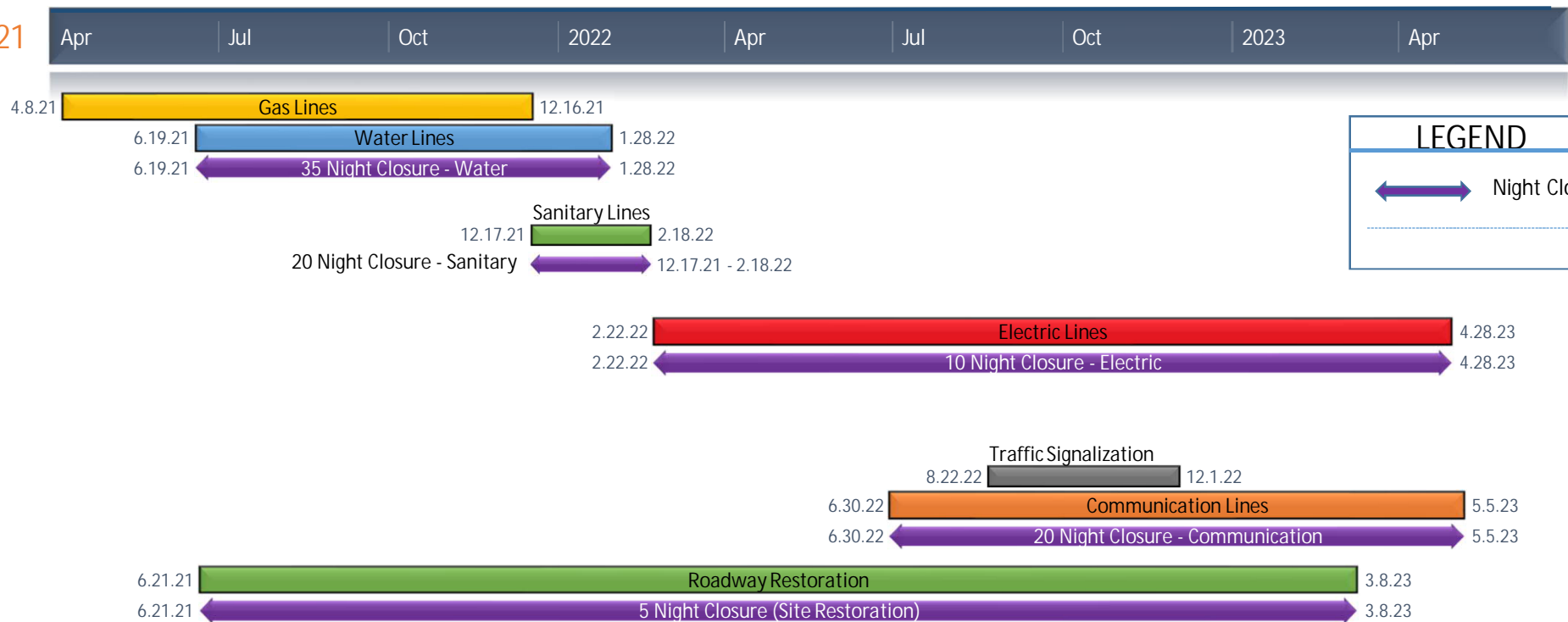
Roadway Closures



ANTICIPATED CLOSURE SCHEDULE (SUBJECT TO CHANGE BASED ON START OF CONSTRUCTION AND COORDINATION WITH PRIVATE UTILITIES)

2021

2023



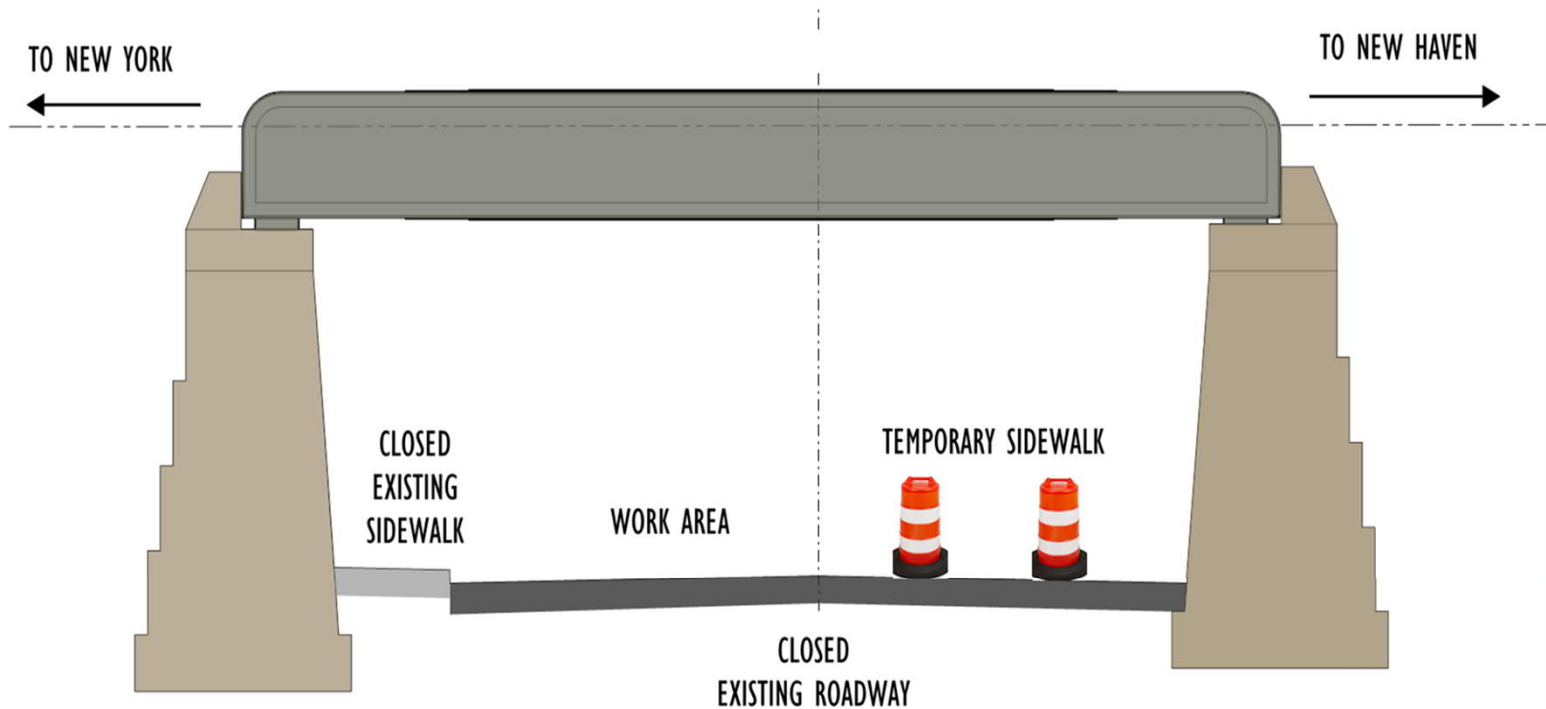
LEGEND

↔ Night Closure

An aerial photograph of a city, likely New York City, showing a river (the Hudson River) and several large power line towers. The image is heavily filtered with a dark blue color, making the details somewhat muted. The text "Pedestrians and Cyclists" is centered over the image in a white, bold, sans-serif font.

Pedestrians and Cyclists

Pedestrians and Cyclists - Status Quo



Pedestrians
and Cyclists
- Status Quo

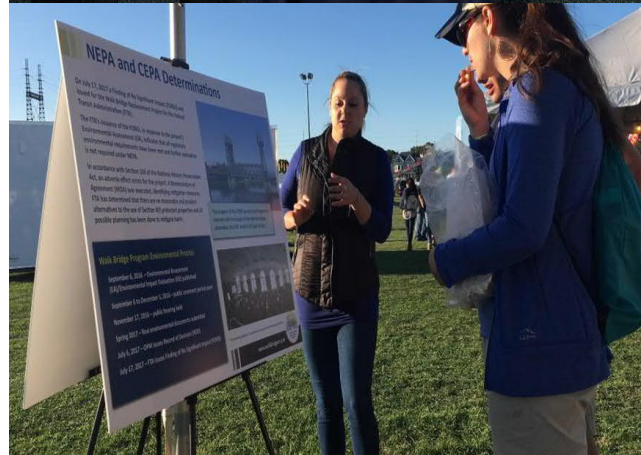
An aerial photograph of a city, likely St. Louis, featuring a large river (the Mississippi) and several high-voltage power transmission towers. The image is heavily filtered with a dark blue color, making the details of the city and the landscape appear muted. The text "Public Outreach" is centered in the middle of the image in a white, bold, sans-serif font.

Public Outreach

Public Outreach and Coordination



- ✓ Welcome Center
- ✓ 24/7 hotline
- ✓ Community Meetings
- ✓ Website
- ✓ Construction Bulletin
- ✓ Targeted Outreach Notices
- ✓ Business Coordination
- ✓ Social Media
- ✓ E-Blasts



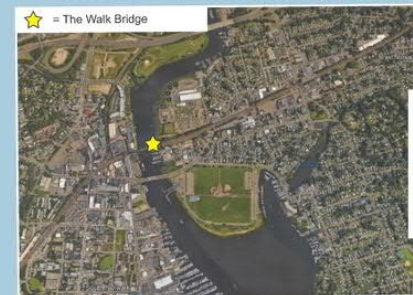
Let's Talk the Walk



ONLINE
SURVEY

If you are a business owner, or manager, in the vicinity of the Walk Bridge Program, we want to hear **from you** about **your business**.

Please complete the Business Coordination Survey at:
www.surveymonkey.com/r/WalkBridgeSurvey



More information can be found at: www.walkbridge.com

An aerial photograph of a city, likely New York City, showing a river (the Hudson River) and several large power line towers. The image is overlaid with a dark blue filter. The word "Questions" is written in white, bold, sans-serif font in the center of the image.

Questions