



---

## BRIDGE PERMIT

17 MAY 2023

(2-23-1)

---

**WHEREAS** by Title V of an act of Congress approved August 2, 1946, entitled "General Bridge Act of 1946," as amended (33 U.S.C. §§ 525-533), the consent of Congress was granted for the construction, maintenance and operation of bridges and approaches thereto over the navigable waters of the United States;

**AND WHEREAS** the Secretary of Homeland Security has delegated the authority of Section 502(b) of that act to the Commandant, U.S. Coast Guard by Department of Homeland Security Delegation Number: 0170.1;

**AND WHEREAS** before construction is commenced, the Commandant must approve the location and plans of any such bridge and may impose any specific conditions relating to the construction, maintenance and operation of the structure deemed necessary in the interest of public navigation, such conditions to have the force of law;

**AND WHEREAS** the - STATE OF CONNECTICUT - has submitted for approval the location and plans indicating a design-build concept of a bridge to be constructed across the Norwalk River at Norwalk, Connecticut;

**NOW THEREFORE**, This is to certify that the location and plans dated 7 February 2022 are hereby approved by the Commandant, subject to the following conditions:

1. No deviation from the approved plans may be made either before or after completion of the structure unless the modification of said plans has previously been submitted to and received the approval of the Commandant.

2. The construction of falsework, pilings, cofferdams or other obstructions, if required, shall be in accordance with plans submitted to and approved by the Commander, First Coast Guard District, prior to construction of the bridge. All work shall be so conducted that the free navigation of the waterway is not unreasonably interfered with and the present navigable depths are not impaired. Timely notice of any and all events that may affect navigation shall be given to the District Commander during construction of the bridge. The channel or channels through the structure shall be promptly cleared of all obstructions placed therein or caused by the construction of the bridge to the satisfaction of the District Commander, when in the judgment of the District Commander the construction work has reached a point where such action should be taken.

3. Issuance of this permit does not relieve the permittee of the obligation or responsibility for compliance with the provisions of any other law or regulation as may be under the jurisdiction of the State of Connecticut, Department of

Energy and Environmental Protection or any other Federal, state or local authority having cognizance of any aspect of the location, construction or maintenance of said bridge.

4. Prior to commencement of construction, the permittee shall submit to the District Commander for approval, plans showing the final design chosen for the construction of the bridge. The final design chosen shall, at a minimum, provide the navigational clearances as shown on the approved plan sheet 4 (of 6) dated 7 February 2022.

5. The bridge protective system shall be constructed and maintained as shown on the approved plan sheets 2, 4, 5 and 6 (of 6) dated 7 February 2022 for the safety of navigation.

6. Clearance gauges shall be installed and maintained in a good and legible condition by and at the expense of the owner of the bridge. The type of gauges and the locations in which they are to be installed will be submitted to the District Commander for approval.

7. All parts of the existing to-be-replaced Walk Bridge across the Norwalk River, mile 0.1, not utilized in the new bridge, which are located within the waterway shall be removed down to or below the bottom of the timber mat (approximately elevation -20.0 feet, Mean Sea Level). All other parts shall be removed to a minimum of two feet below the natural ground line. The waterway shall be cleared to the satisfaction of the District Commander when in the judgment of the District Commander such action should be taken.

8. When the proposed bridge is no longer used for transportation purposes, it shall be removed in its entirety or to an elevation deemed appropriate by the District Commander and the waterway cleared to the satisfaction of the District Commander. Such removal and clearance shall be completed by and at the expense of the owner of the bridge upon due notice from the District Commander.

9. The approval hereby granted shall cease and be null and void unless construction of the bridge is commenced within five years and completed within eight years after the date of this permit.

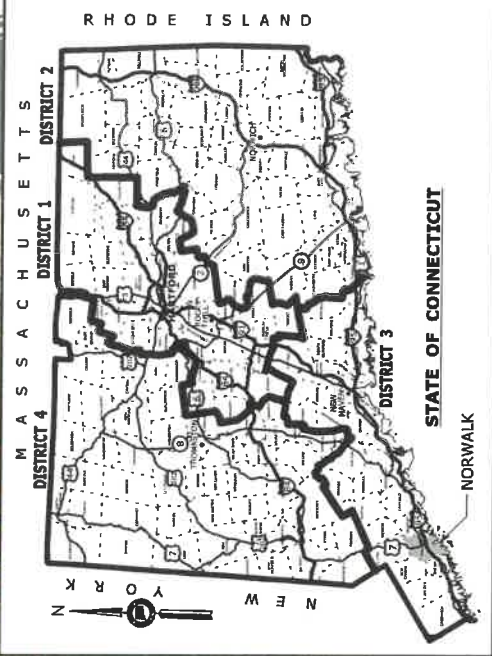
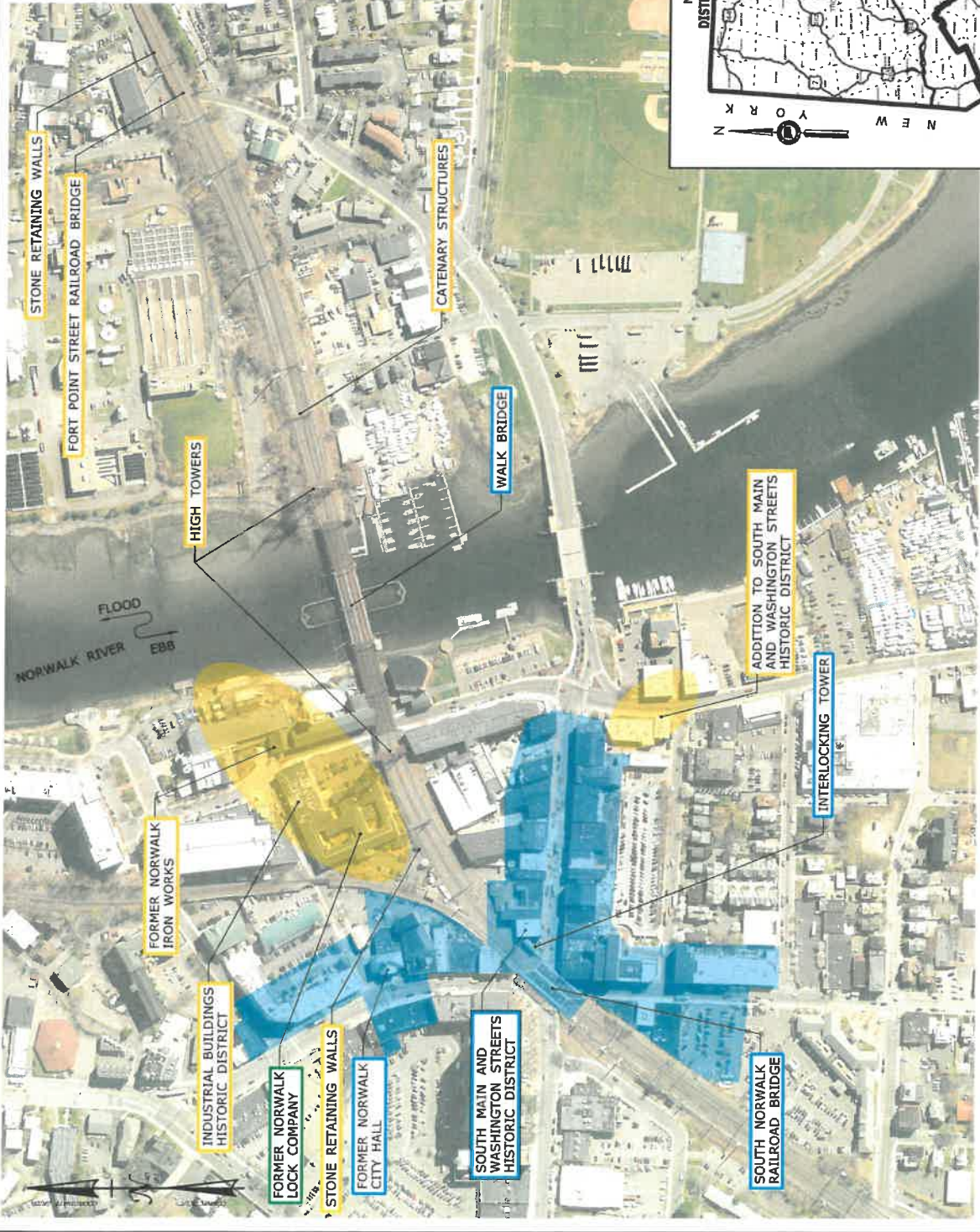


Brian L. Dunn  
Chief, Office of Bridge Programs  
U.S. Coast Guard  
By direction of the Commandant



**LEGEND:**

- NATIONAL REGISTER OF HISTORIC PLACES (NRHP) - LISTED RESOURCE
- NRHP - ELIGIBLE RESOURCE
- NRHP - POTENTIALLY ELIGIBLE RESOURCE PER PROJECT FONSI 2017
- NRHP - LISTED HISTORIC DISTRICT
- NRHP - POTENTIALLY ELIGIBLE HISTORIC DISTRICT PER PROJECT FONSI 2017

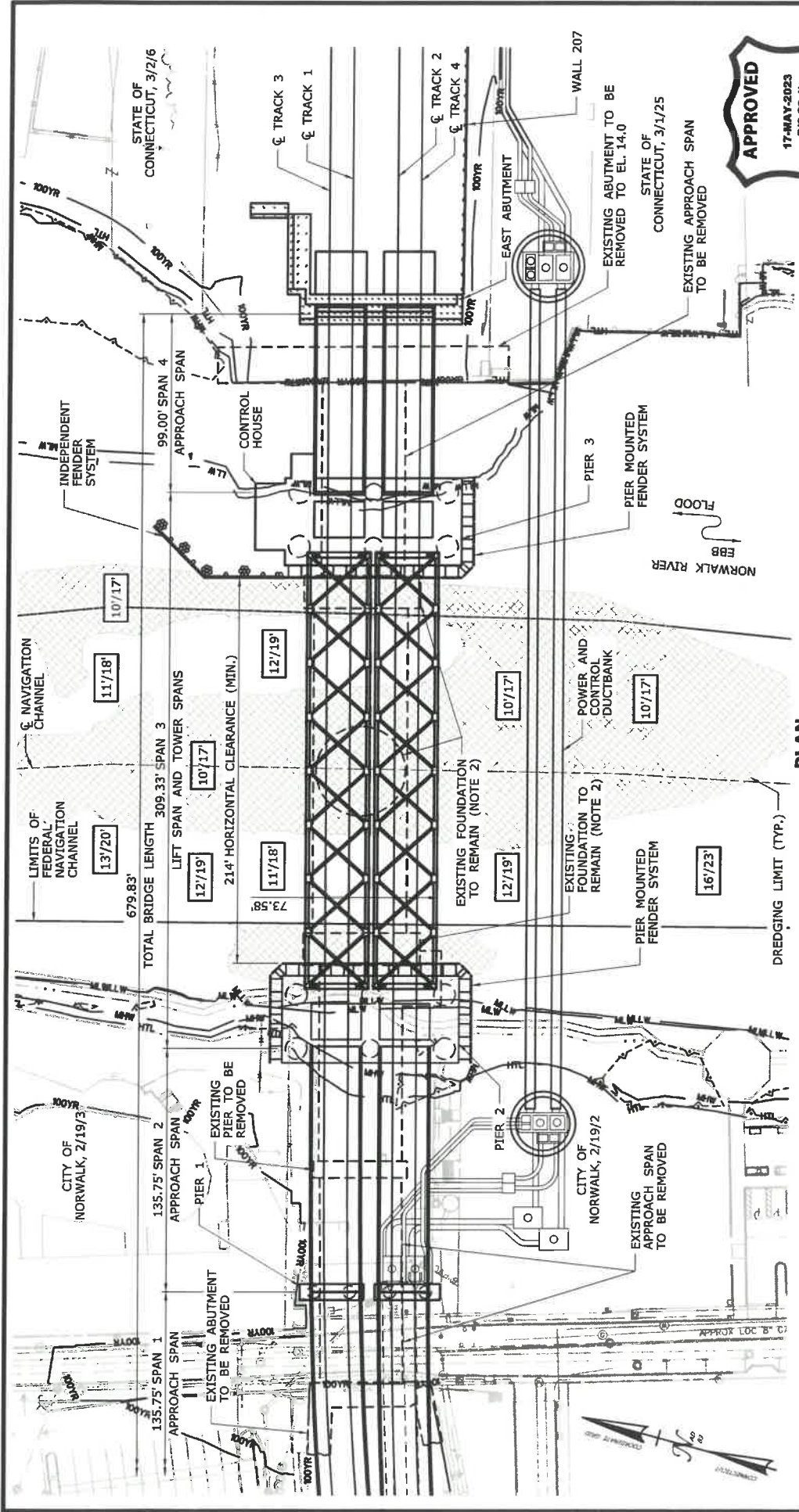


**PLAN**

NOTE: CATENARY STRUCTURES ARE LOCATED APPROXIMATELY EVERY 200 FEET ALONG THE RAILROAD LINE

<p>SCALE:</p> <p>SCALE 1" = 400'</p>	<p>DRAWN: T. ADINOLFI</p> <p>CHECKED: V. ROBBINS</p> <p>APPROVED: C. BROWN</p>	<p>SIGNATURE BLOCK:</p> <p><b>HNTB</b> HNTB Corporation Engineers, Architects, Planners and Environmental Scientists</p>	<p>STATE OF CONNECTICUT DEPARTMENT OF TRANSPORTATION</p>	<p>PROJECT TITLE: <b>WALK BRIDGE REPLACEMENT OVER THE NORWALK RIVER BRIDGE NO. 04288R NORWALK RIVER MILE 0.1</b></p> <p>PROJECT LOCATION: <b>NORWALK FAIRFIELD COUNTY, CT</b></p> <p>DRAWING TITLE: <b>LOCATION VICINITY HISTORIC RESOURCES MAP</b></p> <p>PROJECT NO.: <b>0301-0176</b></p> <p>DATE: <b>02-07-2022</b></p> <p>DRAWING NO.: <b>1 OF 6</b></p>
--------------------------------------	--	--	--	---





**DATUMS:**

HORIZONTAL DATUM IS NAD 83.  
VERTICAL DATUM IS NAVD 88.

IN-WATER EARTHWORK QUANTITIES	
DESCRIPTION	VOLUME (CY)
CHANNEL DREDGING	5,310
EXCAVATION	11,480
FILL	12,070

**NOTES:**

- HORIZONTAL CHANNEL LIMITS PROVIDED BY THE U.S. ARMY CORPS OF ENGINEERS FEDERAL NAVIGATION PROJECT FOR NORWALK HARBOR, U.S. ARMY CORPS OF ENGINEERS, AFTER DREDGE SURVEY, SUPPLEMENTAL PROJECT DRAWING 4/11/2014.
- EXISTING SWING SPAN FOUNDATIONS SHALL BE REMOVED TO THE BOTTOM OF THE TIMBER MAT (APPROXIMATELY EL +20) PER COORDINATION WITH THE UNITED STATES ARMY CORPS OF ENGINEERS.

**PLAN**

**LEGEND:**

- XX/XX/XX MAP/BLOCK/LOT
- XX/XX/XX APPROX. WATER DEPTH AT MLW/MHW
- [Symbol] DREDGING LIMITS

ELEVATION TABLE	
DESCRIPTION	ELEVATION (NAVD88)
100-YR FLOODPLAIN	10.0/12.0
HIGH TIDE LINE	HTL 5.2
MEAN HIGH WATER LINE	MHW 3.35
MEAN LOW WATER LINE	MLW -3.72
MEAN LOWER LOW WATER LINE	MLLW -3.98

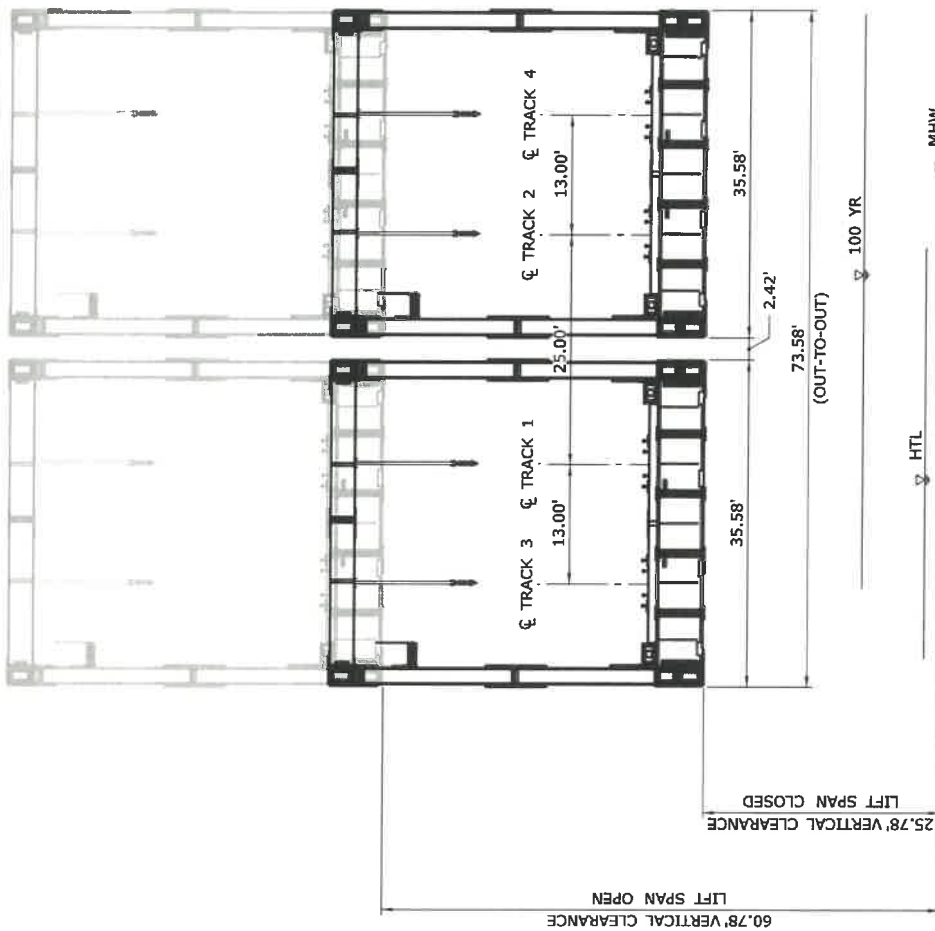
PROJECT LOCATION: **NORWALK FAIRFIELD COUNTY, CT**  
 PROJECT NO.: **0301-0176**  
 DATE: **02-07-2022**  
 DRAWING NO.: **BRIDGE PLAN**

PROJECT TITLE: **WALK BRIDGE REPLACEMENT OVER THE NORWALK RIVER BRIDGE NO. 04288R NORWALK RIVER MILE 0.1**



**HNTB** Corporation  
 Engineers, Architects, Planners  
 14 600 271-277  
 Fax (860) 271-7564

SCALE: **1" = 80'**  
 DRAWN: **T. ADINOLFI**  
 CHECKED: **V. ROBBINS**  
 APPROVED: **C. BROWN**



**NOTES:**

1. VERTICAL DATUM IS NAVD 88.
2. THIS VIEW IS REPRESENTATIVE OF A TYPICAL SECTION WITHIN THE NAVIGATION CHANNEL AT THE BRIDGE.

AUTHORIZED DREDGE ELEVATION EL. -13.98

OVER-DREDGE ALLOWANCE EL. -14.98

ELEVATION TABLE	
DESCRIPTION	ELEVATION (NAVD88)
100-YEAR FLOODPLAIN	10.0/12.0
HIGH TIDE LINE	HTL
MEAN HIGH WATER LINE	MHW 5.2
MEAN LOW WATER LINE	MLW 3.35
MEAN LOWER LOW WATER LINE	MLLW -3.72
	PROJ. CT NO. 0301-0176

PROJECT TITLE:

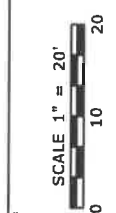
**WALK BRIDGE REPLACEMENT  
OVER THE NORWALK RIVER  
BRIDGE NO. 04288R  
NORWALK RIVER MILE 0.1**

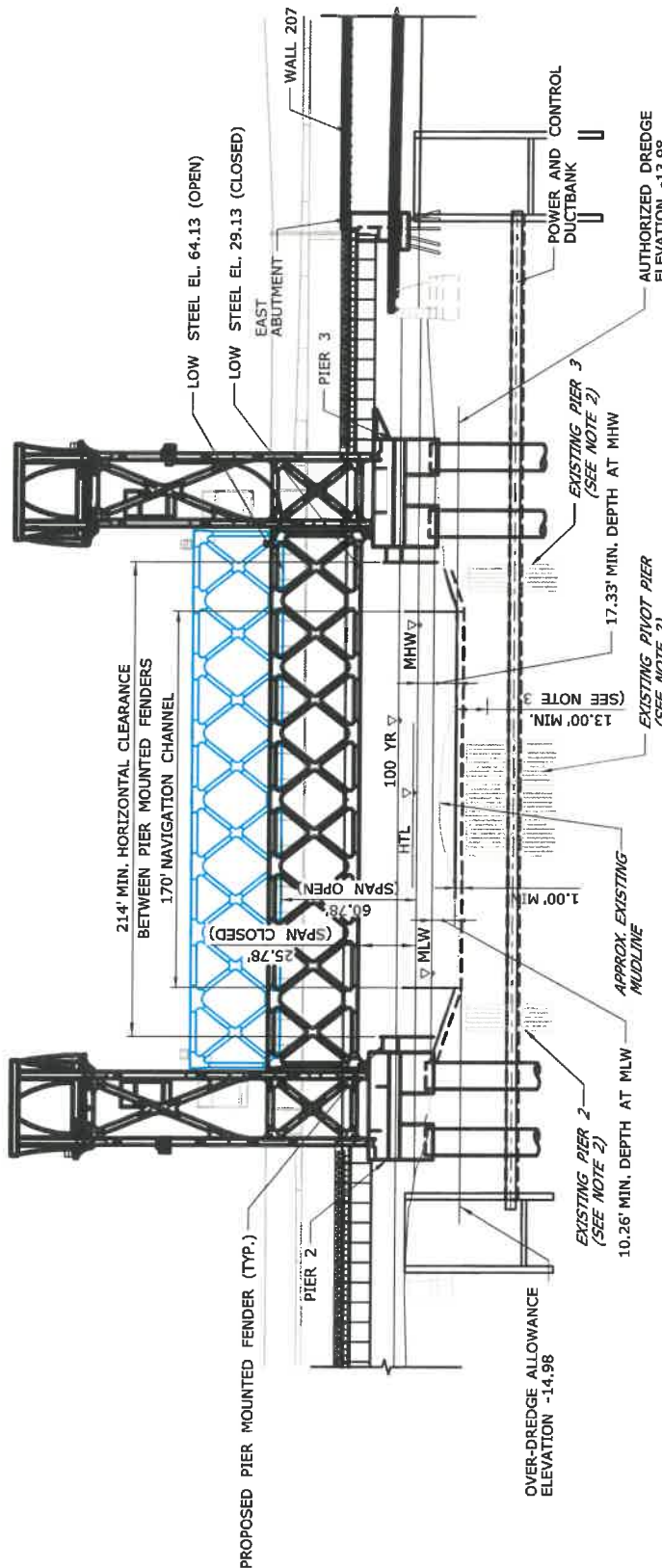


**HNTB**  
HNTB Corporation  
Engineers Architects Planners  
14 000 257-2077  
14 000 257-0546



DRAWN: T. ADINOLFI  
CHECKED: V. ROBBINS  
APPROVED: C. BROWN





**ELEVATION**  
(VIEW LOOKING NORTH)

**NOTES:**

1. AUTHORIZED DREDGE ELEVATION FOR THE FEDERAL NAVIGATION CHANNEL IS 10 FEET BELOW MLLW (-13.98 NAVD88).
2. EXISTING SWING SPAN FOUNDATIONS SHALL BE REMOVED TO THE BOTTOM OF THE TIMBER MAT (APPROXIMATELY EL -20), PER COORDINATION WITH THE UNITED STATES ARMY CORPS OF ENGINEERS.
3. POWER AND CONTROL DUCTBANK WILL BE INSTALLED TO MAINTAIN A CONSTANT ELEVATION ACROSS THE NAVIGATION CHANNEL. MINIMUM DEPTH SHOWN IS MEASURED TO THE TOP OF THE DUCTBANK AND IS SUBJECT TO APPROVAL BY THE U.S. ARMY CORPS OF ENGINEERS.
4. VERTICAL CLEARANCE IN THE CLOSED POSITION REPRESENTS AN INCREASE OF AT LEAST 9 FEET FROM THE EXISTING CONDITION. VERTICAL CLEARANCE IN THE OPEN POSITION IS CONSISTENT WITH THE VERTICAL CLEARANCE PROVIDED BY THE I-95 OVERPASS UPSTREAM OF THE PROJECT LOCATION.
5. VERTICAL DATUM IS NAVD 88.

DESCRIPTION	VOLUME (CY)
CHANNEL DREDGING	5,310
EXCAVATION	11,480
FILL	12,070



**ELEVATION TABLE**

DESCRIPTION	CONTOUR	ELEVATION (NAVD88)
100-YR FLOODPLAIN	100 YR	10.0/12.0
HIGH TIDE LINE	HTL	5.2
MEAN HIGH WATER LINE	MHW	3.35
MEAN LOW WATER LINE	MLW	-3.72
MEAN LOWER LOW WATER LINE	MLLW	-3.98

PROJECT LOCATION: **NORWALK FAIRFIELD COUNTY, CT**  
 DRAWING TITLE: **BRIDGE ELEVATION**  
 PROJECT NO.: **0301-0176**  
 DATE: **02-07-2022**  
 DRAWING NO.: **4 OF 6**

STATE OF CONNECTICUT  
 DEPARTMENT OF TRANSPORTATION  
 PROJECT TITLE:  
**WALK BRIDGE REPLACEMENT OVER THE NORWALK RIVER BRIDGE NO. 04288R NORWALK RIVER MILE 0.1**



HNTB Corporation  
 Engineers Architects  
 1400 Main Street  
 New Haven, CT 06510  
 Tel: (203) 371-7277  
 Fax: (203) 371-7284

DRAWN: **T. ADINOLFI**  
 CHECKED: **V. ROBBINS**  
 APPROVED: **C. BROWN**



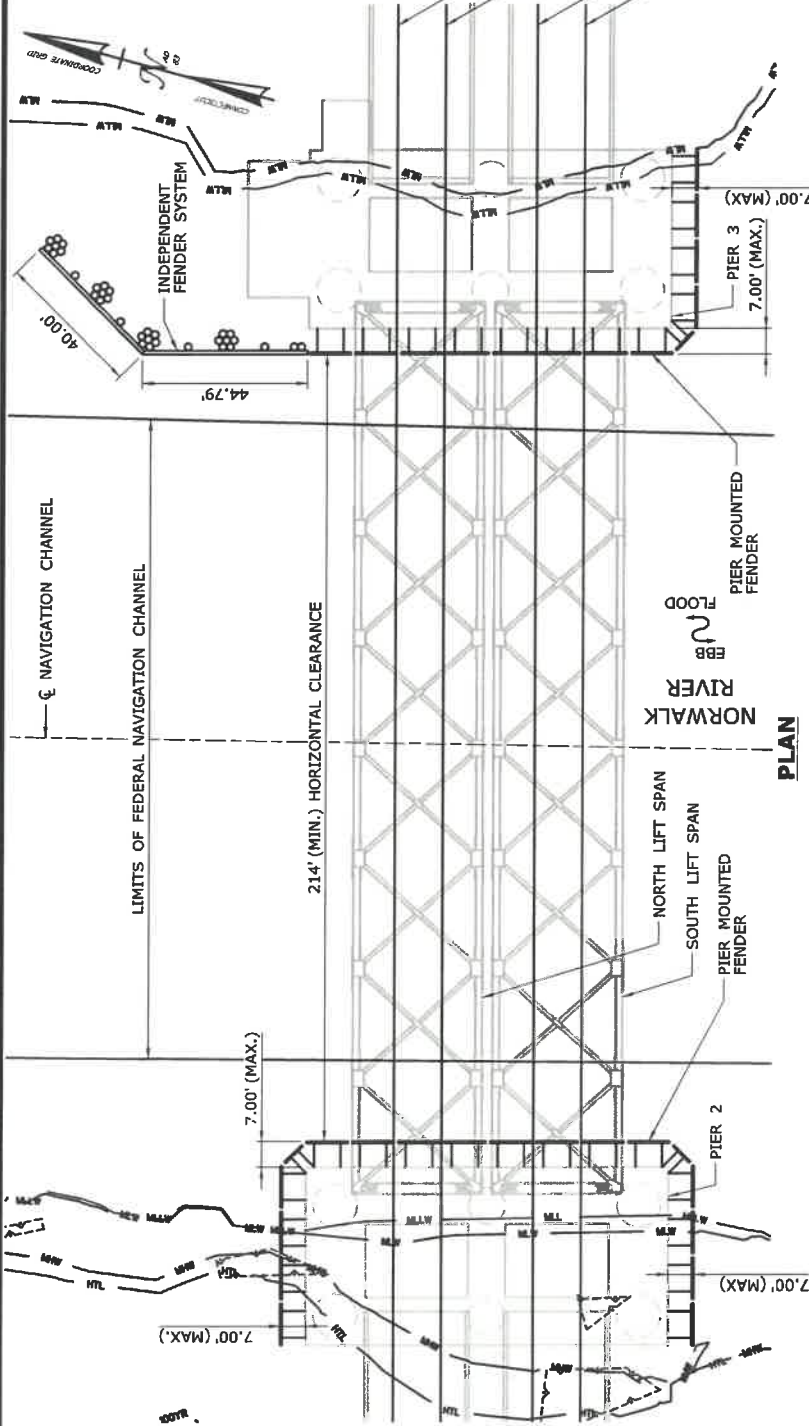


**LEGEND:**

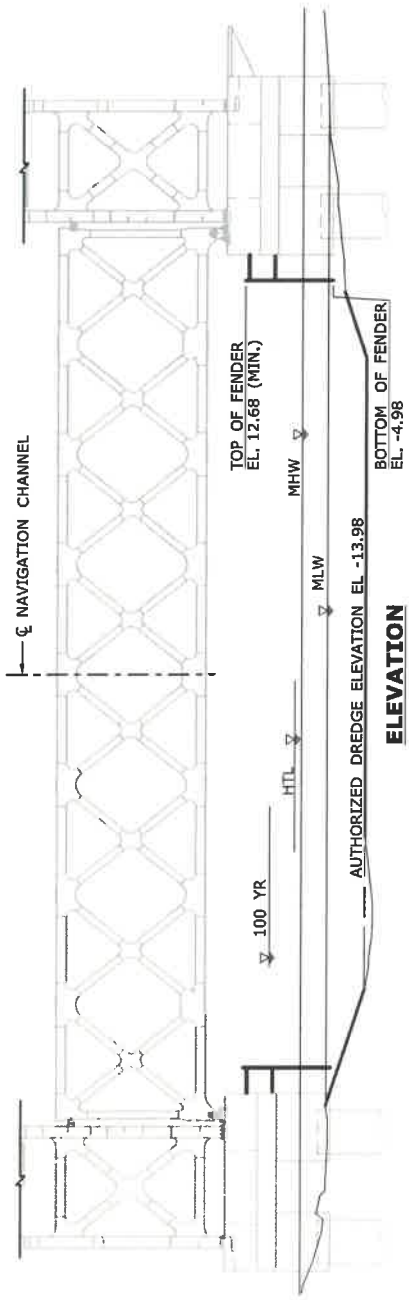
- DENOTES PLUMB PILE
- ⊗ DENOTES PILE CLUSTER

**NOTES:**

1. VERTICAL DATUM IS NAVD 88.
2. WALES AND BLOCKING WILL BE FIBERGLASS-REINFORCED COMPOSITE LUMBER.
3. ALL HARDWARE FOR THE FENDER SYSTEM WILL BE STAINLESS STEEL WIRE WRAPS IF USED, WILL BE SHEATHED WITH UV-RESISTANT MATERIAL.



**PLAN**



**ELEVATION**

ELEVATION TABLE	
DESCRIPTION	ELEVATION (NAVD88)
100-YR FLOODPLAIN	10.0/12.0
HIGH TIDE LINE	HTL 5.2
MEAN HIGH WATER LINE	MHW 3.35
MEAN LOW WATER LINE	MLW -3.72
MEAN LOWER LOW WATER LINE	MLLW -3.98

PROJECT LOCATION:	NORWALK FAIRFIELD COUNTY, CT
DRAWING TITLE:	FENDER SYSTEM
PROJECT NO.:	0301-0176
DATE:	02-07-2022
DRAWING NO.:	5 OF 6

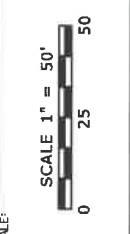
**WALK BRIDGE REPLACEMENT OVER THE NORWALK RIVER**  
**BRIDGE NO. 04288R**  
**NORWALK RIVER MILE 0.1**

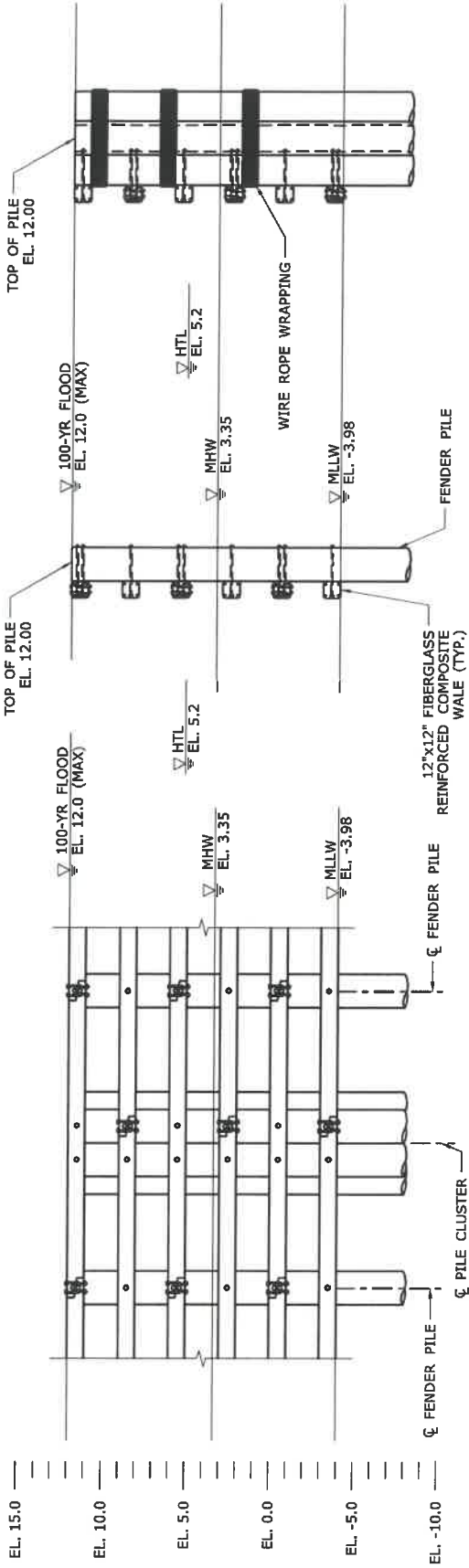


**HNTB**  
 HNTB Corporation  
 Engineers, Architects, Planners  
 10000 Parkside Drive  
 Columbia, MD 21046  
 Tel: (410) 321-2327  
 Fax: (410) 321-2344



DRAWN: T. ADINOLFI  
 CHECKED: V. ROBBINS  
 APPROVED: C. BROWN





**TYPICAL INDEPENDENT FENDER SYSTEM ELEVATION**

**TYPICAL SECTION**

**TYPICAL PILE CLUSTER ELEVATION**

**NOTES:**

1. VERTICAL DATUM IS NAVD 88.
2. NAVIGATION LIGHTS WILL BE USED TO DEFINE THE LIMITS OF THE FEDERAL NAVIGATION CHANNEL.



ELEVATION TABLE		CONTOUR	ELEVATION (NAVD88)
100-YEAR FLOODPLAIN	100 YR	HTL	10.0/12.0
HIGH TIDE LINE		MHW	5.2
MEAN HIGH WATER LINE		MLW	3.35
MEAN LOW WATER LINE		MLLW	-3.72
MEAN LOWER LOW WATER LINE			-3.98

PROJECT LOCATION:	NORWALK FAIRFIELD COUNTY, CT	PROJECT NO.:	0301-0176
DRAWING TITLE:	FENDER SYSTEM DETAILS	DATE:	02-07-2022
DRAWING NO.:		DRAWING NO.:	6 OF 6

PROJECT TITLE:  
**WALK BRIDGE REPLACEMENT  
 OVER THE NORWALK RIVER  
 BRIDGE NO. 04288R  
 NORWALK RIVER MILE 0.1**



HNTB Corporation  
 Engineers, Planners  
 Architects, Interiors  
 Environmental  
 Program Management  
 1000 Northpointe Blvd  
 Suite 200  
 Northbrook, IL 60062  
 Tel: (847) 574-2700  
 Fax: (847) 574-2707



DRAWN: T. ADINOLFI  
 CHECKED: V. ROBBINS  
 APPROVED: C. BROWN

