

NAVIGATION SAFETY RISK ASSESSMENT Walk Bridge Replacement Project

Norwalk, CT

January 18, 2021



Prepared For:

WSP USA, Inc.
500 Winding Brook Drive
Glastonbury, CT 06033

Prepared By:

RACE
COASTAL ENGINEERING
www.racecoastal.com

Table of Contents

| | |
|---|----|
| 1. Introduction | 1 |
| 1.1. Purpose | 1 |
| 1.2. Background | 1 |
| 1.3. References | 3 |
| 2. Section A – Risk Assessment Related to <i>Spirit of the Sound</i> and Ferry Operations During Construction Activities | 4 |
| 2.1. Vessels Transiting Project Area | 4 |
| 2.1.1. <i>Spirit of the Sound</i> | 4 |
| 2.1.2. Ferry | 5 |
| 2.1.3. Recreational Vessels | 6 |
| 2.1.4. Rowing and Paddlecraft | 6 |
| 2.1.5. Commercial Vessels | 7 |
| 2.1.6. Contractor Equipment | 7 |
| 2.2. Site 1 – Existing Location | 8 |
| 2.2.1. Stroffolino Bridge | 8 |
| 2.2.2. Modifications to Accommodate Const. Activities | 9 |
| 2.3. Site 2 – South of Stroffolino Bridge | 9 |
| 2.4. Vessel Operational Hazards | 11 |
| 2.4.1. Collision | 11 |
| 2.4.2. Allision | 12 |
| 2.4.3. Wave Damage | 12 |
| 2.5. Likelihood | 13 |
| 2.6. Consequence | 13 |
| 2.7. Risk Assessment | 14 |
| 2.7.1. Current Operations (No Construction) | 16 |
| 2.7.2. Berthing Option A (During Construction) | 17 |
| 2.7.3. Berthing Option B (During Construction) | 18 |
| 2.7.4. Risk Ranking Summary | 19 |
| 2.8. Conclusion | 20 |
| 3. Section B – Overview of Interaction Between Existing River Users and Proposed Contractor Activities | 21 |
| 3.1. Existing River Users | 22 |
| 3.1.1. Recreational | 23 |
| 3.1.2. Commercial | 23 |
| 3.1.3. Rowing and Paddlecraft | 23 |
| 3.2. Proposed Contractor Vessels | 23 |
| 3.3. Interaction Between Vessels | 24 |
| 3.3.1. Existing Operations | 24 |
| 3.3.2. During Construction | 25 |
| 3.4. Mitigation Strategies | 25 |
| 3.5. Conclusion | 26 |



List of Tables

| | |
|---|----|
| Table 1: References..... | 3 |
| Table 2: Spirit of the Sound Specifications..... | 4 |
| Table 3: Sheffield Island Ferry Specifications..... | 5 |
| Table 4: Hazards..... | 12 |
| Table 5: Likelihood Ranking..... | 13 |
| Table 6: Consequence Ranking..... | 13 |
| Table 7: Risk Matrix..... | 15 |
| Table 8: Risk Classification..... | 15 |
| Table 9: Risk Ranking – Current Operations (No Construction)..... | 16 |
| Table 10: Risk Ranking – Berthing Option A (During Construction)..... | 17 |
| Table 11: Risk Ranking – Berthing Option B (During Construction)..... | 18 |
| Table 12: Risk Ranking Summary..... | 19 |
| Table 13: Recreational Marinas North of Walk Bridge..... | 21 |

List of Figures

| | |
|--|----|
| Figure 1: Existing Berthing Arrangement..... | 8 |
| Figure 2: Berthing Option A Arrangement..... | 9 |
| Figure 3: Proposed Berthing Option B Location..... | 10 |
| Figure 4: Berthing Option B Arrangement..... | 11 |
| Figure 5: Walk Bridge Openings..... | 18 |
| Figure 6: Existing Waterfront Users..... | 19 |
| Figure 7: Typical Barge Location Plan..... | 21 |

List of Photographs

| | |
|--|---|
| Photograph 1: Project Area..... | 2 |
| Photograph 2: <i>Spirit of the Sound</i> | 5 |
| Photograph 3: Sheffield Island Ferry..... | 6 |

Credits for Cover Figures

- *Spirit of the Sound* (www.norwalkaquarium.org)
- Sheffield Island Ferry (www.seaport.org)
- Bridge Construction Rendering (Walk Bridge Program – In Water Work Plan – CMJV)



1. Introduction

RACE Coastal Engineering, LLC (“RACE”) was engaged by WSP USA, Inc. (“WSP”) to perform services related to the assessment of navigation safety associated with the Walk Bridge Replacement Project (WSP #523687). Specifically, this report includes two sections concerning navigational safety matters defined below:

- Section A – Navigation Safety Risk Assessment Related to *Spirit of the Sound* and Ferry Operations During Construction Activities
- Section B – Overview of Interactions Between Current River Users and Proposed Construction Activities

The content of these Sections is described further herein.

1.1. Purpose

The purpose of this effort is two-fold as indicated in the two Sections noted above. Section A will address the navigation safety risk assessment of the operation of the existing Maritime Aquarium Research Vessel, *Spirit of the Sound* (“*Spirit of the Sound*”) and the Sheffield Island Lighthouse Ferry (“Ferry”) with proposed construction activities. Section B will provide an overview of interactions of other river traffic with construction vessels and activities.

1.2. Background

The existing railroad bridge over the Norwalk River, the Walk Bridge, is aged and has been determined to be in need of replacement. Such replacement will require the contractor to employ water-based construction activities. These activities need to be carefully considered in the context of existing marine traffic such that safety, commerce, and recreation can be managed.

The Walk Bridge crosses the Norwalk River just north of the Stroffolino Bridge. Both the Stroffolino and Walk Bridges can be opened to allow for navigation without air draft limits to sections north of the bridges. There are several commercial operations and recreational operations that currently exist north of the bridges that will likely be impacted by the construction activities.

Additionally, the Sheffield Island Ferry and Aquarium research vessel *Spirit of the Sound*, are located immediately south of the Walk Bridge and will likely be affected by the proposed construction activities. The Ferry operates from June through September performing both ferry activities to Sheffield Island, as well as, sunset tours. The *Spirit of the Sound* operates year round on almost a daily basis. These commercial operations have been in existence and operating from this location for over 30-years based on conversations with the operators. It is understood that these vessel operators would prefer not to be displaced from this location due to construction activities.

The following photograph shows the relationship between the vessel berths and the adjacent bridges.



Photograph 1: Project Area



According to the Port and Waterway Safety Assessment (PAWSA) Workshop Report conducted on May 3 – 4, 2005 for Long Island Sound by the U.S. Coast Guard, the Norwalk Channel was a noted concern related to its congestion. Additionally, it was noted in this Workshop Report that the orientation and dimensions of older railroad bridges are impediments to safe navigation and suggestions for mitigation include more appropriate bridge clearance dimensions for safe navigation. The replacement of the Walk Bridge will aid in improving congestion with wider clear access in the navigational channel following completion of construction. During construction, however, there will be increased congestion and limitation of access associated with the bridge replacement.

Careful consideration of vessel traffic, both ongoing river traffic as well as increased traffic associated with the Walk Bridge is necessary to provide for safe navigation during construction activities.

1.3. References

In preparation of this report, RACE relied on information provided by others as part of the overall Walk Bridge Project. It should be noted that the Walk Bridge Design and Construction Staging and Access Plans are not advanced to final stage at this point and modifications to these documents may require modifications to this report. Following is a list of documents referenced:

Table 1: References

| Reference | | | |
|-----------|---|--|----------------------|
| Ref. No. | Name | By | Date |
| 1 | Navigation Study | HNTB | May 2015 |
| 2 | Vessel Relocation Study | Milone & MacBroom HDR HNTB | Jan. 8, 2018 |
| 3 | Walk Bridge Vessel Relocation Alternatives (4-22-20).pdf | CTDOT | DRAFT |
| 4 | Vessel Relocation OTS1 – 2020-7-21.pdf | CTDOT HNTB | Rev June 24, 2020 |
| 5 | Walk Bridge Program – CMJV In-Water Work Plan (Presentation to the Norwalk HMC) | CMJV | Aug 26, 2020 |
| 6 | Ports and Waterways Safety Assessment Workshop Report – Long Island Sound | U.S. Coast Guard Navigation Center | May 4-5, 2005 |
| 7 | Norwalk Harbor Management Plan (2009) | Norwalk Harbor Management Commission | Aug. 11, 2009 |



2. Section A – Risk Assessment Related to *Spirit of the Sound* and Ferry Operations During Construction Activities

This Section addresses the risk assessment of three scenarios for the operation of the *Spirit of the Sound* and the Ferry. These scenarios include:

- Current Operations (No construction)
- Berthing Option A (During construction)
- Berthing Option B (During Construction)

The current operations scenario is being considered along with Option A and Option B berthing locations as described in Section 2.2 and 2.3, respectively as a baseline case. Berthing Option A includes a reconfiguration of the Ferry and *Spirit of the Sound* berths in their current general vicinity in between the Stroffolino and Walk Bridges. Berthing Option B considers relocation of the operations of the subject vessels to a location south of the Stroffolino Bridge and on the west side of the harbor.

Risk is defined as the product of likelihood and consequence of a particular hazard. This report will identify specific hazards that could impact vessel operations in the three scenarios noted above. Hazards will be assessed a weighted risk as determined by a function of the consequence and likelihood of such hazards. Assessment of risk will be based on experience of licensed professional mariners familiar with the subject area and marine construction operations, as well as, licensed professional engineers experienced in the design of marine and port facilities. It is anticipated that this risk assessment will be used by the Client to further discussions with regulatory entities to determine most appropriate vessel location during construction operations.

2.1. Vessels Transiting Project Area

In considering the Navigation Safety Risk Assessment for the operation of the Ferry and *Spirit of the Sound* it is important to consider both the existing usage, as well as, the usage during construction activities. The following Section reviews the various types of craft that are expected to be transiting the project area.

2.1.1. Spirit of the Sound

The *Spirit of the Sound* is a 65' catamaran hull research vessel operated by the Norwalk Aquarium. Specifications on the vessel per Reference 2 follow:

Table 2: Spirit of the Sound Specifications (Ref. 2)

| | |
|-----------|--------------------|
| Length | 65 feet |
| Beam | 21 feet |
| Freeboard | ±42" to main deck |
| Draft | ±4.5 feet (loaded) |
| GRT | 36 |

The *Spirit of the Sound* currently berths on the northern floating dock between the Stroffolino and Walk Bridges.



Photograph 1: *Spirit of the Sound* (obtained from www.maritimeaquarium.org)



Based on conversations with vessel operator, the Norwalk Aquarium has been operating research vessels since approximately 1988.

The *Spirit of the Sound* operated year-round almost on a daily basis. During peak usage in the spring and fall the vessel can make up to three trips per weekday and two trips per weekend (Ref. 2).

2.1.2.Ferry

The Sheffield Island Lighthouse Ferry (“Ferry”) is an aluminum hulled, 49’ catamaran capable of accommodating 49 passengers. Specifications on the vessel per Reference 2 follow:

Table 3: Sheffield Island Lighthouse Ferry (Ref. 2)

| | |
|-----------|---|
| Length | 50 feet |
| Beam | 16 feet |
| Freeboard | ±2.5’ to main deck (unloaded) |
| Draft | ±3.0 feet to bottom of outboard engines |
| GRT | 11 |

The Ferry currently berths on the southern floating dock between the Stroffolino and Walk Bridges.



Photograph 2: Sheffield Island Ferry (obtained from www.seaport.org)



Based on conversations with the operator, the Ferry has operated out of this location since the mid-1980s.

Based on schedule information taken from the website www.seaport.org, the Ferry operates from June 20th to September 27th and offers both Lighthouse Tours and Sunset Tours. The Ferry does not operate on Monday and Tuesday. On Wednesday it operates a single Lighthouse Tour and from Thursday to Sunday operates two Tours. Sunset Tours are offered from Wednesday to Sunday.

2.1.3.Recreational Vessels

Recreational vessels including sailing and power craft commonly transit past the project area primarily during late spring, summer, and early fall. There are five facilities located upstream of the Walk Bridge with approximately 180 slips. Vessels berthed in these locations must pass the project site to access the waters of Long Island Sound. Larger powerboats and sailing vessels require bridge openings at both the Walk and Stroffolino Bridges to allow for transit.

2.1.4.Rowing and Paddlecraft

Rowing is a popular recreational and physical fitness activity in the Norwalk River. There are three rowing clubs located north of the Walk Bridge. These include Norwalk Rowing Club, Maritime Rowing Club, and Connecticut Boat Club. These are active clubs that offer members the ability to row during the season which commonly extends from May to October. Rowing shells are commonly escorted by a coach launch. Neither the rowing shells nor the coach launches would require bridge openings.

In addition to organized rowing activities the use of paddleboards and kayaks has been observed in the project vicinity.



2.1.5. Commercial Vessels

There are three commercial port facilities located north of the Walk Bridge. These include Devine, O&G, and King Industries. Currently of these three, only Devine and O&G actively receive product via barge which includes aggregate and other earth products.

Based on the 2019 Metro-North data, barges transit the Walk Bridge every month.

2.1.6. Contractor Equipment

The replacement of the Walk Bridge is a significant project anticipated to occur over a period of approximately 5 years. Construction equipment necessary for this project will be both marine-based and land-based. This assessment is concerned with marine-based equipment.

It is understood that the Contractor will utilize construction barges (both crane barges and material barges) ranging in size from 72'x54' to 280'x54'. Typical crane barge is anticipated to be 72'x54' and typical material barge 120'x50' (Ref. 5).

In addition to the barges noted above, additional floating equipment will be utilized to support construction activities. This will include pushboats, tugboats, safety boats, and float stages.

Material barges will transport material in and debris from the Walk Bridge replacement site to a construction staging area. Barges in transit will be propelled by pushboats or tugboats. Based on conversation with representative from the contractor it was estimated that material barges would transit the channel adjacent to the current Ferry and *Spirit of the Sound* berths approximately twice per day (once inbound and once outbound).

Crane barges are likely to remain primarily located at the Walk Bridge site and re-positioned as necessary to perform work functions. It is not anticipated that these barges will transit past the current Ferry and *Spirit of the Sound* berths nearly as much as the material barges.

Based on presentations by the Contractor, it is understood that construction equipment will be staged to limit impacts to upstream navigation by leaving one channel open for a majority of the construction activities.

2.2. Site 1 – Existing Location

Site 1 is within the general vicinity of the current berthing location of the Ferry and *Spirit of the Sound* vessels. This is located on the west side of the Norwalk River north of the Stroffolino Bridge and south of the Walk Bridge. There are currently two separate docking facilities for each vessel.



The following photograph depicts the current berthing positions of the Ferry and *Spirit of the Sound*.

Figure 1: Existing Berthing Arrangement (from Bing Maps)



There is a Federally authorized navigation channel located to the east of the berthing area and extending upstream and downstream from this location. This channel is located between $\pm 40'$ and $\pm 50'$ from the face of the existing docks and varies in width in this section of the channel from $\pm 100'$ (at the Stroffolino Bridge location) to $\pm 160'$ (at the *Spirit of the Sound* berthing area).

Proposed work on the Walk Bridge will be conducted north of the berthing area of the Ferry and *Spirit of the Sound*.

2.2.1. Stroffolino Bridge

The Stroffolino Bridge is a bascule bridge that routes Washington Street (Rte 136) over the Norwalk River. According to NOAA chart number 12368 there is a vertical clearance of 8' during Mean Higher High Water (MHHW) and a horizontal clearance of 100'.

Current vessel operations require bridge openings are required for all transits of the *Spirit of the Sound* and for the Ferry during times of higher tides.

The bridge operation regulations are listed at 33 CFR 117.217(a) and follow:



Per 33 CFR 117.217(a)

The draw of the Washington Street S136 Bridge, mile 0.0, at Norwalk, shall operate as follows:

The draw shall open on signal; except that, from 7 a.m. to 8:45 a.m., 11:45 a.m. to 1:15 p.m., and 4 p.m. to 6 p.m., Monday through Friday, except holidays, the draw need not be opened for the passage of vessels that draw less than 14 feet of water.

The draw need not open for the passage of vessel traffic, from 10 a.m. to 12 p.m., on the first Saturday in December, to facilitate the running of the annual Norwalk River Fun Run. Should inclement weather force the postponement of the race the above bridge closure shall be implemented the next day, the first Sunday after the first Saturday in December, from 10 a.m. to 12 p.m.

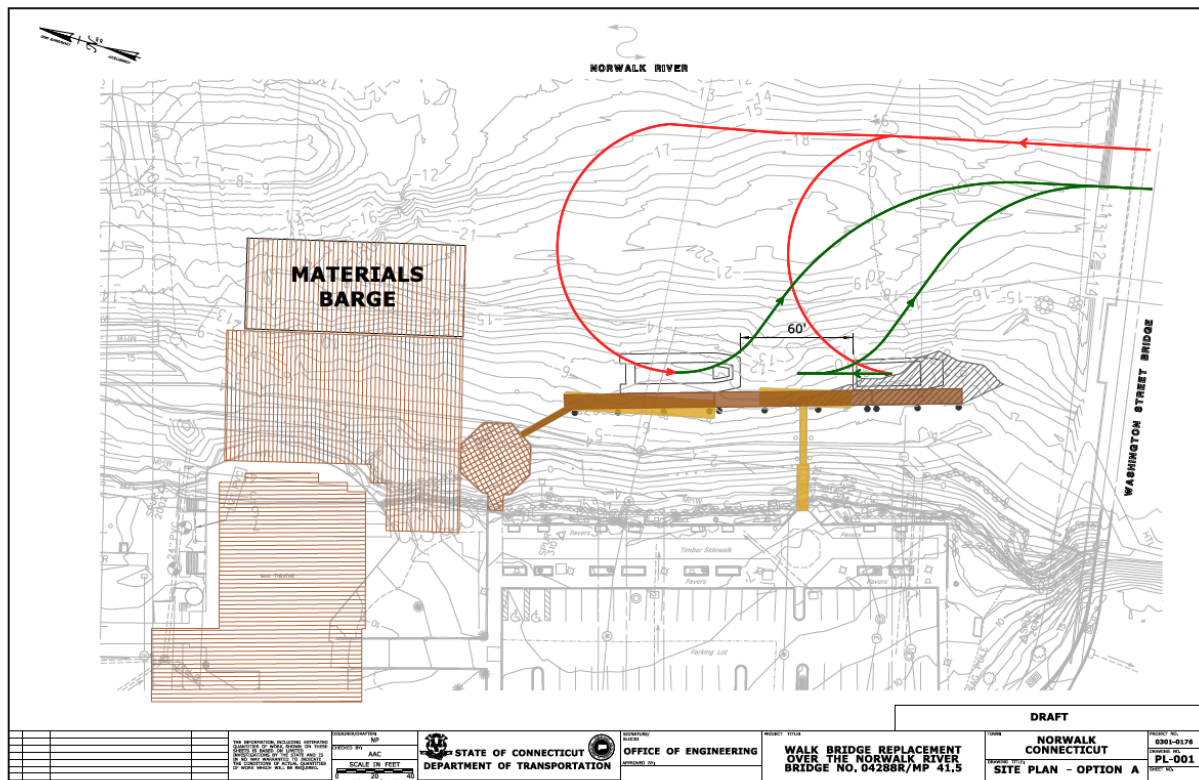
The bridge opening signal is three short blasts. Vessels drawing 14 feet of water or more shall add one prolonged blast after the three short blasts.

2.2.2.Modification to Accommodate Construction Activities (Berthing Option A)

As a means to address proximity of vessel berthing to construction activities, the CT-DOT has proposed a modification to the existing docks to shift both the Ferry and *Spirit of the Sound* south and further away from the Walk Bridge.

This revised location will require new docks and dredging to accommodate. It is understood that the vessel operators are comfortable with these new dock locations from an operational perspective and this was verified to the operator’s satisfaction on June 17, 2020 by way of a vessel docking test. A report documenting this test to be prepared by CT-DOT is anticipated to be forthcoming.

Figure 2: Berthing Option A Arrangement (from CTDOT - Ref. 3)



The purpose of this proposed relocation is to maximize the distance between the Ferry and *Spirit of the Sound* during proposed construction activities while allowing the vessels to remain in the general vicinity of their current berthing locations. This strategy is understood to be the preference of the operators of the Ferry and *Spirit of the Sound* in order to minimize disruptions to their operations.

2.3. Site 2 – South of Stroffolino Bridge

Site 2 is located south of the Stroffolino Bridge and is also on the west side of the Federal Channel and approximately 700' south of the Option A site.

As an alternative to Option A, the CT-DOT has developed a berthing option at Site 2 referred to as Option B. While this option is not preferred by the operators it is being considered as an alternative to address concerns with vessel traffic congestion north of the Stroffolino Bridge associated with the Walk Bridge Construction activities.

Option B would include a 165' long dock positioned parallel to the Federal Channel. This length of dock was selected to accommodate both the Ferry and *Spirit of the Sound*. The docks would be located approximately 14' to 17' from the Federal Channel and positioned between two active marina facilities to the north and south.

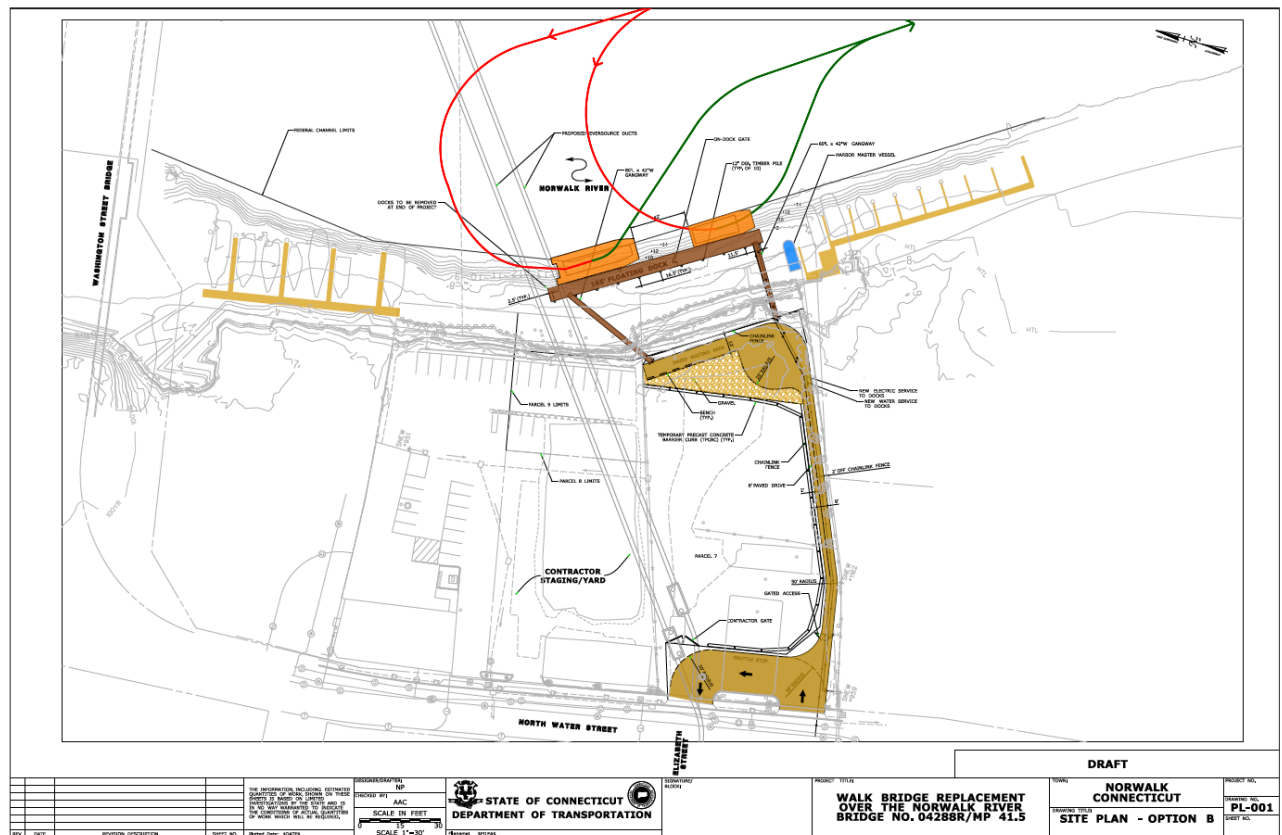
The following photograph depicts the general vicinity of Site 2.

Figure 3: Site 2 – Proposed Berthing Option B Location (from Bing Maps)



Option B berthing arrangement is depicted below.

Figure 4: Berthing Option B Arrangement (from CTDOT - Ref. 3)



2.4. Vessel Operation Hazards

A hazard is a situation or occurrence that can cause a risk and can be defined as a potential source of personal injury or property damage. Potential navigational hazards associated with the operation the Ferry and *Spirit of the Sound* in the immediate vicinity of Sites 1 and 2 were developed by RACE as part of this Report. Note that these hazards are related to situations associated with these two subject vessels and vessels / structures noted below. Additional hazards amongst other vessels are not considered herein.

Hazards are limited to the immediate general vicinity of the Option A and Option B locations.

These hazards were reviewed with the Norwalk Harbor Management Commission and Norwalk Harbormaster during a virtual meeting on May 8, 2020. Grounding was not considered a hazard for the purpose of this analysis as it is understood that dredging would occur as necessary to deepen berths in order to accommodate vessels. Hazards are generally considered in the following three categories.

2.4.1. Collision

Collision hazards are related to impact of two vessels while underway. Collisions can occur between any vessels and the subject vessels (ie Ferry and *Spirit of the Sound*) including existing river traffic and/or proposed construction vessels. Various scenarios of collision hazards are identified on Table 4 below.



2.4.2. Allision

Whereas collision considers the risk of two vessels contacting while underway, allision considers the situation of a vessel striking a stationary object. This stationary object could be a berthed vessel, bridge fender, pilings, etc. Various scenarios of allision hazards are identified in Table 4 below.

2.4.3. Wave Damage

This hazard considers wave damage that could occur to vessels berthed at their docking facilities. Waves are considered to be storm induced wind-waves. No consideration for vessel wake is included as it is understood per local ordinances that all considered areas for vessel berthing would be subject to “no wake” zones.

Table 4: Hazards

| Hazard | Hazard ID | Hazard Description |
|---|-----------|---|
| Collision⁽¹⁾ Between Ferry or <i>Spirit of the Sound</i> and.... | 1-A | Recreational vessels |
| | 1-B | Rowing shells and other paddlecraft |
| | 1-C | Commercial vessels |
| | 1-D | Walk Bridge marine construction equipment |
| Allision⁽²⁾ Between Ferry or <i>Spirit of the Sound</i> and.... | 2-A | Vessel dock |
| | 2-B | Adjacent marina structures |
| | 2-C | Stroffolino Bridge |
| | 2-D | Other vessels (recreational, rowing, commercial). Ferry or <i>Spirit of the Sound</i> berthed, other vessels in transit. |
| | 2-E | Other vessels (recreational, rowing, commercial). Ferry or <i>Spirit of the Sound</i> in transit, other vessels berthed. |
| | 2-F | Walk Bridge marine onstruction equipment. Ferry or <i>Spirit of the Sound</i> berthed, construction equipment in transit. |
| | 2-G | Walk Bridge marine construction equipment. Ferry or <i>Spirit of the Sound</i> in transit, construction equipment stationary. |
| Wave Damage | 3-A | Damage to vessels while berthed due to wind-waves. |

(1) Collision refers to contact between two vessels underway

(2) Allision refers to contact between underway vessel and stationary object (ie dock, berthed vessel, bridge abutments)



2.5. Likelihood

In order to assess the risk of a particular hazard identified in Section 2.4 above, both a likelihood and consequence of such a hazard need to be assigned. A five-point ranking system will be utilized for the estimated likelihood of a hazard occurring. Level 0 is included for a situation where hazard is not present for the considered case. This ranking system is detailed below.

Table 5: Likelihood Ranking

| Level | Likelihood | Description |
|-------|----------------|--|
| 0 | None | Situation does not exist for hazard |
| 1 | Rare | May occur with exceptional circumstances |
| 2 | Unlikely | Could occur sometime |
| 3 | Possible | Might occur sometime |
| 4 | Likely | Will probably occur |
| 5 | Almost Certain | Is expected to occur |

2.6. Consequence

In order to assess the risk of a particular hazard identified in Section 2.4 above, both a likelihood and consequence of such a hazard need to be assigned. A five-point ranking system will be utilized for the estimated consequence of a hazard occurring. Consequences are considered for both personal injury and property damage. For the purposes of ranking it is assumed that the personal and property rankings are tied together. Example – a Level 5 Consequence could have both a fatality and sinking while a Level 1 Consequence could require first aid treatment and cosmetic vessel repair.

This ranking system is detailed below.

Table 6: Consequence Ranking

| Level | Personal Injury | Property Damage |
|-------|--|---|
| 1 | Minor. First aid treatment only. | Cosmetic or surficial |
| 2 | Requiring minor medical assistance | Minor with no impact to service schedule |
| 3 | Requiring hospitalization | Moderate requiring repairs prior to return to service |
| 4 | Resulting in long-term or permanent disability | Major requiring vessel haul-out and long-term loss of use |
| 5 | Fatality | Critical damage up to and including sinking |



2.7. Risk Assessment

Assessment of risk will be based on experience of licensed professional mariners familiar with the subject area and marine construction operations, as well as, licensed professional engineers experienced in the design of marine and port facilities. Risk will be assessed for three scenarios including:

- Current Operations (No construction)
- Berthing Option A (During construction)
- Berthing Option B (During Construction)

Determination of likelihood and consequence of each hazard is subject to various interpretations. Efforts have been made in the development of this report to fairly weight these factors. These efforts include:

- Professional experience in vessel operations, marine facilities, and construction activities
- Familiarity with project area
- Review of past documentation related to navigation safety associated with the Walk Bridge Project
- Attendance at multiple Harbor Management Commission meetings where these matters were discussed
- Attendance during vessel docking test on June 17, 2020

It is not the intent of this risk assessment to be fully deterministic, but rather to weight risks and provide a framework for discussions related to potential mitigation strategies as may be required by regulatory bodies based on final selected alternative.

The following Table identifies the risk matrix classification. The numeric risk value is the product of the likelihood and consequence rankings.



Table 7: Risk Matrix

| | | | | | | | |
|-------------------------|----------------|--------------------------|----------|-----------------------|----------|----------------------|----------|
| Likelihood Level | Rare | 1 | 1 | 2 | 3 | 4 | 5 |
| | Unlikely | 2 | 2 | 4 | 6 | 8 | 10 |
| | Possible | 3 | 3 | 6 | 9 | 12 | 15 |
| | Likely | 4 | 4 | 8 | 12 | 16 | 20 |
| | Almost Certain | 5 | 5 | 10 | 15 | 20 | 25 |
| | | Consequence Level | 1 | 2 | 3 | 4 | 5 |
| | | Personal Injury | Minor | Minor Medical Assist. | Hospital | Long-term disability | Fatality |
| | | Property Damage | Cosmetic | Minor | Moderate | Major | Critical |

Table 8: Risk Classification

| Score | Classification | Action |
|---------|----------------|--|
| 1 - 2 | Slight | No action required |
| 3 - 4 | Minor | No additional controls required. Increase awareness of risk. |
| 5 - 9 | Moderate | Efforts required to reduce risk. |
| 10 - 14 | High | Risk reduction plan to be developed to acceptable level. |
| 15 - 25 | Severe | Unacceptable risk |

It is anticipated that this risk assessment will be used by CTDO to further discussions with regulatory entities to determine most appropriate vessel location during construction operations.

The following Sections present risk rankings for the three scenarios considered.



2.7.1. Current Operations (No Construction)

Table 9: Risk Ranking – Current Operation (No Construction)

| Hazard | Ranking | | Notes |
|---|-------------|---|--|
| 1-A Collision Recreational | Likelihood | 1 | Based on 30+ years of accident free operation |
| | Consequence | 4 | Based on injury / damage for like sized vessels |
| | Risk | 4 | |
| 1-B Collision Paddlecraft | Likelihood | 1 | Based on 30+ years of accident free operation |
| | Consequence | 5 | Based on injury / damage for disproportionally sized vessels |
| | Risk | 5 | |
| 1-C Collision Commercial | Likelihood | 1 | Based on 30+ years of accident free operation |
| | Consequence | 5 | Based on injury / damage for disproportionally sized vessels |
| | Risk | 5 | |
| 1-D Collision Const. Equip. | Likelihood | 0 | No construction case |
| | Consequence | 5 | Based on injury / damage for disproportionally sized vessels |
| | Risk | 0 | |
| 2-A Allision Vessel dock | Likelihood | 2 | Based on usage of vessels including multiple trips per day in season |
| | Consequence | 2 | Low speed docking maneuvering would limit impact damage |
| | Risk | 4 | |
| 2-B Allision Adj marina | Likelihood | 0 | No adjacent marina at Site 1 |
| | Consequence | 2 | Low speed docking maneuvering would limit impact damage |
| | Risk | 0 | |
| 2-C Allision Stroffolino Br | Likelihood | 1 | Based on 30+ years of accident free operation |
| | Consequence | 3 | Based on low speed maneuvering and presence of bridge fendering |
| | Risk | 3 | |
| 2-D Allision Ex. Vessels ⁽¹⁾ | Likelihood | 1 | Based on 30+ years of accident free operation |
| | Consequence | 4 | Based on fact that one vessel berthed and likely without passengers |
| | Risk | 4 | |
| 2-E Allision Ex. Vessels ⁽²⁾ | Likelihood | 1 | Based on 30+ years of accident free operation |
| | Consequence | 4 | Based on fact that one vessel berthed and likely without passengers |
| | Risk | 4 | |
| 2-F Allision Const. Equip. ⁽¹⁾ | Likelihood | 0 | No construction case |
| | Consequence | 4 | Based on fact that one vessel berthed and likely without passengers |
| | Risk | 0 | |
| 2-G Allision Const. Equip. ⁽²⁾ | Likelihood | 0 | No construction case |
| | Consequence | 4 | |
| | Risk | 0 | |
| 3-A Wave Damage | Likelihood | 1 | Site relatively protected from waves |
| | Consequence | 3 | Limited to minor damage |
| | Risk | 3 | |

- (1) Ferry and/or *Spirit of the Sound* berthed
- (2) Ferry and/or *Spirit of the Sound* in transit



2.7.2. Berthing Option A (During Construction)

Table 10: Risk Ranking – Berthing Option A (During Construction)

| Hazard | Ranking | | Notes |
|---|-------------|----|---|
| 1-A Collision Recreational | Likelihood | 2 | Increased from baseline case due to increased traffic / congestion Based on injury / damage for like sized vessels |
| | Consequence | 4 | |
| | Risk | 8 | |
| 1-B Collision Paddlecraft | Likelihood | 2 | Increased from baseline case due to increased traffic / congestion Based on injury / damage for disproportionally sized vessels |
| | Consequence | 5 | |
| | Risk | 10 | |
| 1-C Collision Commercial | Likelihood | 2 | Increased from baseline case due to increased traffic / congestion Based on injury / damage for disproportionally sized vessels |
| | Consequence | 5 | |
| | Risk | 10 | |
| 1-D Collision Const. Equip. | Likelihood | 2 | Based on amount of vessels / equip. maneuvering between bridges Based on injury / damage for disproportionally sized vessels |
| | Consequence | 5 | |
| | Risk | 10 | |
| 2-A Allision Vessel dock | Likelihood | 3 | Increased from baseline due to tighter maneuvering and increased traffic Low speed docking maneuvering would limit impact damage |
| | Consequence | 2 | |
| | Risk | 6 | |
| 2-B Allision Adj marina | Likelihood | 0 | No adjacent marina at Site 1 Low speed docking maneuvering would limit impact damage |
| | Consequence | 2 | |
| | Risk | 0 | |
| 2-C Allision Stroffolino Br | Likelihood | 2 | Increased from baseline due to closer proximity of ferry to bridge Based on low speed maneuvering and presence of bridge fendering |
| | Consequence | 3 | |
| | Risk | 6 | |
| 2-D Allision Ex. Vessels ⁽¹⁾ | Likelihood | 2 | Increased from baseline case due to increased traffic / congestion Based on fact that one vessel berthed and likely without passengers |
| | Consequence | 4 | |
| | Risk | 8 | |
| 2-E Allision Ex. Vessels ⁽²⁾ | Likelihood | 1 | Same as baseline case as there is no other berthing in Site 1 location Based on fact that one vessel berthed and likely without passengers |
| | Consequence | 4 | |
| | Risk | 4 | |
| 2-F Allision Const. Equip. ⁽¹⁾ | Likelihood | 2 | Based on increased traffic / congestion associated with construction Based on fact that one vessel berthed and likely without passengers |
| | Consequence | 4 | |
| | Risk | 8 | |
| 2-G Allision Const. Equip. ⁽²⁾ | Likelihood | 2 | Based on increased traffic / congestion associated with construction Consequence lower than 2-F due to smaller size of vessel in transit |
| | Consequence | 3 | |
| | Risk | 6 | |
| 3-A Wave Damage | Likelihood | 1 | Site relatively protected from waves Limited to minor damage |
| | Consequence | 3 | |
| | Risk | 3 | |

- (1) Ferry and/or *Spirit of the Sound* berthed
- (2) Ferry and/or *Spirit of the Sound* in transit



2.7.3. Berthing Option B (During Construction)

Table 11: Risk Ranking – Berthing Option B (During Construction)

| Hazard | Ranking | | Notes |
|---|-------------|---|---|
| 1-A Collision Recreational | Likelihood | 1 | Based on increased maneuvering room south of Stroffolino |
| | Consequence | 4 | Based on injury / damage for like sized vessels |
| | Risk | 4 | |
| 1-B Collision Paddlecraft | Likelihood | 1 | Based on increased maneuvering room south of Stroffolino |
| | Consequence | 5 | Based on injury / damage for disproportionally sized vessels |
| | Risk | 5 | |
| 1-C Collision Commercial | Likelihood | 1 | Based on increased maneuvering room south of Stroffolino |
| | Consequence | 5 | Based on injury / damage for disproportionally sized vessels |
| | Risk | 5 | |
| 1-D Collision Const. Equip. | Likelihood | 1 | Based on increased maneuvering room south of Stroffolino |
| | Consequence | 5 | Based on injury / damage for disproportionally sized vessels |
| | Risk | 5 | |
| 2-A Allision Vessel dock | Likelihood | 2 | Based on usage of vessels including multiple trips per day in season |
| | Consequence | 2 | Low speed docking maneuvering would limit impact damage |
| | Risk | 4 | |
| 2-B Allision Adj marina | Likelihood | 2 | Marinas located north and south of Option B site |
| | Consequence | 2 | Low speed docking maneuvering would limit impact damage |
| | Risk | 4 | |
| 2-C Allision Stroffolino Br | Likelihood | 0 | Site is south of Stroffolino. No need to transit bridge. |
| | Consequence | 3 | Based on low speed maneuvering and presence of bridge fendering |
| | Risk | 0 | |
| 2-D Allision Ex. Vessels ⁽¹⁾ | Likelihood | 1 | Based on increased maneuvering room south of Stroffolino |
| | Consequence | 4 | Based on fact that one vessel berthed and likely without passengers |
| | Risk | 4 | |
| 2-E Allision Ex. Vessels ⁽²⁾ | Likelihood | 2 | Based on increased maneuvering room south of Stroffolino but also factoring additional marina berthing adjacent to Option B berth |
| | Consequence | 3 | Based on fact that one vessel berthed and likely without passengers |
| | Risk | 6 | |
| 2-F Allision Const. Equip. ⁽¹⁾ | Likelihood | 1 | Based on increased maneuvering room south of Stroffolino |
| | Consequence | 4 | Based on fact that one vessel berthed and likely without passengers |
| | Risk | 4 | |
| 2-G Allision Const. Equip. ⁽²⁾ | Likelihood | 0 | No staged construction equipment south of bridge near Option B dock |
| | Consequence | 3 | Consequence lower than 2-F due to smaller size of vessel in transit |
| | Risk | 0 | |
| 3-A Wave Damage | Likelihood | 2 | Increase wave exposure when compared to Option A dock |
| | Consequence | 3 | Limited to minor damage |
| | Risk | 6 | |

- (1) Ferry and/or *Spirit of the Sound* berthed
- (2) Ferry and/or *Spirit of the Sound* in transit



2.7.4. Risk Ranking Summary

Table 12: Risk Ranking Summary

| Hazard | Hazard ID | Hazard Description | Risk Ranking by Scenario | | |
|---|-----------|---|--------------------------------------|---|---|
| | | | Current Operations (No Construction) | Berthing Option A (During Construction) | Berthing Option B (During Construction) |
| Collision⁽¹⁾ Between Ferry or <i>Spirit of the Sound</i> and.... | 1-A | Recreational vessels | 4 | 8 | 4 |
| | 1-B | Rowing shells and other paddlecraft | 5 | 10 | 5 |
| | 1-C | Commercial vessels | 5 | 10 | 5 |
| | 1-D | Walk Bridge marine construction equipment | 0 | 10 | 5 |
| Allision⁽²⁾ Between Ferry or <i>Spirit of the Sound</i> and.... | 2-A | Vessel dock | 4 | 6 | 4 |
| | 2-B | Adjacent marina structures | 0 | 0 | 4 |
| | 2-C | Stroffolino Bridge | 3 | 6 | 0 |
| | 2-D | Other vessels (recreational, rowing, commercial). Ferry or <i>Spirit of the Sound</i> berthed, other vessels in transit. | 4 | 8 | 4 |
| | 2-E | Other vessels (recreational, rowing, commercial). Ferry or <i>Spirit of the Sound</i> in transit, other vessels berthed. | 4 | 4 | 6 |
| | 2-F | Walk Bridge marine construction equipment. Ferry or <i>Spirit of the Sound</i> berthed, construction equipment in transit. | 0 | 8 | 4 |
| | 2-G | Walk Bridge marine construction equipment. Ferry or <i>Spirit of the Sound</i> in transit, construction equipment stationary. | 0 | 6 | 0 |
| Wave Damage | 3-A | Damage to vessels while berthed due to wind-waves. | 3 | 3 | 6 |



2.8. Conclusion

It has been documented in the Long Island Sound PAWSA workshop that this section of the Norwalk River is subject to congestion. Additional commercial marine traffic associated with the Walk Bridge construction project will add to the congestion in this area. While this area of the river has been noted to be congested, discussions with the Harbor Commission consultant and the vessel operators have indicated that there has not been a maritime accident associated with the Ferry or Aquarium vessels for their 30+ years of operation. Operator experience, licensing, and training is likely a primary factor in this track record of safety. Awareness of these facts is critical in developing strategies to best manage and mitigate risks when determining the most appropriate location for the Ferry and the *Spirit of the Sound*.

It is understood that the vessel operators would prefer to remain north of the Stroffolino Bridge for operational purposes. It is further understood that the vessel Captains of the Ferry and *Spirit of the Sound* are satisfied with the Option A berthing as verified with a vessel berthing test on June 17, 2020.

While remaining north of the Stroffolino Bridge in the Berthing Option A scenario is the preference of the operators it does represent a higher risk location in several hazard categories based on the Navigation Safety Risk Assessment when compared to Berthing Option B. The primary risk concern in this location is related to collision impact between subject vessels and construction support equipment. If this location was selected then it is recommended that a risk reduction plan be developed with coordination between operators, construction contractor, Harbormaster, and other appropriate parties. Components of this plan should include:

- Regularly scheduled coordination meetings
- Minimum licensing and training requirements
- Communication procedures

Relocating the subject vessels to the Berthing Option B location would reduce certain risks for a number of hazards by providing more maneuvering room and eliminating the transit of the Stroffolino Bridge for each inbound and outbound legs. However, there would be some increased risks at this site due to proximity of adjacent marinas and increased exposure to waves. It is understood that operator preference, logistical matters related to passenger access, and economic considerations do not favor this option.



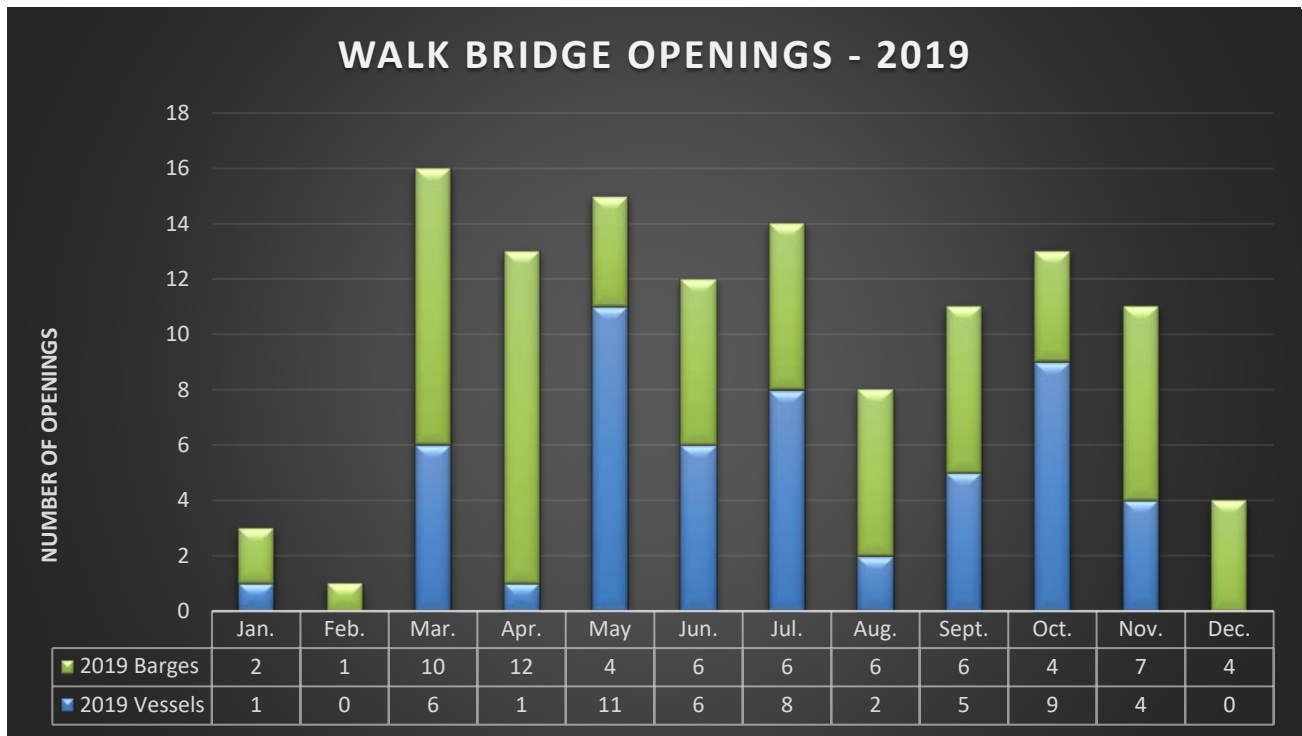
3. Section B – Overview of Interaction Between Existing River Users and Proposed Contractor Activities

As part of the scope of services, RACE also reviewed the potential interaction between existing river users and contractor construction support vessels in the area of concern between the Stroffolino and Walk Bridges. The Norwalk River is an active waterway supporting many commercial and recreational uses. A Federal Channel exists along this stretch of river.

As noted in Section 1, the Port and Waterway Safety Assessment (PAWSA) Workshop Report for Long Island Sound indicated that the Norwalk Channel was a concern related to its congestion. Careful consideration of vessel traffic, both ongoing river traffic as well as increased traffic associated with the Walk Bridge is necessary to provide for safe access during construction activities.

Review of 2019 Walk Bridge Opening Logs by Metro North Railroad (included as Appendix A) indicate that a total of 121 openings were conducted in the calendar year. The Chart below shows openings by month and watercraft type (ie vessel or barge). Note that this is not a full indicator of traffic transiting this reach as smaller powerboats and crew shells do not require bridge openings.

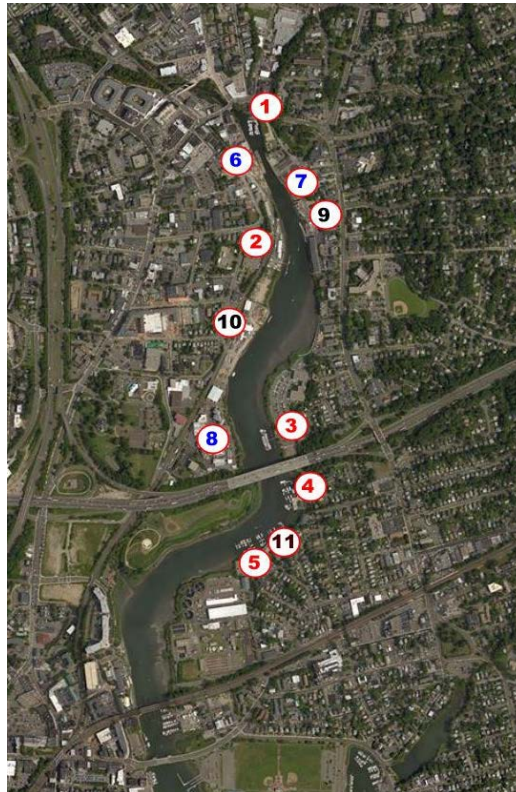
Figure 5: Walk Bridge Openings - 2019



3.1. Existing River Users

The following figure indicates location of facilities that support water-dependent activities north of the Walk Bridge. These facilities can broadly be classified by the types of vessels that access them. Specifically, these vessels include commercial (tugs, barges), recreational (powerboats, sailboats), and rowing (single, double, four, and eight person shells). It is important to note that 11 water-dependent facilities are located north of the Walk Bridge that require transit past the work area in order to access Long Island Sound.

Figure 6: Existing Waterfront Users North of Walk Bridge



| Site Number | Name | Vessel Access / Use |
|-------------|------------------------|---------------------|
| 1 | Norwalk Boat Club | Recreational |
| 2 | United Marine Boatyard | Recreational |
| 3 | St. Ann's Club | Recreational |
| 4 | Shore Points Marina | Recreational |
| 5 | Greyrock Marina | Recreational |
| 6 | Devine Brothers | Commercial |
| 7 | O&G Industries | Commercial |
| 8 | King Industries | Commercial |
| 9 | Norwalk Rowing Club | Rowing |
| 10 | Maritime Rowing | Rowing |
| 11 | Connecticut Boat Club | Rowing |



3.1.1. Recreational

The following table indicates water-dependent facilities supporting recreational vessels located north of the Walk Bridge and includes an estimate for number of slips based on aerial photograph research.

Table 13: Recreational Marinas North of Walk Bridge

| Marina | Est. Number of Slips |
|-------------------------|-----------------------------|
| Norwalk Boat Club | 30 |
| United Marina Boatyard | 6 |
| St. Ann's Club | 36 |
| Shore Points Marina | 45 |
| Greyrock Marina | 65 |
| Est. Total Slips | 182 |

Based on our knowledge of Norwalk Harbor and marina usage in general it is likely that vessel using these facilities are primarily transiting past the Walk Bridge area to the waters of Long Island Sound during the New England boating season from May to September.

Per review of Navigation Study by HNTB (Ref. 1) it is understood that the boats berthed at these facilities include both powerboats and sailboats. Larger powerboats and sailboats would require bridge openings at Walk and Strofollino Bridges to allow for transit.

3.1.2. Commercial

There are three commercial port facilities located north of the Walk Bridge. These include Devine, O&G, and King Industries. Currently of these three, only Devine and O&G actively receive product via tug / barge which includes aggregate and other earth products.

Based on the 2019 Metro-North data, barges transit the Walk Bridge every month.

3.1.3. Rowing and Paddlecraft

There are three rowing clubs located north of the Walk Bridge. These include Norwalk Rowing Club, Maritime Rowing Club, and Connecticut Boat Club. These are active clubs that offer members the ability to row during the season which commonly extends from May to October. Rowing shells are commonly escorted by a coach launch. Neither the rowing shells nor the coach launches would require bridge openings.

In addition to organized rowing activities the use of paddleboards and kayaks has been observed in the project vicinity.

3.2. Proposed Contractor Vessels

According to the presentation prepared by CMJV to the Norwalk Harbor Management Commission on August 26, 2020 (Ref. 6) the size and types of assets that may be involved in construction are as follows:

- Barges:
 - Typical crane barge (72'x54')
 - Typical material barge (120'x50')

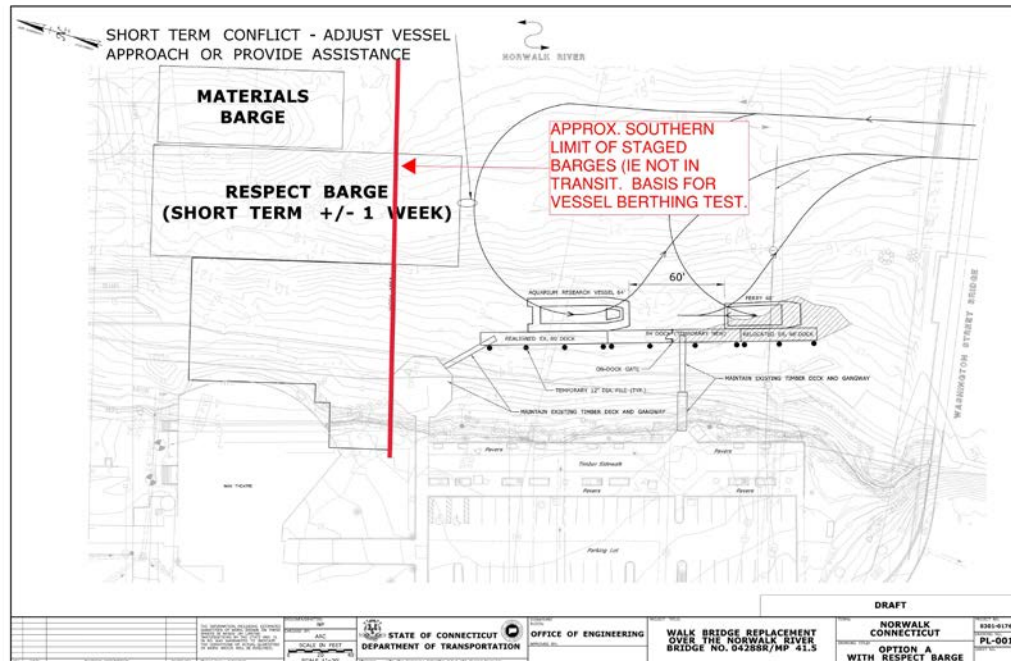


- Additional barges ranging in size from 90'x30' to 280'x54'
- Vessels:
 - Tugboat (14'x40')
 - Pushboat / Safety Boats (8'x20')

Based on review of the CMJV presentation and discussions with the contractor, it is understood that crane barges will be staged at the Walk Bridge sites and will rarely transit past the Ferry or *Spirit of the Sound* except for when initially accessing the Walk Bridge. In contrast, material barges would likely be transiting twice per day (once northbound and once southbound). Various small craft including pushboats and safety boats would more frequently transit the area adjacent to the subject vessel berths but are not anticipated to impact vessel operations.

It is understood that except for rare circumstances, construction equipment is anticipated to be staged north of the line shown in the figure below:

Figure 7: Typical Barge Location Plan (from CTDOT - Ref. 3)



Temporary staging of contractor equipment south of this limit may occur on a short-term basis including during dredging or placement of spans for new bridge.

3.3. Interaction between Vessels

3.3.1. Existing operations

Currently there are a number of uses coexisting in this reach of the Norwalk River. These include 20' – 40' pleasure craft accessing marinas located north of Walk Bridge, barges ranging in length from 70' to 280' delivering earth products to Devine and O&G, and rowing activities on crew shells with attendant coach launches.

Barges, larger powerboats, and sailboats all require bridge openings at the Stroffolino and Walk Bridges to transit this area.



This diversity and density of uses requires awareness of all operators particularly when in the confined areas bounded by the Stroppolino and Walk Bridges.

Based on discussions with operators of Ferry and *Spirit of the Sound*, as well as, with consultant to the Harbor Management Commission, RACE is unaware of any maritime accident in the project vicinity.

3.3.2. During construction

During construction activities congestion in the immediate vicinity of the Walk Bridge will increase with the construction of four access trestles on each side of the bridge and construction barges staged in various locations.

It is understood that there will be demolition and construction sequence used with due consideration for best maintaining access to vessel traffic. As part of the HMC presentation, CMJV prepared a gantt chart showing construction schedule with associated channel restrictions. This chart is included in Appendix B for reference.

During construction, at least one navigational channel is anticipated to be blocked for the duration of the project. In addition, there will be shorter periods of time with further channel restrictions. For time periods indicated by the orange bars, the bridge will not be able to be raised and navigation will be limited to vessels with an air draft that can clear under the new bridge. For time periods indicated by the green bars, the channel would be completely closed.

While it is understood that best efforts are being made in planning to limit impacts to navigation it is clear from the chart above that impacts will to navigation due to the construction activities.

3.4. Mitigation Strategies

It is necessary for stakeholders involved in navigation, navigation safety, and regulatory matters pertaining to the subject area to understand and appreciate the impacts that the five-year construction project will have on current vessel operations. In order to address issues that may present themselves due to these changes, it is recommended that the following strategies be considered prior to and during construction.

- ***Enhanced communication***

It is important for mariners transiting this area to know what activities are ongoing and what restrictions are in place. While the five-year gantt chart with channel restrictions is a great tool to ascertain overall impacts to navigation over the life of the project, it does not necessarily help a mariner that is planning to transit the Walk Bridge channel on a given day. It is recommended that a website be created that could show weekly channel restrictions and provide a point of contact for anyone who may be planning to transit the area.

- ***Traffic Controls***

With only one of the two navigation channels accessible during a majority of construction activities the possibility exists for head on collisions due to inadequate channel width for two way traffic. It is recommended that a system be developed, communicated, and implemented that would best ensure traffic would not meet head on in the restricted channel area. Such a system could include; 1) certain time of day restrictions for northbound versus southbound traffic; 2) a traffic light indicating when it is safe to transit; or 3) traffic control personnel managing flow of vessels on VHF Channel 13.



- *Enhanced Safety Procedures*

It is recommended that safety procedures be developed in order to be able to rapidly respond if there is a navigation safety incident at the Walk Bridge site. Such procedures could include maintaining a safety boat and trained safety personnel at the project site. It is likely that the contractor will maintain some level of safety boat for their operations. Expanding the role of this safety boat / crew to respond to issues that may present themselves associated with marine traffic transiting the project area may be prudent.

3.5. Conclusion

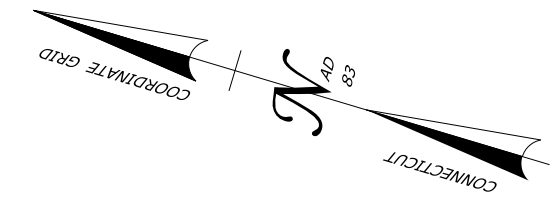
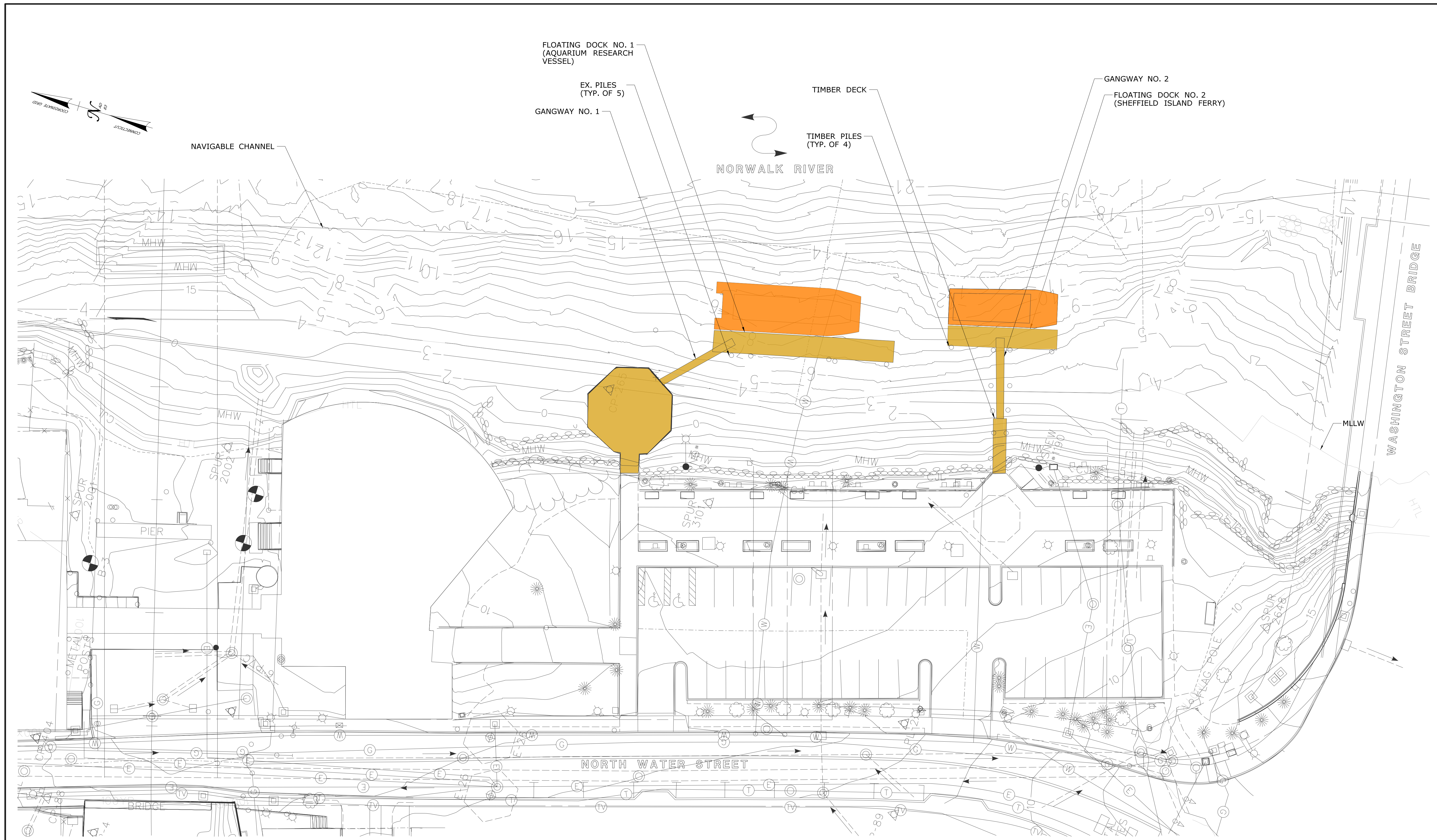
The project area in the vicinity of the Walk Bridge includes a busy navigation channel serving a wide variety of uses. With this wide variety of uses comes a wide variety of skills and training for rules of the road and navigation safety. Furthermore, the disparity in size of vessels transiting this section of river can range from 280' steel hulled barges to 20' carbon rowing shells. Collisions between such disparate craft could have tragic consequences.

The Walk Bridge project is estimated at a five-year duration and at best will limit channel width and at worst will close the channel during construction. Close coordination between stakeholders during construction is critical from both a safety and operational perspective.



Appendix A
Existing Condition and Proposed Relocation Drawings





FLOATING DOCK NO. 1
(AQUARIUM RESEARCH VESSEL)

EX. PILES
(TYP. OF 5)

GANGWAY NO. 1

TIMBER DECK

TIMBER PILES
(TYP. OF 4)

NORWALK RIVER

GANGWAY NO. 2

FLOATING DOCK NO. 2
(SHEFFIELD ISLAND FERRY)

NAVIGABLE CHANNEL

WASHINGTON STREET BRIDGE

NORTH WATER STREET

DRAFT

| REV. | DATE | REVISION DESCRIPTION | SHEET NO. | Plotted Date: \$DATES |
|------|------|----------------------|-----------|-----------------------|
| | | | | |

THE INFORMATION, INCLUDING ESTIMATED QUANTITIES OF WORK SHOWN ON THESE SHEETS IS BASED ON LIMITED INVESTIGATIONS BY THE STATE AND IS IN NO WAY WARRANTED TO INDICATE THE CONDITIONS OF ACTUAL QUANTITIES OF WORK WHICH WILL BE REQUIRED.

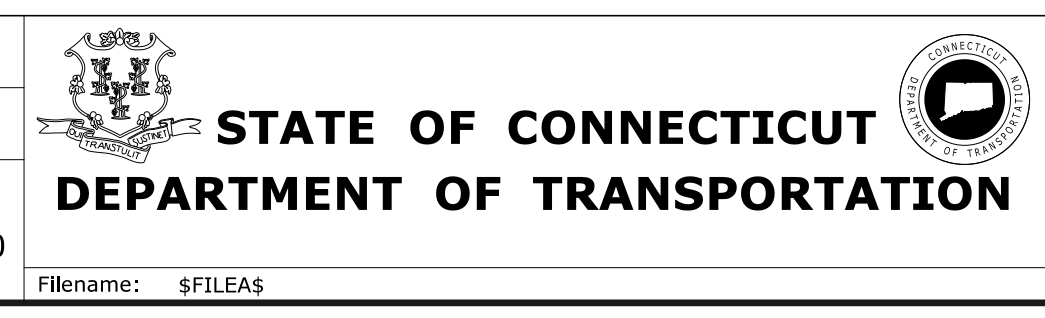
DESIGNER/DRAFTER: **NP**

CHECKED BY: **AAC**

SCALE IN FEET

0 20 40

SCALE 1"=20'



SIGNATURE/BLOCK:

PROJECT TITLE:

WALK BRIDGE REPLACEMENT OVER THE NORWALK RIVER BRIDGE NO. 04288R/MP 41.5

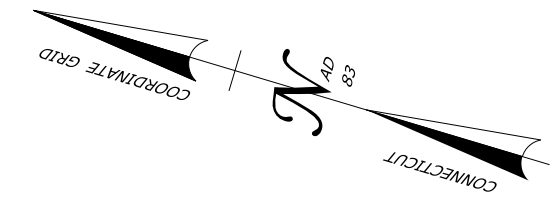
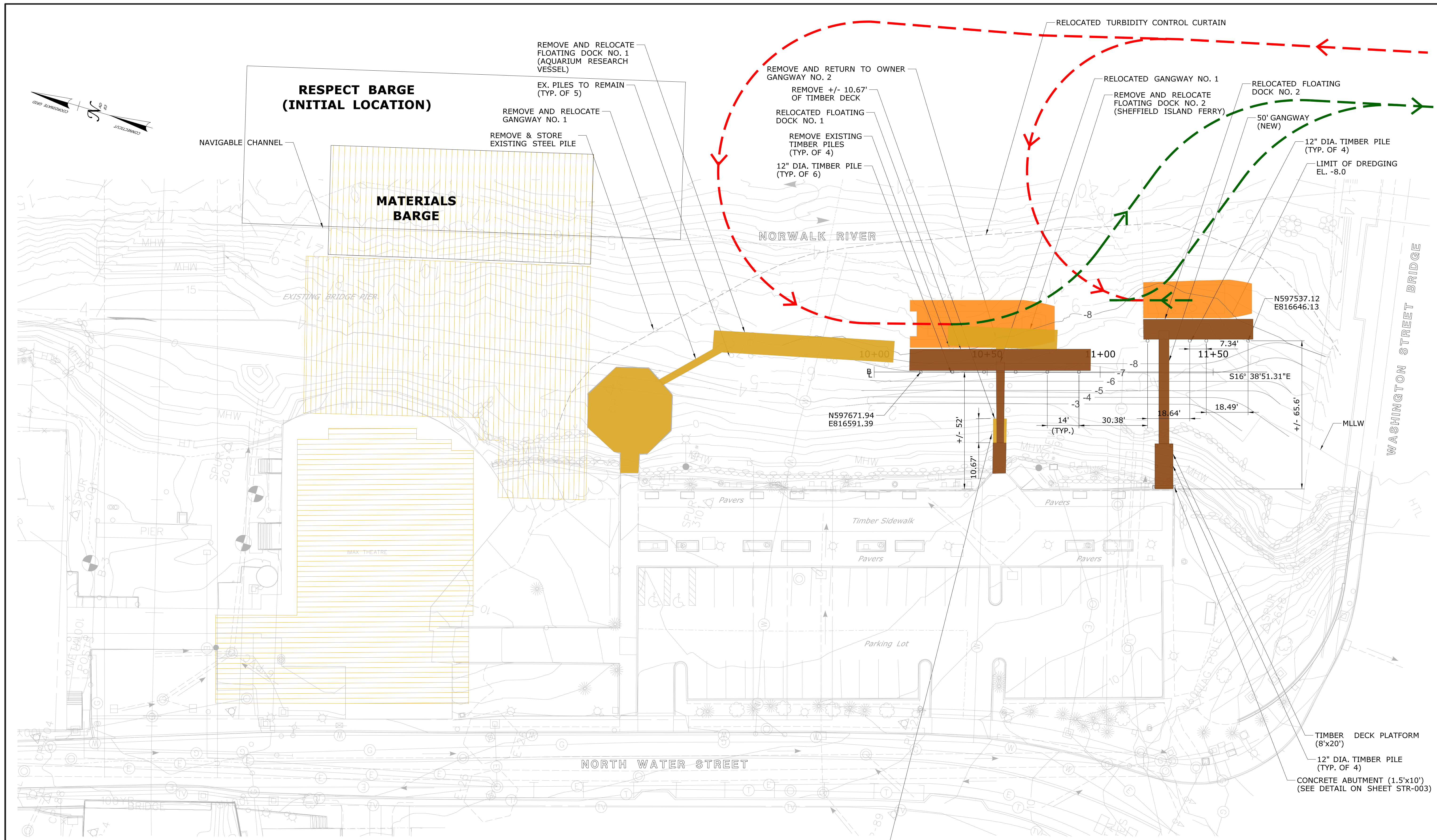
TOWN: **NORWALK CONNECTICUT**

DRAWING TITLE: **SITE PLAN EXISTING CONDITIONS**

PROJECT NO. **0301-0176**

DRAWING NO. **PL-001**

SHEET NO.

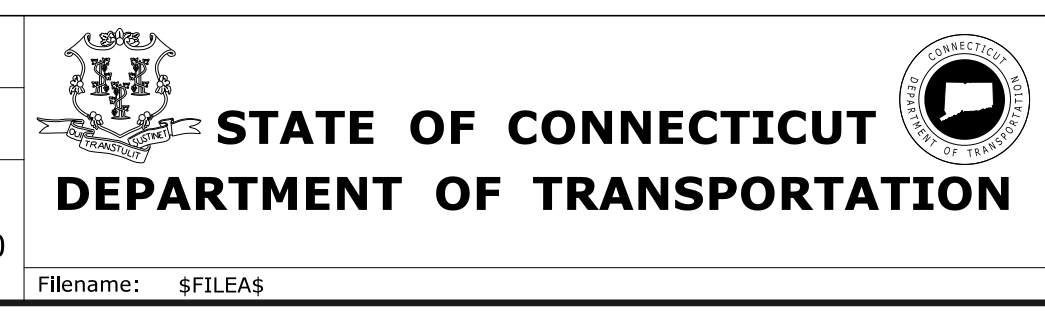


DRAFT

| REV. | DATE | REVISION DESCRIPTION | SHEET NO. | Plotted Date: \$DATES |
|------|------|----------------------|-----------|-----------------------|
| | | | | |

THE INFORMATION, INCLUDING ESTIMATED QUANTITIES OF WORK, SHOWN ON THESE SHEETS IS BASED ON LIMITED INVESTIGATIONS BY THE STATE AND IS IN NO WAY WARRANTED TO INDICATE THE CONDITIONS OF ACTUAL QUANTITIES OF WORK WHICH WILL BE REQUIRED.

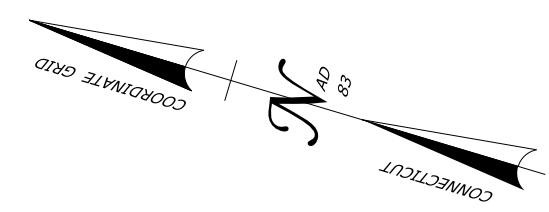
DESIGNER/DRAFTER: **NP**
 CHECKED BY: **AAC**
 SCALE IN FEET
 0 20 40
 SCALE 1"=20'



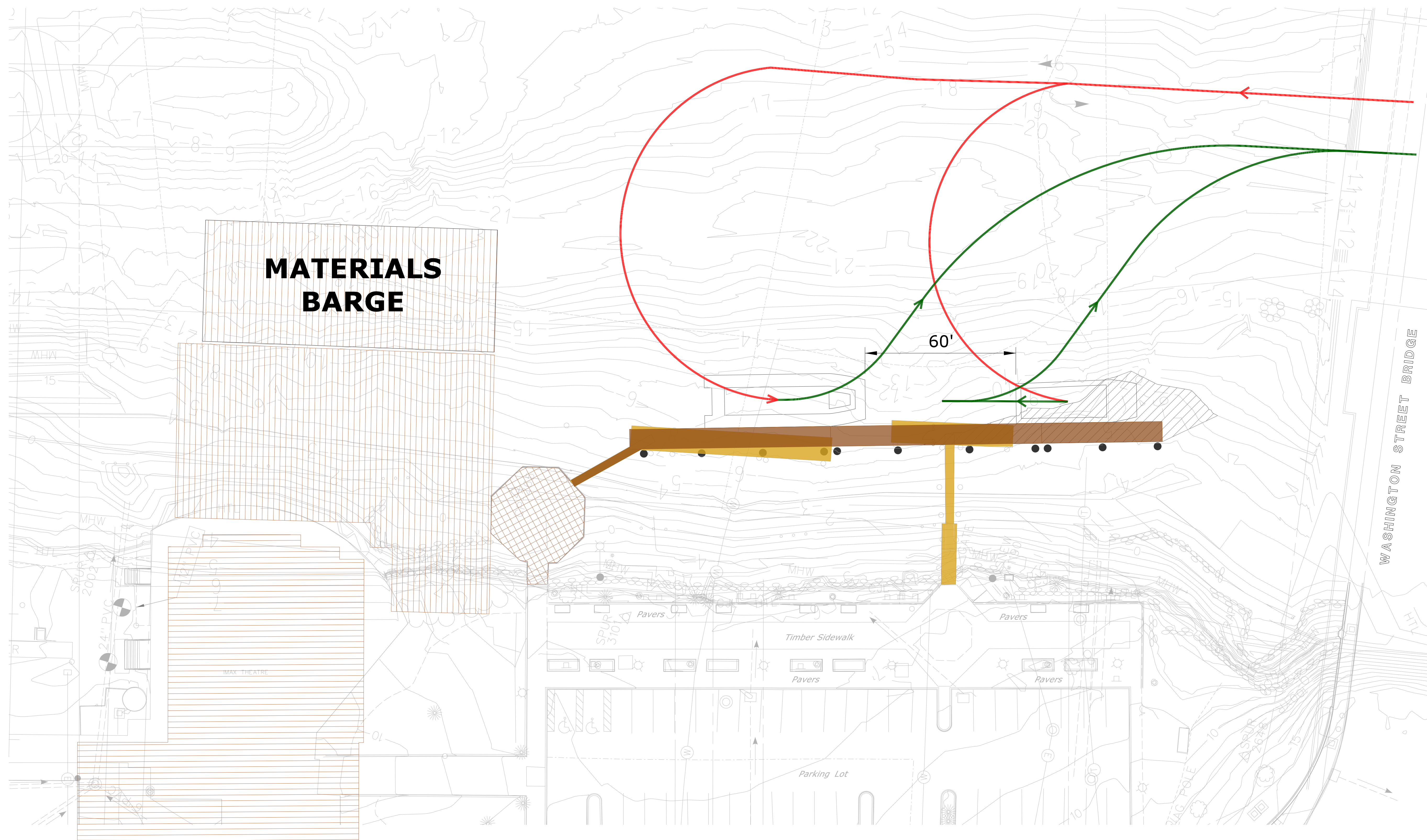
SIGNATURE/BLOCK:
 PROJECT TITLE:
WALK BRIDGE REPLACEMENT OVER THE NORWALK RIVER BRIDGE NO. 04288R/MP 41.5

TOWN: **NORWALK**
 DRAWING TITLE:
SITE PLAN TEMPORARY RELOCATION

PROJECT NO. **0301-0176**
 DRAWING NO. **PL-001**
 SHEET NO.



NORWALK RIVER

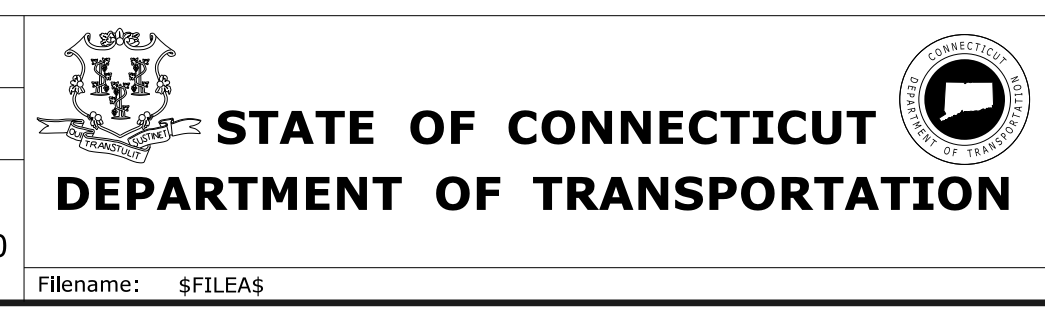


DRAFT

| REV. | DATE | REVISION DESCRIPTION | SHEET NO. | Plotted Date: \$DATES |
|------|------|----------------------|-----------|-----------------------|
| | | | | |

THE INFORMATION, INCLUDING ESTIMATED QUANTITIES OF WORK, SHOWN ON THESE SHEETS IS BASED ON LIMITED INVESTIGATIONS BY THE STATE AND IS IN NO WAY WARRANTED TO INDICATE THE CONDITIONS OF ACTUAL QUANTITIES OF WORK WHICH WILL BE REQUIRED.

DESIGNER/DRAFTER: NP
 CHECKED BY: AAC
 SCALE IN FEET
 0 20 40
 SCALE 1"=20'

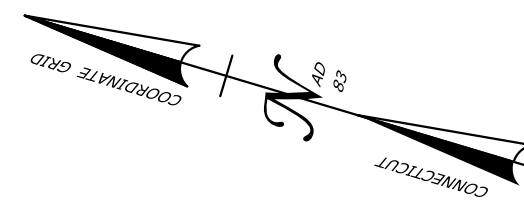


SIGNATURE/BLOCK:
OFFICE OF ENGINEERING
 APPROVED BY:

PROJECT TITLE:
**WALK BRIDGE REPLACEMENT
 OVER THE NORWALK RIVER
 BRIDGE NO. 04288R/MP 41.5**

TOWN:
**NORWALK
 CONNECTICUT**
 DRAWING TITLE:
SITE PLAN - OPTION A

PROJECT NO.
0301-0176
 DRAWING NO.
PL-001
 SHEET NO.

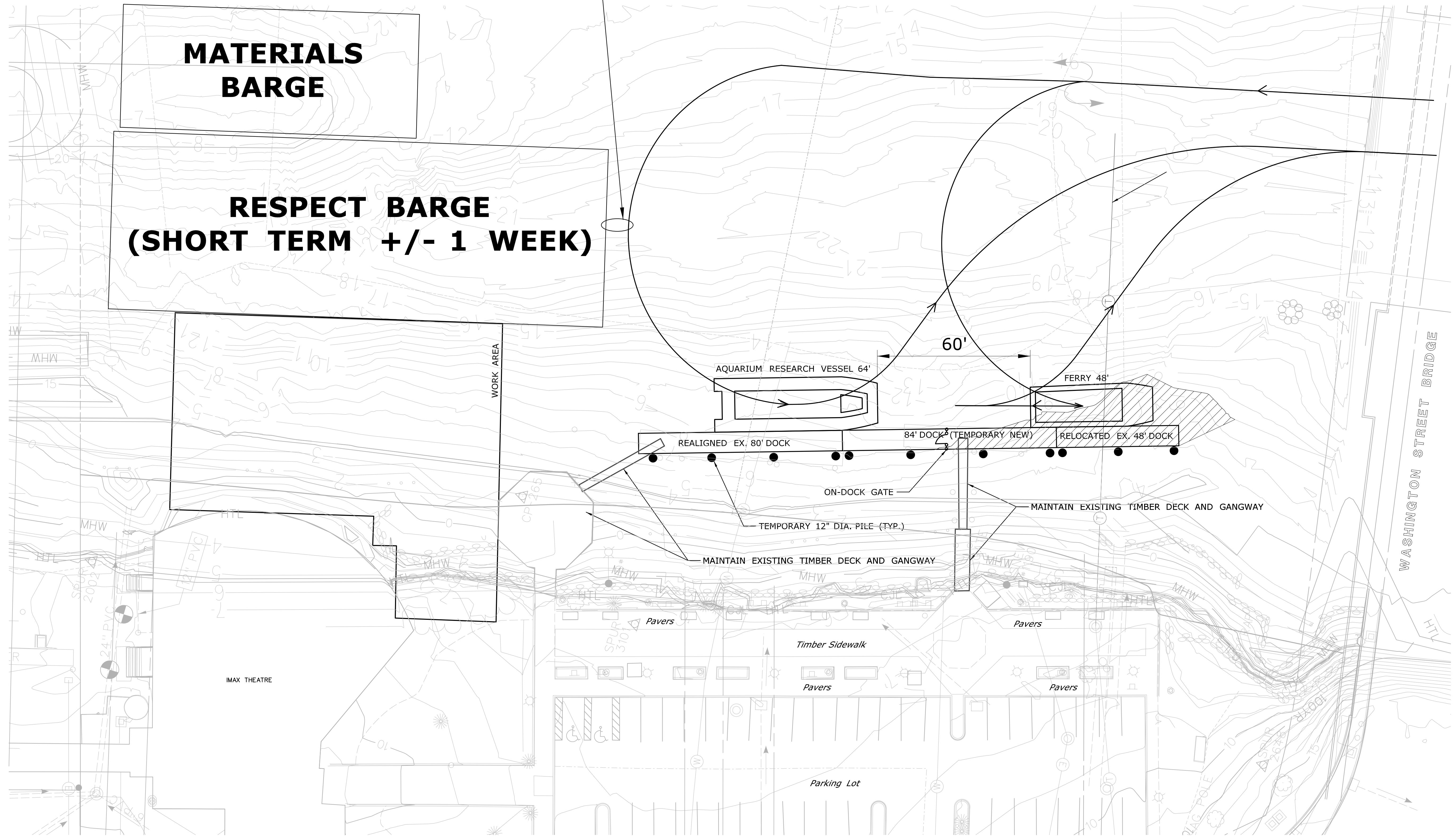


SHORT TERM CONFLICT - ADJUST VESSEL APPROACH OR PROVIDE ASSISTANCE

NORWALK RIVER

MATERIALS BARGE

RESPECT BARGE (SHORT TERM +/- 1 WEEK)



DRAFT

| REV. | DATE | REVISION DESCRIPTION | SHEET NO. |
|------|------|----------------------|-----------|
| | | | |

THE INFORMATION, INCLUDING ESTIMATED QUANTITIES OF WORK, SHOWN ON THESE SHEETS IS BASED ON LIMITED INVESTIGATIONS BY THE STATE AND IS IN NO WAY WARRANTED TO INDICATE THE CONDITIONS OF ACTUAL QUANTITIES OF WORK WHICH WILL BE REQUIRED.

Plotted Date: 4/22/2020

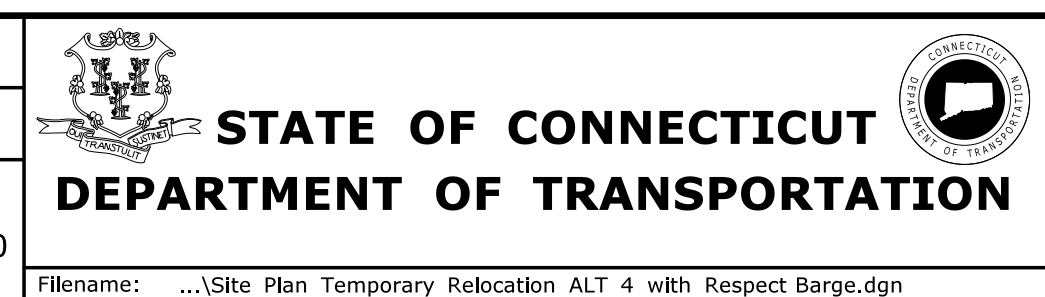
DESIGNER/DRAFTER:
NP

CHECKED BY:
AAC

SCALE IN FEET

0 20 40

SCALE 1"=20'



SIGNATURE/
BLOCK:

OFFICE OF ENGINEERING

APPROVED BY:

PROJECT TITLE:

**WALK BRIDGE REPLACEMENT
OVER THE NORWALK RIVER
BRIDGE NO. 04288R/MP 41.5**

TOWN:

**NORWALK
CONNECTICUT**

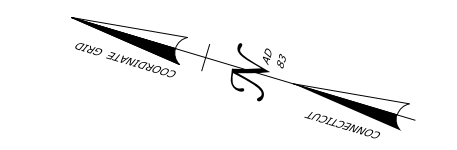
DRAWING TITLE:

**OPTION A
WITH RESPECT BARGE**

PROJECT NO.
0301-0176

DRAWING NO.
PL-001

SHEET NO.

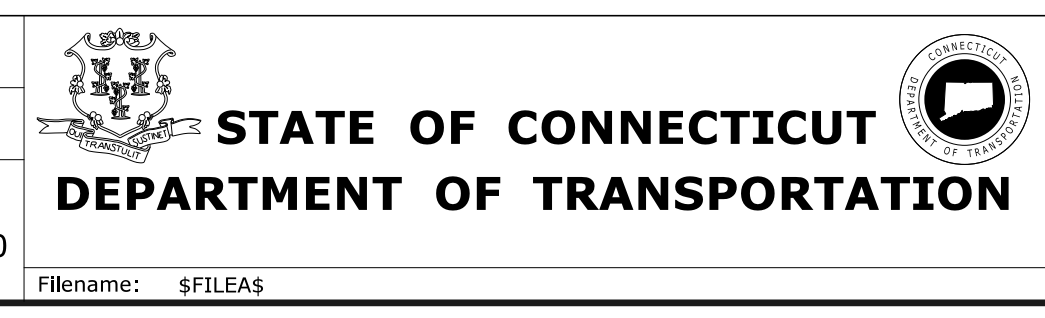


DRAFT

| REV. | DATE | REVISION DESCRIPTION | SHEET NO. | Plotted Date: \$DATES |
|------|------|----------------------|-----------|-----------------------|
| | | | | |

THE INFORMATION, INCLUDING ESTIMATED QUANTITIES OF WORK, SHOWN ON THESE SHEETS IS BASED ON LIMITED INVESTIGATIONS BY THE STATE AND IS IN NO WAY WARRANTED TO INDICATE THE CONDITIONS OF ACTUAL QUANTITIES OF WORK WHICH WILL BE REQUIRED.

DESIGNER/DRAFTER:
NP
CHECKED BY:
AAC
SCALE IN FEET
0 15 30
SCALE 1"=30'



SIGNATURE/
BLOCK:

PROJECT TITLE:
**WALK BRIDGE REPLACEMENT
OVER THE NORWALK RIVER
BRIDGE NO. 04288R/MP 41.5**

TOWN:
**NORWALK
CONNECTICUT**
DRAWING TITLE:
SITE PLAN - OPTION B

PROJECT NO.
DRAWING NO.
PL-001
SHEET NO.

Appendix B
Metro-North Bridge Opening Records (2019)



CHIEF RAIL TRAFFIC CONTROLLER'S LOG

Bridge Open Request

Request Open Dates: 1/1/2019 To: 12/31/2019

| <u>TIME</u> | <u>HARMON</u> | <u>POUGHKEEPSIE</u> | <u>NWP</u> | <u>BREWSTER</u> | <u>STAMFORD</u> | <u>NEW HAVEN</u> |
|-------------|---------------|---------------------|------------|-----------------|-----------------|------------------|
| 01:00 | Cloudy 18 | Cloudy 16 | Cloudy 20 | Cloudy 14 | Cloudy 19 | Cloudy 18 |
| 07:00 | Clear 19 | Clear 18 | Clear 20 | Clear 14 | Clear 18 | Clear 19 |
| 13:00 | Clear 29 | Clear 25 | Clear 27 | Clear 25 | Clear 29 | Clear 29 |
| 19:00 | Clear 26 | Clear 24 | Clear 25 | Clear 23 | Clear 26 | Clear 26 |

2019-0126-B001

Status: CANCELLED

Incident Type: BRIDGE INCIDENT LOG
 Bridge: Walk Bridge
 Request: 1/27/2019 2:30:00AM

Vessel: MR. T
 Contact: (757) 805-1665
 Notified: YES

Date & Time Incident Comments

01/26/2019 11:45 IN 0230hrs/OUT 0330hrs.

Email sent.

01/26/2019 19:52 Bridge opening has been cancelled.

01/26/2019 20:00 The following were notified of cancellation for both openings at 0230 and 0330hrs.: Trouble Desk - John ntfd., Power Director - McConnell, Quinn, Melillo and Bridge Opr. Devon ntfd.

01/27/2019 07:03 Status: CLOSE - Bridge Open Incident: CLOSE

2019-0127-B001

Status: CLOSED

Incident Type: BRIDGE INCIDENT LOG
 Bridge: Walk Bridge
 Request: 1/27/2019 2:45:00PM

Vessel: MR. T
 Contact: (757) 805-1665
 Notified: YES

Date & Time Incident Comments

01/27/2019 08:14 1445 IN/ 1545 OUT. EMAIL SENT

01/28/2019 06:35 Status: CLOSE - Bridge Open Incident: CLOSE

2019-0125-B001

Status: CLOSED

Incident Type: BRIDGE INCIDENT LOG
 Bridge: Walk Bridge
 Request: 1/28/2019 10:00:00AM

Vessel: FRA TESTING
 Contact: (212) 340-4167
 Notified: YES

Date & Time Incident Comments

01/25/2019 14:06 Sean Quinn is out of office. Email sent. Mike Bunnell made the bridge opening 4167.

01/28/2019 10:26 Bridge is open.

01/28/2019 10:46 Bridge has been closed.

01/28/2019 10:47 Status: CLOSE - Bridge Open Incident: CLOSE

2019-0221-B001

Status: CLOSED

Incident Type: BRIDGE INCIDENT LOG
 Bridge: Walk Bridge
 Request: 2/22/2019 11:30:00AM

Vessel: MR. T
 Contact: (757) 805-1665
 Notified: YES

Date & Time Incident Comments

02/21/2019 20:40 2/21/19 at 2030hrs: Mr. T called stating he wanted a bridge opening on 2/22 at 1130hrs and 1230hrs. Email has been sent through outlook.

 02/22/2019 13:53 Status: CLOSE - 1129 hrs Open, Closed 1137
 1329 hrs Open, Closed 1333

CHIEF RAIL TRAFFIC CONTROLLER'S LOG

Bridge Open Request

Request Open Dates: 1/1/2019 To: 12/31/2019

| | | |
|------------------------------------|-------------------------|-------------------|
| | 2019-0303-B001 | Status: CANCELLED |
| Incident Type: BRIDGE INCIDENT LOG | Vessel: MR. T | |
| Bridge: Walk Bridge | Contact: (757) 805-1665 | |
| Request: 3/3/2019 8:30:00PM | Notified: YES | |

Date & Time Incident Comments

03/03/2019 13:24 All parties ntfed.

03/03/2019 18:45 Vessel Mr. T called and cancelled bridge opening. All parties notified of cancellation.

03/04/2019 06:47 Status: CLOSE - Bridge Open Incident: CLOSE

| | | |
|------------------------------------|-------------------------|-------------------|
| | 2019-0303-B002 | Status: CANCELLED |
| Incident Type: BRIDGE INCIDENT LOG | Vessel: MR. T | |
| Bridge: Walk Bridge | Contact: (757) 805-1665 | |
| Request: 3/3/2019 9:30:00PM | Notified: YES | |

Date & Time Incident Comments

03/03/2019 13:24 All parties ntfed.

03/03/2019 18:46 Vessel Mr. T called and cancelled bridge opening. All parties notified of cancellation.

03/04/2019 06:47 Status: CLOSE - Bridge Open Incident: CLOSE

| | | |
|------------------------------------|-----------------------|----------------|
| | 2019-0304-B001 | Status: CLOSED |
| Incident Type: BRIDGE INCIDENT LOG | Vessel: MR. T | |
| Bridge: Walk Bridge | Contact: 561.369.0761 | |
| Request: 3/5/2019 9:00:00AM | Notified: YES | |

Date & Time Incident Comments

03/04/2019 21:50 Vessel Mr. T scheduled a bridge opening on March 5th at 0900hrs and 1030hrs. Call Walk Bridge and no one picked up. Delay Clerk notified.

03/05/2019 05:42 Delay Clerk Brooke advises Bridge Operator is notified of opening.

03/05/2019 10:47 Status: CLOSE - Bridge Open Incident: CLOSE

03/14/2019 07:45 Bridge opened on 03/05/19 at 0929hrs, Closed at 0943hrs.

| | | |
|------------------------------------|-------------------------|----------------|
| | 2019-0304-B002 | Status: CLOSED |
| Incident Type: BRIDGE INCIDENT LOG | Vessel: MR. T | |
| Bridge: Walk Bridge | Contact: (516) 369-0761 | |
| Request: 3/5/2019 10:30:00AM | Notified: YES | |

Date & Time Incident Comments

03/04/2019 21:53 Vessel Mr. T scheduled a bridge opening on March 5th at 0900hrs and 1030hrs. Call Walk Bridge and no one picked up. Delay Clerk notified.

03/05/2019 05:44 Delay Clerk Brooke advises Bridge Operator is notified of opening.

03/05/2019 11:33 Status: CLOSE - Bridge Open Incident: CLOSE

03/14/2019 07:45 Bridge opened on 03/05/19 at 1053hrs. and closed at 1114hrs.

| | | |
|------------------------------------|--------------------------|----------------|
| | 2019-0305-B001 | Status: CLOSED |
| Incident Type: BRIDGE INCIDENT LOG | Vessel: TEST OPENING-SE/ | |
| Bridge: Walk Bridge | Contact: (845) 340-2050 | |
| Request: 3/5/2019 12:43:00PM | Notified: YES | |

Date & Time Incident Comments

CHIEF RAIL TRAFFIC CONTROLLER'S LOG

Bridge Open Request

Request Open Dates: 1/1/2019 To: 12/31/2019

03/05/2019 12:49 Sean Quinn requested ASAP Opening.

03/05/2019 13:09 John Melillo spoke with the RTC and gave permission.

03/07/2019 12:51 Status: CLOSE - Opened at 1149hrs.
 Closed at 1210 hrs.
 Opened at 1341hrs.
 Closed at 1354hrs.

2019-0308-B001

Status: CLOSED

Incident Type: BRIDGE INCIDENT LOG Vessel: TESTING
 Bridge: Walk Bridge Contact: (203) 646-1727
 Request: 3/12/2019 12:30:00AM Notified: YES

Date & Time Incident Comments

03/08/2019 10:19 Sean Quinn made opening for testing. Email Bridge Group sent.

03/14/2019 23:20 On 03/12/2019 Walk Bridge was opened for Testing at 0148 hrs and closed at 0157 hrs.

2019-0316-B003

Status: CLOSED

Incident Type: BRIDGE INCIDENT LOG Vessel: MR. T
 Bridge: Walk Bridge Contact: (561) 369-0761
 Request: 3/16/2019 6:30:00PM Notified: YES

Date & Time Incident Comments

03/16/2019 12:36 Email sent to Bridge Group.

03/16/2019 18:25 Vessel has arrived on scene.

03/16/2019 18:42 RTC District F reports Walk Bridge is open.

03/16/2019 18:51 RTC District F reports opening is complete and derails are failing to normal.

03/16/2019 19:42 RTC District F reports able to normal derails and Walk Bridge is closed.

03/16/2019 21:55 Status: CLOSE - Reference Chief's Log: 2019-0316-0032

2019-0316-B001

Status: CLOSED

Incident Type: BRIDGE INCIDENT LOG Vessel: MR. T
 Bridge: Walk Bridge Contact: (561) 369-0761
 Request: 3/16/2019 7:30:00PM Notified: YES

Date & Time Incident Comments

03/16/2019 10:04 Email sent to Bridge Group, Walk Bridge-Bill ntfd.

03/16/2019 19:25 RTC District F reports the Vessel has arrived on scene.

03/16/2019 19:42 RTC District F reports Walk Bridge is closed.

03/16/2019 21:55 Status: CLOSE - Bridge Open Incident: CLOSE

03/18/2019 11:00 Walk Bridge was opened at 1842 hrs on 03/16/19.

2019-0316-B002

Status: CLOSED

Incident Type: BRIDGE INCIDENT LOG Vessel: BUCHANAN 5
 Bridge: Walk Bridge Contact: (516) 526-1795
 Request: 3/17/2019 7:00:00AM Notified: YES

Date & Time Incident Comments

03/16/2019 12:29 Email sent to Bridge group, LM for Sean Quinn on cell phone, Walk Bridge-Bill.

CHIEF RAIL TRAFFIC CONTROLLER'S LOG

Bridge Open Request

Request Open Dates: 1/1/2019 To: 12/31/2019

03/17/2019 07:13 Walk Bridge Opened.

03/17/2019 07:32 Walk Bridge Closed.

03/17/2019 07:34 Status: CLOSE - Bridge Open Incident: CLOSE

2019-0316-B004

Status: CLOSED

Incident Type: BRIDGE INCIDENT LOG Vessel: BUCHANAN 5
 Bridge: Walk Bridge Contact: (973) 985-6151
 Request: 3/17/2019 8:00:00AM Notified: YES

Date & Time Incident Comments

03/16/2019 12:38 Email sent to Bridge Group, Walk Bridge-Bill.

03/17/2019 08:55 Status: CLOSE - Opened 0821, Closed 0833. Log item 2019-0317-0013.

2019-0324-B001

Status: CLOSED

Incident Type: BRIDGE INCIDENT LOG Vessel: JULIANNE
 Bridge: Walk Bridge Contact: (757) 805-1665
 Request: 3/25/2019 1:30:00AM Notified: YES

Date & Time Incident Comments

03/24/2019 14:42 03/24/19 Vessel called to book two openings at 0130 and 0230hrs. on 3/25/19

03/25/2019 01:13 Vessel Julianne is on scene at Walk Bridge.

03/25/2019 01:30 RTC District F reports unable to open Walk Bridge account Bridge Operator is unavailable. Account same, Delay Clerk Valerie was notified and advises will follow up with same.

03/25/2019 01:40 Delay Clerk Valerie advises a Bridge Operator was contacted and is en-route with 60 minute ETA.

03/25/2019 02:21 Vessel Julianne is unable to wait for the arrival of the Bridge Operator at Walk Bridge and advises it is too risky to travel in regards to the tide. Account same, Bridge Operator was notified that the opening was cancelled.

03/25/2019 05:38 Status: CLOSE - Bridge Open Incident: CLOSE

2019-0324-B002

Status: CLOSED

Incident Type: BRIDGE INCIDENT LOG Vessel: JULIANNE
 Bridge: Walk Bridge Contact: (757) 805-1665
 Request: 3/25/2019 2:30:00AM Notified: YES

Date & Time Incident Comments

03/24/2019 14:45 03/24/19 Vessel called to book two openings at 0130 and 0230hrs. on 3/25/19.

03/25/2019 02:30 Vessel Julianne is unable to wait for the arrival of the Bridge Operator at Walk Bridge and advises it is too risky to travel in regards to the tide. Account same, Bridge Operator was notified that the opening was cancelled.

03/25/2019 05:38 Status: CLOSE - Bridge Open Incident: CLOSE

03/25/2019 06:35 Status: REOPEN - Bridge Open Incident: OPEN

03/25/2019 06:40 Status: RECLOSE - Bridge Open Incident: CLOSE

2019-0326-B001

Status: CANCELLED

Incident Type: BRIDGE INCIDENT LOG Vessel: JULIANNE
 Bridge: Walk Bridge Contact: (757) 805-1665
 Request: 3/26/2019 3:30:00PM Notified: YES

CHIEF RAIL TRAFFIC CONTROLLER'S LOG

Bridge Open Request

Request Open Dates: 1/1/2019 To: 12/31/2019

Date & Time Incident Comments

03/26/2019 10:31 Sent email to Bridge Group, Notified delay clerk-Jessica because no bridge operator answered

03/26/2019 10:55 Bridge Operator Bearswald was notified by Bob Dallaire.

03/26/2019 15:27 Walk Bridge called and said the Vessel Julianne cancelled the openings.

03/26/2019 15:36 Status: CLOSE - Bridge Open Incident: CLOSE

2019-0326-B002

Status: CANCELLED

| | | | |
|----------------|---------------------|-----------|----------------|
| Incident Type: | BRIDGE INCIDENT LOG | Vessel: | JULIANNE |
| Bridge: | Walk Bridge | Contact: | (757) 805-1665 |
| Request: | 3/26/2019 4:30:00PM | Notified: | YES |

Date & Time Incident Comments

03/26/2019 10:58 Bridge Maintainer Bearwald notified by Bob Dallaire. Email sent to bridge group.

03/26/2019 15:27 Walk Bridge called and said the Vessel Julianne cancelled the openings.

03/26/2019 15:37 Status: CLOSE - Walk Bridge called and said the Vessel Julianne cancelled the openings

2019-0330-B001

Status: CLOSED

| | | | |
|----------------|---------------------|-----------|----------------|
| Incident Type: | BRIDGE INCIDENT LOG | Vessel: | MR. T |
| Bridge: | Walk Bridge | Contact: | (516) 369-0761 |
| Request: | 3/31/2019 7:00:00PM | Notified: | YES |

Date & Time Incident Comments

03/30/2019 16:13 Bridge Operator Watley, Delay Clerk Brook and Mellilo were notified. Mellilo advises he would have to provide update tomorrow to see if conditions will permit for a bridge opening at Walk for 1900hrs.

03/31/2019 19:02 RTC reports Walk Bridge is now open.

03/31/2019 19:14 RTC reports Walk Bridge is now closed.

03/31/2019 21:13 Status: CLOSE - Bridge Open Incident: CLOSE

2019-0330-B002

Status: CLOSED

| | | | |
|----------------|---------------------|-----------|----------------|
| Incident Type: | BRIDGE INCIDENT LOG | Vessel: | MR. T |
| Bridge: | Walk Bridge | Contact: | (516) 369-0761 |
| Request: | 3/31/2019 8:00:00PM | Notified: | YES |

Date & Time Incident Comments

03/30/2019 16:16 Bridge Operator Watley, Delay Clerk Brook and Mellilo were notified. Mellilo advises he would have to provide update tomorrow to see if conditions will permit for a bridge opening at Walk for 2000hrs.

03/31/2019 20:16 RTC reports Walk Bridge is now open.

03/31/2019 20:35 RTC reports unable to close Walk Bridge. Maintainers are on scene and advise de-rails are not going over. Signal maintainers are investigating the problem and have local control. Train Amtrak 132, 6556, and 6561 are currently being delayed. Refer to Log #2019-0331-0029.

03/31/2019 20:49 Maintainers have resolved the issue and Walk Bridge is now closed.

04/01/2019 00:31 Status: CLOSE - Bridge Open Incident: CLOSE

CHIEF RAIL TRAFFIC CONTROLLER'S LOG

Bridge Open Request

Request Open Dates: 1/1/2019 To: 12/31/2019
2019-0407-B001

Status: CLOSED

Incident Type: BRIDGE INCIDENT LOG Vessel: TEST OPENING-SE/
 Bridge: Walk Bridge Contact: (000) 000-0000
 Request: 4/9/2019 1:00:00AM Notified: YES

Date & Time Incident Comments

04/07/2019 19:53 Test Walk Bridge opening on 4/9 at 0100hrs. Delay Clerk notified.

04/09/2019 01:43 RTC District E reports Walk Bridge is open.

04/09/2019 01:57 Bridge is closed.

04/09/2019 09:06 Status: CLOSE - Bridge Open Incident: CLOSE

2019-0409-B001

Status: CANCELLED

Incident Type: BRIDGE INCIDENT LOG Vessel: BUCHANAN 5
 Bridge: Walk Bridge Contact: (757) 297-1352
 Request: 4/10/2019 2:00:00PM Notified: NO

Date & Time Incident Comments

04/09/2019 14:28 Email sent to bridge group and put in bridge book/DA Bridge Operator Hackett notified.

04/10/2019 12:06 This scheduled opening was re-scheduled by Buchanon 5 for 4/11/19 at 0200 hours and 0330 hours.

04/10/2019 12:07 Status: CLOSE - Bridge Open Incident: CLOSE

2019-0409-B002

Status: CANCELLED

Incident Type: BRIDGE INCIDENT LOG Vessel: BUCHANAN 5
 Bridge: Walk Bridge Contact: (757) 297-1352
 Request: 4/10/2019 3:30:00PM Notified: NO

Date & Time Incident Comments

04/09/2019 14:32 Bridge Group notified, Bridge Inspector-Hackett ntfed.

04/10/2019 12:07 This scheduled opening was re-scheduled by Buchanon 5 for 4/11/19 at 0200 hours and 0330 hours.

04/10/2019 12:08 Status: CLOSE - Bridge Open Incident: CLOSE

2019-0410-B001

Status: CLOSED

Incident Type: BRIDGE INCIDENT LOG Vessel: BUCHANAN 5
 Bridge: Walk Bridge Contact: (757) 297-1352
 Request: 4/11/2019 2:00:00AM Notified: YES

Date & Time Incident Comments

04/10/2019 12:13 Bridge Group, Bridge Operator Elder ntfed

04/11/2019 02:14 Bridge Open. Opening delayed 14 minutes due to late bridge operator. Reference Log # 2019-0411-0013

04/11/2019 02:27 Bridge Closed. No incidents/No Delays.

04/12/2019 03:45 Status: CLOSE - Bridge Open Incident: CLOSE

2019-0410-B003

Status: CLOSED

Incident Type: BRIDGE INCIDENT LOG Vessel: BUCHANAN 5
 Bridge: Walk Bridge Contact: (203) 561-2222
 Request: 4/11/2019 3:30:00AM Notified: YES

CHIEF RAIL TRAFFIC CONTROLLER'S LOG

Bridge Open Request

Request Open Dates: 1/1/2019 To: 12/31/2019

Date & Time Incident Comments

04/10/2019 14:52 Two bridge openings scheduled for 4/11 at 0200hrs. and 0330hrs. at Walk Bridge.

04/11/2019 04:04 Bridge Open.

04/11/2019 04:19 Bridge Closed. Train 1188 delayed 4 minutes due to bridge opening (Chiefs Log 2019-0411-0009).

04/12/2019 03:45 Status: CLOSE - Bridge Open Incident: CLOSE

2019-0416-B001

Status: CLOSED

Incident Type: BRIDGE INCIDENT LOG

Vessel: BUCHANON 5

Bridge: Walk Bridge

Contact: (757) 297-1352

Request: 4/16/2019 9:00:00PM

Notified: NO

Date & Time Incident Comments

 04/16/2019 13:24 Delay Clerk Supervisor - Dellaire
 Delay Clerk - Jessica

04/16/2019 21:05 RTC reports Walk Bridge is open.

04/16/2019 21:20 RTC reports Walk Bridge is now closed.

04/16/2019 21:52 Status: CLOSE - Bridge Open Incident: CLOSE

2019-0416-B002

Status: CLOSED

Incident Type: BRIDGE INCIDENT LOG

Vessel: BUCHANAN 5

Bridge: Walk Bridge

Contact: (757) 297-1352

Request: 4/16/2019 10:30:00PM

Notified: NO

Date & Time Incident Comments

 04/16/2019 13:27 Delay Clerk Supervisor - Dellaire
 Delay Clerk - Jessica

04/17/2019 00:01 As of 2235hrs. on 4/16/2019: Boat has arrived.

04/17/2019 00:02 As of 2245hrs. on 4/17/2019: Walk Bridge is open.

04/17/2019 00:03 As of 2258hrs. on 4/17/2019: Walk Bridge is closed.

04/17/2019 01:09 Status: CLOSE - Bridge Open Incident: CLOSE

2019-0419-B001

Status: CANCELLED

Incident Type: BRIDGE INCIDENT LOG

Vessel: MR. T

Bridge: Walk Bridge

Contact: (757) 297-1352

Request: 4/19/2019 11:00:00PM

Notified: YES

Date & Time Incident Comments

04/19/2019 12:48 Bridge Operator-Elder, Notified Brook Rodriguez and John Melillo okayed the opening.

04/19/2019 13:01 Brook Rodriguez Delay Clerk reports Watley Bridge Operator notified.

04/19/2019 16:55 MR. T Vessel reported it was necessary to cancelled the Bridge opening request.

04/20/2019 06:43 Status: CLOSE - Bridge Open Incident: CLOSE

2019-0419-B002

Status: CANCELLED

Incident Type: BRIDGE INCIDENT LOG

Vessel: MR. T

Bridge: Walk Bridge

Contact: (757) 297-1352

Request: 4/20/2019 12:30:00AM

Notified: YES

CHIEF RAIL TRAFFIC CONTROLLER'S LOG

Bridge Open Request

Request Open Dates: 1/1/2019 To: 12/31/2019

Date & Time Incident Comments

04/19/2019 12:53 Bridge Operator-Elder, Brook Rodriguez ntfed. John Melillo okayed opening.
 04/19/2019 13:02 Brook Rodriguez reports Watley Bridge Operator notified.
 04/19/2019 16:55 MR. T Vessel reports is was necessary to cancelled the Bridge opening request.
 04/20/2019 06:43 Status: CLOSE - Bridge Open Incident: CLOSE

2019-0420-B001

Status: CLOSED

Incident Type: BRIDGE INCIDENT LOG Vessel: MR. T
 Bridge: Walk Bridge Contact: (609) 665-3661
 Request: 4/20/2019 12:00:00PM Notified: YES

Date & Time Incident Comments

04/20/2019 06:36 John Melillo gives permission. Delay Clerk-Field, Bridge Operator-Terrell ntfed. Unable to leave message for Mr. Boddie.
 04/20/2019 12:10 Bridge Operator advises boat has not arrived. After making contact with the vessel, Bridge Operator advises vessel running 25-40 minutes late.
 04/20/2019 12:46 Bridge is open.
 04/20/2019 12:59 Bridge is closed.
 04/20/2019 13:10 Status: CLOSE - Bridge was opened and closed without issue. Vessel arrived 47 minutes late.

2019-0420-B002

Status: CLOSED

Incident Type: BRIDGE INCIDENT LOG Vessel: MR. T
 Bridge: Walk Bridge Contact: (609) 665-3661
 Request: 4/20/2019 1:00:00PM Notified: YES

Date & Time Incident Comments

04/20/2019 06:51 John Melillo gives permission. Delay Clerk-Field, Bridge Operator-Terrell ntfed. Unable to leave message for Mr. Boddie
 04/20/2019 14:25 RTC District F reports Walk Bridge is open.
 04/20/2019 14:43 RTC District F reports Walk Bridge is closed.
 04/20/2019 20:34 Status: CLOSE - Bridge Open Incident: CLOSE

2019-0429-B001

Status: CLOSED

Incident Type: BRIDGE INCIDENT LOG Vessel: BUCHANAN 5
 Bridge: Walk Bridge Contact: (757) 297-1352
 Request: 4/29/2019 8:00:00PM Notified: YES

Date & Time Incident Comments

04/29/2019 12:10 Opening at 2000 Hrs & 2200 Hrs
 04/29/2019 20:14 RTC reports Maintainers have arrived on scene and Walk Bridge is now open.
 04/29/2019 20:32 RTC reports Walk Bridge is now closed.
 04/29/2019 20:37 Status: CLOSE - RTC reports Walk Bridge is now closed.

CHIEF RAIL TRAFFIC CONTROLLER'S LOG

Bridge Open Request

Request Open Dates: 1/1/2019 To: 12/31/2019

2019-0429-B002

Status: CLOSED

Incident Type: BRIDGE INCIDENT LOG Vessel: BUCHANAN 5
 Bridge: Walk Bridge Contact: (757) 297-1352
 Request: 4/29/2019 10:00:00PM Notified: NO

Date & Time Incident Comments

04/29/2019 12:11 Opening at 2000 Hrs & 2200 Hrs
 04/29/2019 22:01 RTC reports Walk Bridge is open.
 04/29/2019 22:13 RTC reports Walk Bridge is now closed.
 04/29/2019 22:25 Status: CLOSE - RTC reports Walk Bridge is now closed

2019-0504-B001

Status: CLOSED

Incident Type: BRIDGE INCIDENT LOG Vessel: HABANERO
 Bridge: Walk Bridge Contact: (917) 689-8333
 Request: 5/4/2019 3:30:00PM Notified: YES

Date & Time Incident Comments

05/04/2019 07:58 Walk Bridge at 1530hrs 5/4/2019
 Melillo gives permission.
 Bridge Operator-Hackett
 Delay Clerk-Jess
 05/04/2019 15:36 RTC District F reports Walk Bridge is open.
 05/04/2019 15:45 RTC District F reports Walk Bridge is closed.
 05/04/2019 21:49 Status: CLOSE - Bridge Open Incident: CLOSE

2019-0505-B001

Status: CLOSED

Incident Type: BRIDGE INCIDENT LOG Vessel: MR. T
 Bridge: Walk Bridge Contact: (609) 665-3661
 Request: 5/5/2019 11:30:00AM Notified: YES

Date & Time Incident Comments

05/05/2019 06:52 Walk Bridge @ 1130hrs today, 5/5/2019 for Mr. T.
 Melillo gives permission.
 Bridge Operator-Eric
 Delay Clerk ntfed.
 05/05/2019 09:34 ****Walk Bridge opening is now scheduled for 1230hrs today, May 5th 2019.***

 Vessel Mr. T contacted the OCC advising they are running behind schedule and it is
 necessary to push back the opening.

 All Parties have been notified/updated.
 05/05/2019 12:33 Walk Bridge is open.
 05/05/2019 12:41 Walk Bridge is closed.
 05/05/2019 13:03 Status: CLOSE - Bridge Open Incident: CLOSE

2019-0505-B002

Status: CLOSED

Incident Type: BRIDGE INCIDENT LOG Vessel: MR. T
 Bridge: Walk Bridge Contact: (609) 665-3661
 Request: 5/5/2019 12:56:00PM Notified: YES

CHIEF RAIL TRAFFIC CONTROLLER'S LOG

Bridge Open Request

Request Open Dates: 1/1/2019 To: 12/31/2019

| <u>Date & Time</u> | <u>Incident Comments</u> |
|------------------------|---|
| 05/05/2019 13:01 | Walk Bridge @ 1400hrs today, 5/5/2019 for Mr. T. Melillo gave permission. Bridge Operator-Eric Delay Clerk ntfed. |
| 05/05/2019 14:16 | Walk Bridge is open. |
| 05/05/2019 14:32 | Walk Bridge is now closed. |
| 05/05/2019 14:41 | Status: CLOSE - Walk Bridge is now closed |

| | | | |
|----------------|---------------------|-----------------------|-----------------|
| | | 2019-0502-B002 | Status: CLOSED |
| Incident Type: | BRIDGE INCIDENT LOG | Vessel: | FRA TESTING PER |
| Bridge: | Walk Bridge | Contact: | (000) 000-0000 |
| Request: | 5/7/2019 10:00:00AM | Notified: | YES |

| <u>Date & Time</u> | <u>Incident Comments</u> |
|------------------------|--|
| 05/02/2019 10:40 | FRA Testing Scheduled for May 7th 1000hrs at Walk Bridge. Permission given by Melillo Delay Clerk-Rodriguez Bridge Operator-Eric |
| 05/07/2019 10:17 | RTC District Q reports Walk Bridge opened. |
| 05/07/2019 10:39 | RTC District Q reports Walk Bridge closed. |
| 05/07/2019 10:48 | RTC District Q reports Walk Bridge opened. |
| 05/07/2019 11:05 | RTC District Q reports Walk Bridge closed. |
| 05/07/2019 11:20 | RTC District Q reports Walk Bridge opened. |
| 05/07/2019 11:34 | RTC District Q reports Walk Bridge closed. |
| 05/07/2019 13:59 | Status: CLOSE - Closed |

| | | | |
|----------------|---------------------|-----------------------|----------------|
| | | 2019-0510-B001 | Status: CLOSED |
| Incident Type: | BRIDGE INCIDENT LOG | Vessel: | HELIUM |
| Bridge: | Walk Bridge | Contact: | (203) 854-6417 |
| Request: | 5/11/2019 9:00:00AM | Notified: | YES |

| <u>Date & Time</u> | <u>Incident Comments</u> |
|------------------------|---|
| 05/10/2019 11:26 | Delay Clerk Brook, Bridge Operator Bill Hacket ntfed. best@mnr.org (BEST, WARREN); dallaire@mnr.org (DALLAIRE, ROBERT); jboddie@mnr.org (BODDIE, JOHN); kmorris@mnr.org (MORRIS, KEVIN); mbunnell@mnr.org (BUNNELL, MICHAEL); miglioizzi@mnr.org (MIGLIOZZI, DONALD); pholmes@mnr.org (HOLMES, PAUL); sbrathwaite1@mnr.org (BRATHWAITE, SHAYNE); sferraro@mnr.org (FERRARO, STEVEN); squinn@mnr.org (QUINN, SEAN) Billy Hackett will be the operator on duty. |
| 05/10/2019 11:34 | John Boddie ntfed. |
| 05/11/2019 09:00 | Walk Bridge opened 0900 hrs and closed 0909 hrs. |
| 05/11/2019 19:15 | Status: CLOSE - Bridge Open Incident: CLOSE |

| | | | |
|----------------|---------------------|-----------------------|----------------|
| | | 2019-0510-B003 | Status: CLOSED |
| Incident Type: | BRIDGE INCIDENT LOG | Vessel: | MEVA |
| Bridge: | Walk Bridge | Contact: | (203) 722-2283 |
| Request: | 5/11/2019 3:00:00PM | Notified: | NO |

| <u>Date & Time</u> | <u>Incident Comments</u> |
|------------------------|--------------------------|
|------------------------|--------------------------|

CHIEF RAIL TRAFFIC CONTROLLER'S LOG

Bridge Open Request

Request Open Dates: 1/1/2019 To: 12/31/2019

05/10/2019 22:20 Caller has requested a 1500hr Walk Bridge Opening on Saturday 5/11/19. Power Director Brown, Trouble Desk Jose, Bridge Mechanic Quinn, Track Mellilo ntfld.

05/11/2019 15:03 The Vessel Meva has arrived on scene at Walk Bridge and is awaiting opening.

05/11/2019 15:12 RTC District F reports Walk Bridge is open.

05/11/2019 15:21 RTC District F reports Walk Bridge is closed.

05/11/2019 19:14 Status: CLOSE - Bridge Open Incident: CLOSE

2019-0514-B003

Status: CLOSED

Incident Type: BRIDGE INCIDENT LOG

Vessel: AEROTHILIA

Bridge: Walk Bridge

Contact: (203) 613-6797

Request: 5/15/2019 10:30:00AM

Notified: YES NTFD BILL HACKETT

Date & Time Incident Comments

05/14/2019 19:00 Delay Clerk-Rodriguez and all names on e-mail list have been contacted. Boddie, John, Best, Warren Holmes, Paul, Migliozi, Donald, Quinn, Sean, Watert, Nicholas, Bunnell, Michael

05/15/2019 10:33 Walk Bridge is open.

05/15/2019 10:45 Walk Bridge is closed.

05/15/2019 11:02 Status: CLOSE - Bridge Open Incident: CLOSE

2019-0517-B002

Status: CLOSED

Incident Type: BRIDGE INCIDENT LOG

Vessel: KNEE DEEP

Bridge: Walk Bridge

Contact: (203) 895-5249

Request: 5/17/2019 1:15:00PM

Notified: HACKETT

Date & Time Incident Comments

05/17/2019 09:54 Delay Clerk Jessica ntfld.

05/17/2019 13:19 Walk Bridge is open.

05/17/2019 13:33 Walk Bridge is closed.

05/17/2019 13:37 Status: CLOSE - Vessel Knee Deep arrived 5 minutes late to opening.

2019-0518-B001

Status: CLOSED

Incident Type: BRIDGE INCIDENT LOG

Vessel: TIPSEA

Bridge: Walk Bridge

Contact: (203) 249-2285

Request: 5/18/2019 11:30:00AM

Notified: HACKETT

Date & Time Incident Comments

05/18/2019 10:38 Walk Bridge opening for the vessel "Tipsea" at 1130hrs today, May 18th 2019.

Melillo gives permission.
Delay Clerk-McLaine ntfld.

05/18/2019 11:49 Walk Bridge is open.

(Vessel arrived on time. Bridge opening was delayed 19 minutes account ET personnel tied up at Cos Cob bridge).

05/18/2019 11:59 Walk Bridge is closed.

05/18/2019 12:01 Status: CLOSE - Vessel arrived on time. Bridge opening was delayed 19 minutes account ET personnel tied up at Cos Cob bridge. (Reference Log# 2019-0518-0016)

CHIEF RAIL TRAFFIC CONTROLLER'S LOG

Bridge Open Request

Request Open Dates: 1/1/2019 To: 12/31/2019

2019-0518-B003

Status: CLOSED

Incident Type: BRIDGE INCIDENT LOG Vessel: BUCHANAN
 Bridge: Walk Bridge Contact: (757) 297-1352
 Request: 5/18/2019 10:00:00PM Notified: TERELL

Date & Time Incident Comments

05/18/2019 18:23 Buchanan is requested a bridge opening at Walk for 2200hrs. Delay Operator, Bridge Operator Terell ,

05/18/2019 22:20 RTC District F reports Walk Bridge is open.

05/19/2019 00:00 5/18/2019// 2239hrs: RTC District F reports Walk Bridge is open.

05/19/2019 09:33 Status: CLOSE - Bridge Open Incident: CLOSE

2019-0518-B004

Status: CANCELLED

Incident Type: BRIDGE INCIDENT LOG Vessel: BUCHANAN
 Bridge: Walk Bridge Contact: (757) 297-1352
 Request: 5/18/2019 11:59:00PM Notified: TERELL

Date & Time Incident Comments

05/18/2019 19:52 Buchanan requested a bridge opening at Walk for 2200hrs. Delay Operator, Bridge Operator Terrell ntfed.

05/19/2019 13:54 Status: CLOSE - Vessel cancelled.

2019-0516-B001

Status: CLOSED

Incident Type: BRIDGE INCIDENT LOG Vessel: CDOT TESTING
 Bridge: Walk Bridge Contact: (000) 000-0000
 Request: 5/19/2019 7:00:00AM Notified: ERIC

Date & Time Incident Comments

05/16/2019 11:00 CDOT Bridge Inspectors will conduct three(3) bridge openings for the Walk Bridge this Sunday, May 19th 2019 between the hours of 0700 and 1600hrs and will coordinate with the OCC.

Melillo gives permission.
 Delay Clerk-Fields
 Dallaire ntfed.

05/19/2019 09:46 Walk Bridge is open.

05/19/2019 10:04 Walk Bridge is closed.

05/19/2019 10:38 Walk Bridge is open.

05/19/2019 10:55 Walk Bridge is closed.

05/19/2019 11:09 Status: CLOSE - RTC District F reports during a scheduled walk bridge opening(CDOT test opening), unable to open the bridge via RTC. Due to same, necessary for Maintainers on scene to take local control to open bridge. Log #2019-0519-0009

2019-0524-B003

Status: CLOSED

Incident Type: BRIDGE INCIDENT LOG Vessel: ISSABELLA
 Bridge: Walk Bridge Contact: (203) 981-5043
 Request: 5/25/2019 11:00:00AM Notified: KEVIN

Date & Time Incident Comments

CHIEF RAIL TRAFFIC CONTROLLER'S LOG

Bridge Open Request

Request Open Dates: 1/1/2019 To: 12/31/2019

05/24/2019 13:48 Walk Bridge tomorrow, 5/25/2019 at 1100hrs for the vessel "Issabella".

All parties ntfed.
 Melillo gives permission.
 Delay Clerk ntfed.

05/25/2019 11:03 Walk Bridge is open.

05/25/2019 11:13 Walk Bridge is closed.

05/25/2019 11:14 Status: CLOSE - Bridge Open Incident: CLOSE

2019-0529-B001

Status: CLOSED

| | | | |
|----------------|----------------------|-----------|------------------|
| Incident Type: | BRIDGE INCIDENT LOG | Vessel: | TEST OPENING-SE/ |
| Bridge: | Walk Bridge | Contact: | (203) 646-7127 |
| Request: | 5/30/2019 12:01:00AM | Notified: | ERIC |

Date & Time Incident Comments

05/29/2019 09:13 Sean Quinn made appointment for opening for testing. Melillo okayed. Delay Clerk-Jessica

05/30/2019 00:57 RTC District F reports Walk Bridge is open.

05/30/2019 01:08 RTC District F reports Walk Bridge is closed.

05/30/2019 04:34 Status: CLOSE - Bridge Open Incident: CLOSE

2019-0531-B003

Status: CLOSED

| | | | |
|----------------|---------------------|-----------|----------------|
| Incident Type: | BRIDGE INCIDENT LOG | Vessel: | HARMS WAY |
| Bridge: | Walk Bridge | Contact: | (203) 273-6307 |
| Request: | 5/31/2019 6:00:00PM | Notified: | KEVIN |

Date & Time Incident Comments

05/31/2019 15:36 Walk Bridge opening scheduled for this evening, May 31 2019 at 1800hrs for the vessel "Harms Way".

Melillo gives permission.
 Delay Clerk ntfed.

05/31/2019 18:00 Bridge Operator advises all personnel and vessel are on scene but Power Department has not arrived. Bridge Operator advises he spoke to electricians who advised they just notified about the bridge opening. OCC contacted the Power Department at 1512hrs.

05/31/2019 18:25 Bridge Operator advises all personnel is on scene.

05/31/2019 18:26 Walk Bridge is open.

05/31/2019 18:47 Walk Bridge is closed.

05/31/2019 21:00 Status: CLOSE - Bridge Open Incident: CLOSE

2019-0602-B001

Status: CLOSED

| | | | |
|----------------|---------------------|-----------|----------------|
| Incident Type: | BRIDGE INCIDENT LOG | Vessel: | MITTEN MAST |
| Bridge: | Walk Bridge | Contact: | (203) 829-1930 |
| Request: | 6/2/2019 11:00:00AM | Notified: | ERIC |

Date & Time Incident Comments

06/02/2019 09:01 Walk Bridge today 06/02/19

06/02/2019 11:00 Walk Bridge is open.

CHIEF RAIL TRAFFIC CONTROLLER'S LOG

Bridge Open Request

Request Open Dates: 1/1/2019 To: 12/31/2019

06/02/2019 11:10 Walk Bridge is closed.

06/02/2019 22:26 Status: CLOSE - Bridge Open Incident: CLOSE

2019-0607-B001

Status: CLOSED

Incident Type: BRIDGE INCIDENT LOG Vessel: BUCHANAN 5
 Bridge: Walk Bridge Contact: (516) 369-1914
 Request: 6/9/2019 2:30:00AM Notified: KEVIN

Date & Time Incident Comments

06/07/2019 15:30 BUCHANAN 5 0230-0330 hrs

06/09/2019 02:26 RTC District F reports the bridge spans are open at Walk Bridge.

06/09/2019 02:44 RTC District F reports the bridge spans are closed at Walk Bridge.

06/09/2019 05:08 Status: CLOSE - .

2019-0608-B004

Status: CLOSED

Incident Type: BRIDGE INCIDENT LOG Vessel: BUCHANAN 5
 Bridge: Walk Bridge Contact: (516) 369-1914
 Request: 6/9/2019 3:30:00AM Notified: KEVIN

Date & Time Incident Comments

06/08/2019 20:31 Delay Clerk - Sean ntfd.

06/09/2019 03:55 RTC District F reports the bridge spans are open at Walk Bridge.

06/09/2019 04:10 RTC District F reports the bridge spans are closed at Walk Bridge. Amtrak 66 was delayed 8 minutes.

06/09/2019 05:12 Status: CLOSE - .

2019-0608-B001

Status: CLOSED

Incident Type: BRIDGE INCIDENT LOG Vessel: PANDA
 Bridge: Walk Bridge Contact: 203-554-7478
 Request: 6/9/2019 11:15:00AM Notified: BILL

Date & Time Incident Comments

06/08/2019 07:26 Bridge Open Request Created

06/09/2019 11:13 Walk Bridge is open.

06/09/2019 11:23 Walk Bridge is closed.

06/09/2019 12:23 Status: CLOSE - Bridge Open Incident: CLOSE

2019-0611-B003

Status: CLOSED

Incident Type: BRIDGE INCIDENT LOG Vessel: SHEAR-WATER
 Bridge: Walk Bridge Contact: (203) 253-7030
 Request: 6/12/2019 2:30:00PM Notified: BILL HACKET

Date & Time Incident Comments

06/11/2019 15:42 Walk Bridge Opening for 6/12 at 1430hrs. Track Supervisor Carroll ntfd.

06/12/2019 14:34 Walk Bridge is open.

06/12/2019 14:43 Walk Bridge is now closed.

06/12/2019 17:37 Status: CLOSE - .

CHIEF RAIL TRAFFIC CONTROLLER'S LOG

Bridge Open Request

Request Open Dates: 1/1/2019 To: 12/31/2019

2019-0613-B001

Status: CLOSED

Incident Type: BRIDGE INCIDENT LOG Vessel: SEAN QUINN TESTI
 Bridge: Walk Bridge Contact: (203) 646-7127
 Request: 6/14/2019 1:00:00AM Notified: ERIC

Date & Time Incident Comments

06/13/2019 11:21 Sean Quinn Scheduled, Delay Clerk-Fields, Melillo okay'd. Christina Bravo reports Bridge Opr. Beerwald covering opening ntfd.
 06/14/2019 00:58 RTC District F reports spans are open at Walk Bridge.
 06/14/2019 01:11 RTC District F reports spans are closed at Walk Bridge
 06/14/2019 01:11 Status: CLOSE - Bridge Open Incident: CLOSE

2019-0614-B001

Status: CLOSED

Incident Type: BRIDGE INCIDENT LOG Vessel: MOBILITY
 Bridge: Walk Bridge Contact: (203) 820-3840
 Request: 6/14/2019 11:00:00AM Notified: TERRELL

Date & Time Incident Comments

06/14/2019 08:31 Delay Clerk: Fields, Melillo ok'd
 06/14/2019 11:15 Walk Bridge Opened.
 06/14/2019 11:25 Walk Bridge Closed.
 06/14/2019 12:11 Status: CLOSE - Bridge Open Incident: CLOSE

2019-0621-B004

Status: CLOSED

Incident Type: BRIDGE INCIDENT LOG Vessel: MR. T
 Bridge: Walk Bridge Contact: (516) 526-1795
 Request: 6/22/2019 2:00:00PM Notified: NO

Date & Time Incident Comments

06/21/2019 23:58 A Walk Bridge opening has been scheduled for Mr. T at 1400hrs. on 6/22/19. Delay Clerk Brook ntfd.
 06/22/2019 14:01 Bridge operator reports trouble with bridge console, electrician is working on same.
 06/22/2019 14:09 Walk Bridge is open
 06/22/2019 14:24 Walk Bridge is closed.
 06/22/2019 15:40 Status: CLOSE - Bridge Open Incident: CLOSE

2019-0622-B001

Status: CLOSED

Incident Type: BRIDGE INCIDENT LOG Vessel: MR. T
 Bridge: Walk Bridge Contact: (516) 526-1795
 Request: 6/22/2019 3:00:00PM Notified: NO

Date & Time Incident Comments

06/22/2019 00:01 A Walk Bridge opening has been scheduled for Mr. T at 1500hrs. on 6/22/19. Delay Clerk Brook ntfd.
 06/22/2019 15:35 Walk Bridge is open.
 06/22/2019 15:49 Walk Bridge is closed.
 06/22/2019 15:51 Status: CLOSE - Bridge Open Incident: CLOSE

CHIEF RAIL TRAFFIC CONTROLLER'S LOG

Bridge Open Request

Request Open Dates: 1/1/2019 To: 12/31/2019

2019-0622-B002

Status: CLOSED

Incident Type: BRIDGE INCIDENT LOG Vessel: MR. T
 Bridge: Walk Bridge Contact: (516) 526-1795
 Request: 6/23/2019 2:00:00AM Notified: BILL

Date & Time Incident Comments

- 06/22/2019 09:15 A Walk Bridge opening has been scheduled for Mr. T at 0200 hrs. on 6/23/19
Delay Clerk Sean notified.
- 06/23/2019 01:58 6/23/19 0158hrs: John Melillo advises crews are on scene but there is no bridge operator is
on site. SEE LOG (2019-0623-0003) for further.
- 06/23/2019 02:41 Walk Bridge is open.
- 06/23/2019 02:58 RTC District F advises Walk bridge is closed.
- 06/23/2019 03:00 Scheduled 0300hrs opening will be delayed account it is the return trip of the delayed 0200hrs
opening. See log item 2019-0623-0003.
- 06/23/2019 22:32 Status: CLOSE - Bridge opening was delayed 41 minutes account late arrival of bridge
operator.

2019-0622-B003

Status: CLOSED

Incident Type: BRIDGE INCIDENT LOG Vessel: MR. T
 Bridge: Walk Bridge Contact: (516) 526-1795
 Request: 6/23/2019 3:00:00AM Notified: BILL

Date & Time Incident Comments

- 06/22/2019 09:21 A Walk Bridge opening has been scheduled for Mr. T at 0300 hrs. on 6/23/19
Delay Clerk Sean notified.
- 06/23/2019 03:00 Bridge opening is delayed account it is the return trip from the delayed 0200hrs opening. See
Log 2019-0623-0003.
- 06/23/2019 03:51 RTC District F advises Walk Bridge is open.
- 06/23/2019 04:05 RTC District F advises Walk Bridge is closed.
- 06/23/2019 22:33 Status: CLOSE - Bridge opening was delayed 51 minutes account late arrival of bridge
operator on previous opening.

2019-0626-B005

Status: CLOSED

Incident Type: BRIDGE INCIDENT LOG Vessel: BELL'AVVENTURA
 Bridge: Walk Bridge Contact: (512) 554-8623
 Request: 6/26/2019 7:45:00PM Notified: WATLEY

Date & Time Incident Comments

- 06/26/2019 16:26 Walk Bridge opening today 6/26 at 1945hrs.
- 06/27/2019 00:01 06-26-19 at 1945hrs. Walk Bridge is open.
- 06/27/2019 00:02 06-26-19 at 1955hrs. Walk Bridge is Closed.
- 06/27/2019 05:12 Status: CLOSE - Bridge Open Incident: CLOSE

2019-0705-B003

Status: CANCELLED

Incident Type: BRIDGE INCIDENT LOG Vessel: BUCHANAN 5
 Bridge: Walk Bridge Contact: (516) 526-1795
 Request: 7/6/2019 12:30:00AM Notified: TERRELL

CHIEF RAIL TRAFFIC CONTROLLER'S LOG

Bridge Open Request

Request Open Dates: 1/1/2019 To: 12/31/2019
Date & Time Incident Comments

07/05/2019 11:36 Delay Clerk - Shawn notified.
 Bravo assigned Bridge Operator: Beerwald
 Melillo left permission

07/05/2019 21:35 BUCHANAN 5 has contacted the OCC and has CANCELLED the 0030hr Walk Bridge opening. All Parties ntfd.

07/05/2019 21:39 Status: CLOSE - Vessel cancelled.

2019-0705-B004

Status: CANCELLED

Incident Type: BRIDGE INCIDENT LOG Vessel: BUCHANAN 5
 Bridge: Walk Bridge Contact: (516) 526-1795
 Request: 7/6/2019 1:30:00AM Notified: TERRELL

Date & Time Incident Comments

07/05/2019 11:39 Delay Clerk - Shawn notified.
 Bravo assigned Bridge Operator: Beerwald
 Melillo left permission

07/05/2019 21:39 BUCHANAN 5 has contacted the OCC and has CANCELLED the 0130hr Walk Bridge opening. All Parties ntfd.

07/05/2019 21:40 Status: CLOSE - Vessel cancelled.

2019-0706-B001

Status: CLOSED

Incident Type: BRIDGE INCIDENT LOG Vessel: BUCHANAN 5
 Bridge: Walk Bridge Contact: (516) 526-1795
 Request: 7/6/2019 1:00:00PM Notified: NO

Date & Time Incident Comments

07/06/2019 01:55 Buchanan 5 has scheduled a Walk Bridge opening for 1300hrs on 7/6/19. Delay Val ntfd.

07/06/2019 13:14 Walk Bridge is open.
 delayed due to vessel late arrival, reference incident log: 2019-0706-0020

07/06/2019 13:27 Walk Bridge is closed.

07/06/2019 15:00 Status: CLOSE - Bridge Operator reports all MNR personnel are on scene awaiting the arrival of the vessel. Reference bridge opening log: 2019-0706-B001

2019-0706-B002

Status: CLOSED

Incident Type: BRIDGE INCIDENT LOG Vessel: BUCHANAN 5
 Bridge: Walk Bridge Contact: (516) 526-1795
 Request: 7/6/2019 2:00:00PM Notified: NO

Date & Time Incident Comments

07/06/2019 01:58 Buchanan 5 has scheduled a Walk Bridge opening for 1400hrs on 7/6/19. Delay Val ntfd.

07/06/2019 14:38 Walk Bridge is open. (reference incident log: 2019-0706-0020)

07/06/2019 14:52 Walk Bridge is now closed.

07/06/2019 15:01 Status: CLOSE - Bridge Operator reports all MNR personnel are on scene awaiting the arrival of the vessel. Reference bridge opening log: 2019-0706-B001

2019-0707-B001

Status: CLOSED

Incident Type: BRIDGE INCIDENT LOG Vessel: HOME LOAN
 Bridge: Walk Bridge Contact: (203) 722-0704
 Request: 7/7/2019 1:30:00PM Notified: ERIC

CHIEF RAIL TRAFFIC CONTROLLER'S LOG

Bridge Open Request

Request Open Dates: 1/1/2019 To: 12/31/2019

Date & Time Incident Comments
 07/07/2019 09:52 Delay Clerk - Jessica notified
 07/07/2019 13:26 Walk Bridge is open.
 07/07/2019 13:34 Walk Bridge is closed.
 07/07/2019 14:40 Status: CLOSE - .

2019-0707-B004

Status: CLOSED

Incident Type: BRIDGE INCIDENT LOG Vessel: LOB-LOLLY
 Bridge: Walk Bridge Contact: (917) 693-9517
 Request: 7/7/2019 4:00:00PM Notified: KEVIN WATLEY

Date & Time Incident Comments
 07/07/2019 14:35 Lob-Lolly vessel has scheduled a Walk Bridge opening at 1600hrs for today 7/7/19.
 07/07/2019 15:51 Walk Bridge is open.
 07/07/2019 16:00 Walk Bridge is closed.
 07/07/2019 16:26 Status: CLOSE - .

2019-0713-B003

Status: CLOSED

Incident Type: BRIDGE INCIDENT LOG Vessel: BUCHANAN 5
 Bridge: Walk Bridge Contact: (516) 369-1914
 Request: 7/13/2019 8:00:00PM Notified: WATLEY

Date & Time Incident Comments
 07/13/2019 13:53 Delay Clerk - Jessica.
 07/13/2019 20:00 Walk Bridge is open.
 07/13/2019 20:15 Walk Bridge is closed.
 07/13/2019 20:23 Status: CLOSE - Bridge Open Incident: CLOSE

2019-0713-B004

Status: CLOSED

Incident Type: BRIDGE INCIDENT LOG Vessel: BUCHANAN 5
 Bridge: Walk Bridge Contact: (516) 369-1914
 Request: 7/13/2019 9:00:00PM Notified: WATLEY

Date & Time Incident Comments
 07/13/2019 13:56 Delay Clerk - Jessica.
 07/13/2019 21:16 Walk Bridge is open. (Delayed opening SEE LOG 2019-0713-0046)
 07/13/2019 21:32 Walk Bridge is closed.
 07/13/2019 21:59 Status: CLOSE - (Delayed opening SEE LOG 2019-0713-0046)

2019-0713-B001

Status: CLOSED

Incident Type: BRIDGE INCIDENT LOG Vessel: BELL'AVVENTURA
 Bridge: Walk Bridge Contact: (512) 554-8623
 Request: 7/14/2019 9:30:00AM Notified: HACKETT

Date & Time Incident Comments
 07/13/2019 11:58 Delay Clerk - Jessica notified.
 07/14/2019 09:32 RTC District F reports all spans are open at Walk Bridge.

CHIEF RAIL TRAFFIC CONTROLLER'S LOG

Bridge Open Request

Request Open Dates: 1/1/2019 To: 12/31/2019

07/14/2019 09:42 RTC District F reports all spans are closed at Walk Bridge.

07/14/2019 09:48 Status: CLOSE - Bridge Open Incident: CLOSE

2019-0713-B002

Status: CLOSED

| | | | |
|----------------|----------------------|-----------|----------------|
| Incident Type: | BRIDGE INCIDENT LOG | Vessel: | BELL'AVVENTURA |
| Bridge: | Walk Bridge | Contact: | (512) 554-8623 |
| Request: | 7/14/2019 12:30:00PM | Notified: | HACKETT |

Date & Time Incident Comments

07/13/2019 11:59 Delay Clerk - Jessica notified.

07/14/2019 12:33 Walk Bridge is open.

07/14/2019 12:45 Walk Bridge is closed.

07/14/2019 13:03 Status: CLOSE - .

2019-0710-B001

Status: CLOSED

| | | | |
|----------------|----------------------|-----------|-----------------|
| Incident Type: | BRIDGE INCIDENT LOG | Vessel: | SEAN QUINN-CDOT |
| Bridge: | Walk Bridge | Contact: | (203) 646-7127 |
| Request: | 7/17/2019 11:00:00AM | Notified: | WATLEY |

Date & Time Incident Comments

07/10/2019 15:56 Sean Quinn has requested a Walk Bridge Opening for Wednesday 7/17 at 1100hrs.

07/17/2019 11:49 Status: REOPEN - Per Sean Quinn opening has been cancelled.

07/17/2019 11:49 Status: RECLOSE - Bridge Open Incident: CLOSE

2019-0726-B001

Status: CLOSED

| | | | |
|----------------|---------------------|-----------|----------------|
| Incident Type: | BRIDGE INCIDENT LOG | Vessel: | MORGENFRAU |
| Bridge: | Walk Bridge | Contact: | (203) 219-3573 |
| Request: | 7/26/2019 1:15:00PM | Notified: | YES |

Date & Time Incident Comments

07/26/2019 10:51 Sean-Delay ntfed.

07/26/2019 13:22 Walk Bridge was opened

07/26/2019 13:32 Walk Bridge closed.

07/26/2019 14:31 Status: CLOSE - Bridge Open Incident: CLOSE

2019-0728-B001

Status: CLOSED

| | | | |
|----------------|---------------------|-----------|----------------|
| Incident Type: | BRIDGE INCIDENT LOG | Vessel: | BELL'AVVENTURA |
| Bridge: | Walk Bridge | Contact: | (512) 554-8623 |
| Request: | 7/29/2019 8:45:00AM | Notified: | KEVIN WATLEY |

Date & Time Incident Comments

07/28/2019 20:32 Walk Bridge Opening scheduled on 7/29 at 0845hrs and 1145hrs. Delay Clerk notified.

07/29/2019 08:47 Walk Bridge open at this time.

07/29/2019 08:54 Walk Bridge is closed.

07/29/2019 23:34 Status: CLOSE - Bridge Open Incident: CLOSE

CHIEF RAIL TRAFFIC CONTROLLER'S LOG

Bridge Open Request

Request Open Dates: 1/1/2019 To: 12/31/2019

2019-0728-B002

Status: CLOSED

Incident Type: BRIDGE INCIDENT LOG Vessel: BELL'AVVENTURA
 Bridge: Walk Bridge Contact: (512) 554-8623
 Request: 7/29/2019 11:45:00AM Notified: KEVIN WATLEY

Date & Time Incident Comments

07/28/2019 20:34 Walk Bridge Opening scheduled on 7/29 at 0845hrs and 1145hrs. Delay Clerk notified.
 07/29/2019 11:45 Walk Bridge open.
 07/29/2019 11:54 Walk Bridge closed.
 07/29/2019 23:34 Status: CLOSE - Bridge Open Incident: CLOSE

2019-0731-B002

Status: CLOSED

Incident Type: BRIDGE INCIDENT LOG Vessel: BELL'AVVENTURA
 Bridge: Walk Bridge Contact: (512) 554-8623
 Request: 8/2/2019 11:00:00AM Notified: KEVIN WATLEY

Date & Time Incident Comments

07/31/2019 16:10 Bell'Avventura scheduled a Walk Bridge opening for August 2nd at 1100hrs and 1500hrs.
 08/02/2019 11:01 Walk Bridge requested open.
 08/02/2019 11:06 Walk Bridge open.
 08/02/2019 11:12 Walk Bridge closed.
 08/02/2019 11:25 Status: CLOSE - Bridge Open Incident: CLOSE

2019-0731-B003

Status: CLOSED

Incident Type: BRIDGE INCIDENT LOG Vessel: BELL'AVVENTURA
 Bridge: Walk Bridge Contact: (512) 554-8623
 Request: 8/2/2019 3:00:00PM Notified: KEVIN WATLEY

Date & Time Incident Comments

07/31/2019 16:13 Bell'Avventura scheduled a bridge opening for 8/2 at 1100hrs and 1500hrs.
 08/02/2019 11:07 Walk Bridge is open.
 08/02/2019 11:17 Walk Bridge closed.
 08/02/2019 15:05 Walk Bridge is open.
 08/02/2019 15:16 Walk Bridge closed.
 08/02/2019 15:21 Status: CLOSE - Bridge Open Incident: CLOSE

2019-0809-B002

Status: CLOSED

Incident Type: BRIDGE INCIDENT LOG Vessel: BUCHANAN 5
 Bridge: Walk Bridge Contact: (516) 369-1914
 Request: 8/9/2019 6:30:00PM Notified: HACKETT

Date & Time Incident Comments

08/09/2019 09:26 1830HRS and 1930HRS..Sean/delay ntfed.
 08/09/2019 18:39 Walk Bridge is open.
 08/09/2019 18:48 Walk Bridge is closed.
 08/09/2019 19:43 Walk Bridge is open.

CHIEF RAIL TRAFFIC CONTROLLER'S LOG

Bridge Open Request

Request Open Dates: 1/1/2019 To: 12/31/2019

08/09/2019 19:58 Walk Bridge is closed.

08/10/2019 06:27 Status: CLOSE - Bridge Open Incident: CLOSE

2019-0810-B002

Status: CLOSED

Incident Type: BRIDGE INCIDENT LOG Vessel: BUCHANAN 5
 Bridge: Walk Bridge Contact: (516) 369-1914
 Request: 8/11/2019 7:00:00AM Notified: ERIC

Date & Time Incident Comments

08/10/2019 19:39 Openings at 0700 and 0800hrs. Delay Operator - Sean ntf. 1939hrs.

08/11/2019 07:11 Walk Bridge is open.

08/11/2019 07:25 Walk Bridge is closed

08/11/2019 08:22 Walk Bridge is open

08/11/2019 08:34 Walk Bridge is closed

08/11/2019 22:29 Status: CLOSE - Bridge Open Incident: CLOSE

2019-0816-B002

Status: CLOSED

Incident Type: BRIDGE INCIDENT LOG Vessel: BUCHANAN 5
 Bridge: Walk Bridge Contact: (516) 369-1914
 Request: 8/17/2019 11:30:00AM Notified: HACKETT

Date & Time Incident Comments

08/16/2019 10:39 Delay Clerk - Shawn notified

08/17/2019 11:27 Walk Bridge is open.

08/17/2019 11:38 Walk Bridge is closed.

08/17/2019 15:23 Status: CLOSE - Bridge Open Incident: CLOSE

2019-0816-B003

Status: CLOSED

Incident Type: BRIDGE INCIDENT LOG Vessel: BUCHANAN 5
 Bridge: Walk Bridge Contact: (516) 369-1914
 Request: 8/17/2019 1:00:00PM Notified: HACKETT

Date & Time Incident Comments

08/16/2019 10:40 Delay Clerk - Shawn notified

08/17/2019 13:05 Walk Bridge is open.

08/17/2019 13:19 Walk Bridge is closed.

08/17/2019 15:23 Status: CLOSE - Bridge Open Incident: CLOSE

2019-0824-B001

Status: CLOSED

Incident Type: BRIDGE INCIDENT LOG Vessel: BUCHANAN 5
 Bridge: Walk Bridge Contact: (516) 369-1914
 Request: 8/25/2019 5:00:00AM Notified: KEVIN WATLEY

Date & Time Incident Comments

08/24/2019 18:11 There is Walk Bridge Opening scheduled for 0500hrs tomorrow, August 25th* 2019 for the vessel "Buchanan 5". (Melillo granted permission)

08/25/2019 05:32 Called vessel contact at 0532HRS, message left

08/25/2019 06:05 Walk Bridge Operator reports Buchanan 5 vessel that was scheduled for 0500 hrs has arrived.

CHIEF RAIL TRAFFIC CONTROLLER'S LOG

Bridge Open Request

Request Open Dates: 1/1/2019 To: 12/31/2019

08/25/2019 06:18 Walk Bridge is open at this time.

08/25/2019 06:34 Walk Bridge is closed.

08/25/2019 19:16 Status: CLOSE - .

2019-0824-B002

Status: CLOSED

Incident Type: BRIDGE INCIDENT LOG Vessel: BUCHANAN 5
 Bridge: Walk Bridge Contact: (516) 369-1914
 Request: 8/25/2019 6:30:00AM Notified: KEVIN WATLEY

Date & Time Incident Comments

08/24/2019 18:14 There is a Walk Bridge Opening scheduled for 0630hrs tomorrow, August 25th 2019 for the vessel "Buchanan 5". (Melillo granted permission)

08/25/2019 07:56 The vessel scheduled for 0630 opening has arrived.

08/25/2019 07:59 Walk Bridge is open.

08/25/2019 08:12 Walk Bridge is closed.

08/25/2019 19:16 Status: CLOSE - .

2019-0908-B001

Status: CLOSED

Incident Type: BRIDGE INCIDENT LOG Vessel: BELL'AVVENTURA
 Bridge: Walk Bridge Contact: (512) 554-8623
 Request: 9/9/2019 10:00:00AM Notified: ERIC

Date & Time Incident Comments

09/08/2019 08:38 Delay Clerk - Jessica

09/09/2019 10:00 Walk Bridge Open

09/09/2019 10:10 Walk Bridge Closed

09/09/2019 15:19 Status: CLOSE - .

2019-0911-B001

Status: CANCELLED

Incident Type: BRIDGE INCIDENT LOG Vessel: BUCHANAN 5
 Bridge: Walk Bridge Contact: (757) 297-1352
 Request: 9/11/2019 8:45:00PM Notified: WATLEY

Date & Time Incident Comments

09/11/2019 09:47 Bridge Open Request Created

09/11/2019 20:30 Buchanan 5 has cancelled opening.

09/11/2019 22:00 Status: CLOSE - Bridge Open Incident: CLOSE

2019-0911-B002

Status: CANCELLED

Incident Type: BRIDGE INCIDENT LOG Vessel: BUCHANAN 5
 Bridge: Walk Bridge Contact: (757) 297-1352
 Request: 9/11/2019 10:15:00PM Notified: WATLEY

Date & Time Incident Comments

09/11/2019 09:54 Bridge Open Request Created

09/11/2019 21:57 Buchanan5 called and cancelled the opening at 2215hrs.

09/11/2019 22:00 Status: CLOSE - Buchanan 5 has cancelled opening.

CHIEF RAIL TRAFFIC CONTROLLER'S LOG

Bridge Open Request

Request Open Dates: 1/1/2019 To: 12/31/2019

2019-0913-B001

Status: CLOSED

Incident Type: BRIDGE INCIDENT LOG Vessel: HABANERO
 Bridge: Walk Bridge Contact: (917) 689-8333
 Request: 9/13/2019 2:30:00PM Notified: HACKETT

Date & Time Incident Comments

09/13/2019 07:04 Delay Clerk - Sean
 09/13/2019 14:44 Walk Bridge is open.
 09/13/2019 14:53 Walk Bridge is closed.
 09/13/2019 14:54 Status: CLOSE - Bridge Open Incident: CLOSE

2019-0913-B002

Status: CLOSED

Incident Type: BRIDGE INCIDENT LOG Vessel: BUCHANAN 5
 Bridge: Walk Bridge Contact: (757) 297-1352
 Request: 9/13/2019 10:00:00PM Notified: SCOTT

Date & Time Incident Comments

09/13/2019 15:33 There is a Walk Bridge opening scheduled for this evening, September 13th 2019 at 2200hrs for the vessel "Buchanan 5".
 09/13/2019 22:02 Walk Bridge is open.
 09/13/2019 22:13 Walk Bridge is closed.
 09/13/2019 22:15 Status: CLOSE - Bridge Open Incident: CLOSE

2019-0913-B003

Status: CLOSED

Incident Type: BRIDGE INCIDENT LOG Vessel: BUCHANAN 5
 Bridge: Walk Bridge Contact: (757) 297-1352
 Request: 9/13/2019 11:15:00PM Notified: SCOTT

Date & Time Incident Comments

09/13/2019 15:36 There is a Walk Bridge opening scheduled for this evening, September 13th 2019 at 2315 for the vessel "Buchanan 5".
 09/14/2019 00:44 9/13/19 at 2332hrs. RTC District F reports Vessel arrived on scene 15 minutes late and advises all spans are open at Walk Bridge.
 09/14/2019 00:46 9/13/19 at 2346hrs. RTC District F reports all spans are closed at Walk Bridge
 09/14/2019 00:47 Status: CLOSE - Bridge Open Incident: CLOSE

2019-0920-B002

Status: CLOSED

Incident Type: BRIDGE INCIDENT LOG Vessel: MITTEN MAST
 Bridge: Walk Bridge Contact: (203) 829-1930
 Request: 9/21/2019 10:00:00AM Notified: KEVIN W

Date & Time Incident Comments

09/20/2019 20:35 There is a Walk Bridge opening scheduled for tomorrow, September 21st 2019 at 1000hrs for the vessel "Mitten Mast".

 Melillo gives permission.
 09/21/2019 09:59 RTC reports Walk Bridge is open.
 09/21/2019 10:08 RTC reports Walk Bridge is closed.

CHIEF RAIL TRAFFIC CONTROLLER'S LOG

Bridge Open Request

Request Open Dates: 1/1/2019 To: 12/31/2019

09/21/2019 10:36 Status: CLOSE - .

2019-0921-B002

Status: CLOSED

| | | | |
|----------------|---------------------|-----------|----------------|
| Incident Type: | BRIDGE INCIDENT LOG | Vessel: | JAMES WILLIAM |
| Bridge: | Walk Bridge | Contact: | (757) 621-5309 |
| Request: | 9/22/2019 5:00:00AM | Notified: | KEVIN W |

Date & Time Incident Comments

09/21/2019 18:31 There is a Walk Bridge opening scheduled for tomorrow, September 21 2019 at 0500hrs for the vessel "James William".

Melillo gives permission.

09/22/2019 05:05 RTC District F reports the bridge span is open at Walk Bridge.

09/22/2019 05:21 RTC District F reports the bridge span is closed at Walk Bridge.

09/22/2019 06:35 Status: CLOSE - Bridge Open Incident: CLOSE

2019-0921-B003

Status: CLOSED

| | | | |
|----------------|---------------------|-----------|----------------|
| Incident Type: | BRIDGE INCIDENT LOG | Vessel: | JAMES WILLIAM |
| Bridge: | Walk Bridge | Contact: | (757) 621-5309 |
| Request: | 9/22/2019 6:00:00AM | Notified: | KEVIN W |

Date & Time Incident Comments

09/21/2019 18:33 There is a Walk Bridge opening scheduled for tomorrow, September 21 2019 at 0600hrs for the vessel "James William".

Melillo gives permission.

09/22/2019 06:29 Walk Bridge is open at a later time account late vessel arrival.

09/22/2019 06:49 Ref. Chiefs Log # 0922-0006. Walk Bridge is closed.

09/22/2019 17:10 Status: CLOSE - .

09/23/2019 02:13 Status: REOPEN - Bridge Open Incident: OPEN

09/23/2019 02:17 Status: RECLOSE - Bridge Open Incident: CLOSE

2019-0927-B003

Status: CLOSED

| | | | |
|----------------|---------------------|-----------|----------------|
| Incident Type: | BRIDGE INCIDENT LOG | Vessel: | BUCHANAN 5 |
| Bridge: | Walk Bridge | Contact: | (516) 369-1914 |
| Request: | 9/27/2019 9:00:00PM | Notified: | KEVIN |

Date & Time Incident Comments

09/27/2019 14:10 Buchanan 5 scheduled bridge opening for tonight 9/27 at 2100hrs and 2200hrs. Delay Clerk ntf.

09/27/2019 20:58 Walk Bridge is open.

09/27/2019 21:13 Walk Bridge is closed.

09/27/2019 21:14 Status: CLOSE - Bridge Open Incident: CLOSE

2019-0927-B004

Status: CLOSED

| | | | |
|----------------|----------------------|-----------|----------------|
| Incident Type: | BRIDGE INCIDENT LOG | Vessel: | BUCHANAN 5 |
| Bridge: | Walk Bridge | Contact: | (516) 369-1914 |
| Request: | 9/27/2019 10:00:00PM | Notified: | KEVIN |

CHIEF RAIL TRAFFIC CONTROLLER'S LOG

Bridge Open Request

Request Open Dates: 1/1/2019 To: 12/31/2019
Date & Time Incident Comments

09/27/2019 14:13 Buchanan 5 scheduled bridge openings for tonight 9/27 at 2100hrs and 2200hrs. Delay Clerk ntf.

09/27/2019 22:19 Walk Bridge is open.

09/28/2019 00:00 Walk Bridge is closed at 2232hrs. on 9/27/19

09/28/2019 03:53 Status: CLOSE - Bridge Open Incident: CLOSE

2019-1004-B003

Status: CLOSED

| | | | |
|----------------|----------------------|-----------|----------------|
| Incident Type: | BRIDGE INCIDENT LOG | Vessel: | SHEAR-WATER |
| Bridge: | Walk Bridge | Contact: | (203) 253-7030 |
| Request: | 10/5/2019 11:00:00AM | Notified: | BILL |

Date & Time Incident Comments

10/04/2019 10:59 Shear-Water scheduled a Walk Bridge opening for 10/5 at 1100hrs.

10/05/2019 11:14 Walk Bridge was opened at 11:00hrs and closed at 11:08 hrs.

10/05/2019 11:17 Status: CLOSE - Bridge Open Incident: CLOSE

2019-1005-B001

Status: CLOSED

| | | | |
|----------------|---------------------|-----------|----------------|
| Incident Type: | BRIDGE INCIDENT LOG | Vessel: | BELL'AVVENTURA |
| Bridge: | Walk Bridge | Contact: | (512) 554-8623 |
| Request: | 10/5/2019 3:30:00PM | Notified: | BILL |

Date & Time Incident Comments

10/05/2019 10:50 Bell'avventura scheduled a WALK bridge opening for 10/05 at 1530hrs.

10/05/2019 10:51 Bill Hackett- bridge operator notified at 10:40 hrs. Left voicemail with Lugo waiting on return call.

10/05/2019 11:07 Customer Service Manager- Mike ntf. Account unable to reach Lugo.

10/05/2019 15:46 Walk Bridge is open.

10/05/2019 15:55 Walk Bridge is closed.

10/06/2019 06:04 Status: CLOSE - Bridge Open Incident: CLOSE

2019-1013-B002

Status: CLOSED

| | | | |
|----------------|-----------------------|-----------|----------------|
| Incident Type: | BRIDGE INCIDENT LOG | Vessel: | ISABELLA |
| Bridge: | Walk Bridge | Contact: | (203) 981-5045 |
| Request: | 10/14/2019 11:00:00AM | Notified: | DERRELL |

Date & Time Incident Comments

10/13/2019 10:14 Isabella Vessel scheduled Walk Bridge Opening on 10/14/2019 at 1100Hrs. All parties ntf.

10/14/2019 11:18 Walk Bridge is open late account another scheduled bridge open at 1115 hours and both vessels agreed to have the opening at that time.

10/14/2019 11:30 Walk Bridge is closed.

10/14/2019 14:32 Status: CLOSE - Bridge Open Incident: CLOSE

2019-1012-B002

Status: CLOSED

| | | | |
|----------------|-----------------------|-----------|----------------|
| Incident Type: | BRIDGE INCIDENT LOG | Vessel: | AEROPHILIA |
| Bridge: | Walk Bridge | Contact: | (203) 613-6797 |
| Request: | 10/14/2019 11:15:00AM | Notified: | ERIC |

CHIEF RAIL TRAFFIC CONTROLLER'S LOG

Bridge Open Request

Request Open Dates: 1/1/2019 To: 12/31/2019

Date & Time Incident Comments

10/12/2019 15:08 Aerophilia Scheduled a Walk Bridge opening for Monday 10/14 at 1115 Hours.
 10/14/2019 11:18 Walk Bridge is open.
 10/14/2019 11:30 Walk Bridge is closed.
 10/14/2019 14:32 Status: CLOSE - Bridge Open Incident: CLOSE

2019-1014-B001

Status: CLOSED

Incident Type: BRIDGE INCIDENT LOG Vessel: KEENEY
 Bridge: Walk Bridge Contact: (203) 883-2744
 Request: 10/14/2019 3:30:00PM Notified: TERREL

Date & Time Incident Comments

10/14/2019 08:54 Scheduled bridge opening at Walk for today 10/14 at 1530 Hours. Delay clerk ntfed.
 10/14/2019 15:32 Walk Bridge is open.
 10/14/2019 15:43 Walk Bridge is closed.
 10/14/2019 18:13 Status: CLOSE - Bridge Open Incident: CLOSE

2019-1015-B004

Status: CLOSED

Incident Type: BRIDGE INCIDENT LOG Vessel: BUCHANAN 5
 Bridge: Walk Bridge Contact: (516) 369-1914
 Request: 10/16/2019 11:30:00AM Notified: BILL HACKETT

Date & Time Incident Comments

10/15/2019 19:23 There is a Walk Bridge opening for tomorrow, October 16, 2019 at 1130hrs for the vessel "Buchanan 5".
 10/16/2019 11:34 Walk Bridge is open.
 10/16/2019 11:38 Reports unable to open Walk Bridge for the scheduled 1130 Hours opening. The following trains are being delayed: 1555, A171, A2159, 1520. (Chiefs Log # 2019-1016-0017).
 10/16/2019 11:50 Maintainers advise have local control and were able to close Walk Bridge. All trains are on the move. Maintainers are working on same and scheduled bridge opening is being delayed until maintainers can correct the problem.
 10/16/2019 12:21 Walk Bridge is open.
 10/16/2019 12:30 Walk Bridge is now closed.
 10/16/2019 14:26 Status: CLOSE - Bridge Open Incident: CLOSE

2019-1015-B005

Status: CLOSED

Incident Type: BRIDGE INCIDENT LOG Vessel: BUCHANAN 5
 Bridge: Walk Bridge Contact: (516) 369-1914
 Request: 10/16/2019 1:00:00PM Notified: BILL HACKETT

Date & Time Incident Comments

10/15/2019 19:25 There is a Walk Bridge opening for tomorrow, October 16, 2019 at 1300hrs for the vessel "Buchanan 5".
 10/16/2019 13:43 Walk Bridge is open. Delay occurred account boat arrived late.
 10/16/2019 13:53 Walk Bridge is closed.
 10/16/2019 14:26 Status: CLOSE - Bridge Open Incident: CLOSE

CHIEF RAIL TRAFFIC CONTROLLER'S LOG

Bridge Open Request

Request Open Dates: 1/1/2019 To: 12/31/2019

2019-1021-B002

Status: CLOSED

| | | | |
|----------------|-----------------------|-----------|----------------|
| Incident Type: | BRIDGE INCIDENT LOG | Vessel: | MOBILITY |
| Bridge: | Walk Bridge | Contact: | (203) 820-3840 |
| Request: | 10/21/2019 11:00:00AM | Notified: | JIM |

Date & Time Incident Comments

10/21/2019 08:30 Bridge Operator Tom ntf.

10/21/2019 11:11 Walk Bridge open.

10/21/2019 11:18 Walk Bridge is closed.

10/21/2019 11:26 After a scheduled Walk Bridge opening, the 20 D-Rail is unable to normal. Train 1518 is being delayed.(Log #2019-1021-0016)

10/21/2019 11:28 Maintainers on scene were able to normal the 20 D-Rail and Train 1518 is on the move, operating 11 minutes late. 2019-1021-0016

10/21/2019 11:42 Status: CLOSE - Bridge Open Incident: CLOSE

2019-1023-B001

Status: CLOSED

| | | | |
|----------------|-----------------------|-----------|----------------|
| Incident Type: | BRIDGE INCIDENT LOG | Vessel: | MORGENFRAU |
| Bridge: | Walk Bridge | Contact: | (203) 219-3573 |
| Request: | 10/23/2019 11:15:00AM | Notified: | TERRELL |

Date & Time Incident Comments

10/23/2019 07:49 Delay Clerk Jessica ntf.

10/23/2019 11:24 Walk Bridge Opened.

10/23/2019 11:33 Walk Bridge Closed.

10/23/2019 11:57 Status: CLOSE - Bridge Open Incident: CLOSE

2019-1023-B004

Status: CLOSED

| | | | |
|----------------|----------------------|-----------|----------------|
| Incident Type: | BRIDGE INCIDENT LOG | Vessel: | KLOE |
| Bridge: | Walk Bridge | Contact: | (203) 984-1571 |
| Request: | 10/24/2019 1:30:00PM | Notified: | KEVIN W. |

Date & Time Incident Comments

10/23/2019 15:27 Walk Bridge opening on 10/24 at 1330 Hours.

10/24/2019 13:15 Vessel advises operating 20 minutes late.

10/25/2019 00:01 As of 10/24/2019, 1441Hrs. the vessel has arrived and Walk Bridge is open.

10/25/2019 00:02 As of 10/24/2019, 1450Hrs. Walk Bridge is closed.

10/25/2019 05:25 Status: CLOSE - Bridge Open Incident: CLOSE

2019-1026-B001

Status: CLOSED

| | | | |
|----------------|----------------------|-----------|----------------|
| Incident Type: | BRIDGE INCIDENT LOG | Vessel: | BUCHANAN 5 |
| Bridge: | Walk Bridge | Contact: | (516) 369-1914 |
| Request: | 10/26/2019 8:30:00PM | Notified: | BILL |

Date & Time Incident Comments

10/26/2019 11:01 Jessica Delay ntf.

10/26/2019 20:24 Bridge open.

10/26/2019 20:38 Bridge closed.

CHIEF RAIL TRAFFIC CONTROLLER'S LOG

Bridge Open Request

Request Open Dates: 1/1/2019 To: 12/31/2019

10/26/2019 20:49 Status: CLOSE - Bridge Open Incident: CLOSE

2019-1026-B002

Status: CLOSED

Incident Type: BRIDGE INCIDENT LOG Vessel: BUCHANAN 5
 Bridge: Walk Bridge Contact: (516) 369-1914
 Request: 10/26/2019 9:30:00PM Notified: BILL

Date & Time Incident Comments

10/26/2019 11:03 Jessica Delay ntfed.
 10/26/2019 21:47 Bridge is open.
 10/26/2019 22:01 Bridge is closed.
 10/26/2019 22:03 Status: CLOSE - vessel arrived 13 minutes late.

2019-1028-B002

Status: CLOSED

Incident Type: BRIDGE INCIDENT LOG Vessel: HOME ALONE
 Bridge: Walk Bridge Contact: (203) 722-0704
 Request: 10/28/2019 3:00:00PM Notified: TERRELL

Date & Time Incident Comments

10/28/2019 09:18 Bridge Open Request Created
 10/28/2019 15:12 Walk Bridge is open.
 10/28/2019 15:24 Walk Bridge is closed.
 10/28/2019 15:30 Status: CLOSE - .

2019-1031-B002

Status: CLOSED

Incident Type: BRIDGE INCIDENT LOG Vessel: BELL'AVVENTURA
 Bridge: Walk Bridge Contact: (512) 554-8623
 Request: 11/2/2019 7:00:00AM Notified: TERRELL

Date & Time Incident Comments

10/31/2019 12:24 Bridge Open Request Created
 11/02/2019 07:00 Bridge Operator reports all MNR personnel are in place awaiting the arrival of the vessel.
 Reference Chief Log 2019-1102-0012.
 11/02/2019 07:50 Walk Bridge is open.
 11/02/2019 08:01 Walk Bridge is closed.
 11/02/2019 14:55 Status: CLOSE - Bridge Open Incident: CLOSE

2019-1103-B001

Status: CLOSED

Incident Type: BRIDGE INCIDENT LOG Vessel: BARGE
 Bridge: Walk Bridge Contact: (516) 369-1914
 Request: 11/3/2019 2:00:00PM Notified: ERIC

Date & Time Incident Comments

11/03/2019 08:34 Vessel Barge requested Walk Bridge Opening on 11/03/2019 at 1400Hrs.
 11/03/2019 14:08 Walk Bridge is open.
 11/03/2019 14:24 Walk Bridge is closed.
 11/03/2019 14:55 Status: CLOSE - .

CHIEF RAIL TRAFFIC CONTROLLER'S LOG

Bridge Open Request

Request Open Dates: 1/1/2019 To: 12/31/2019

2019-1103-B002

Status: CLOSED

Incident Type: BRIDGE INCIDENT LOG Vessel: BARGE
 Bridge: Walk Bridge Contact: (516) 369-1914
 Request: 11/3/2019 4:00:00PM Notified: ERIC

Date & Time Incident Comments

11/03/2019 08:37 Vessel Barge requested Walk Bridge Opening on 11/03/2019 at 1600Hrs.
 11/03/2019 15:50 Walk Bridge is open.
 11/03/2019 16:07 Walk Bridge is closed.
 11/03/2019 18:06 Status: CLOSE - .

2019-1101-B003

Status: CLOSED

Incident Type: BRIDGE INCIDENT LOG Vessel: TORCH
 Bridge: Walk Bridge Contact: (203) 216-8681
 Request: 11/4/2019 3:00:00PM Notified: TOM

Date & Time Incident Comments

11/01/2019 15:33 There is a Walk Bridge opening Monday, November 4 2019 at 1500hrs.
 11/04/2019 15:11 Walk Bridge is open and was delayed due to Maintainers changing shifts. Chiefs Log # 2019-1104-0049.
 11/04/2019 15:22 Walk Bridge is closed.
 11/04/2019 22:49 Status: CLOSE - Bridge Open Incident: CLOSE

2019-1108-B002

Status: CLOSED

Incident Type: BRIDGE INCIDENT LOG Vessel: BUCHANAN 5
 Bridge: Walk Bridge Contact: (516) 369-1914
 Request: 11/9/2019 7:30:00AM Notified: KEVIN WATLEY

Date & Time Incident Comments

11/08/2019 17:52 There is a Walk Bridge opening tomorrow, November 9th 2019 at 0730hrs for Buchanan 5.
 11/09/2019 07:40 Reports the 10 derrails is out of correspondence at Walk Bridge for scheduled opening at 0730hrs. The vessel has arrived on time. Maintainers are working on same. Amtrak Train 150 is being delayed at CP 229. (Chief Log # 2019-1109-0012). D/S Pomes, Trouble Desk-Donnell, Amtrak 40 Office ntfed.
 11/09/2019 07:55 RTC reports the 10 derrails are back in correspondence at Walk Bridge, vessel is clear of the bridge and Walk Bridge is closed.
 11/09/2019 14:35 Status: CLOSE - Bridge Open Incident: CLOSE

2019-1108-B003

Status: CLOSED

Incident Type: BRIDGE INCIDENT LOG Vessel: BUCHANAN 5
 Bridge: Walk Bridge Contact: (516) 369-1914
 Request: 11/9/2019 8:30:00AM Notified: KEVIN WATLEY

Date & Time Incident Comments

11/08/2019 17:54 There is a Walk Bridge opening tomorrow, November 9th 2019 at 0830hrs for Buchanan 5.
 11/09/2019 08:28 Vessel has arrived on time at Walk Bridge.
 11/09/2019 08:29 Walk Bridge is open.
 11/09/2019 08:42 Walk Bridge is closed.

CHIEF RAIL TRAFFIC CONTROLLER'S LOG

Bridge Open Request

Request Open Dates: 1/1/2019 To: 12/31/2019

11/09/2019 14:35 Status: CLOSE - Bridge Open Incident: CLOSE

2019-1109-B001

Status: CLOSED

Incident Type: BRIDGE INCIDENT LOG Vessel: BUCHANAN 5
 Bridge: Walk Bridge Contact: (516) 369-1914
 Request: 11/10/2019 8:00:00AM Notified: KEVIN

Date & Time Incident Comments

11/09/2019 17:40 There is a Walk Bridge opening tomorrow, November 10th 2019 at 0800hrs for the Buchanan 5.

11/10/2019 08:16 RTC reports unable to remove switch blocks from the 35 switch, account same maintainers took local control and were able to open the bridge. Walk bridge is now open.

11/10/2019 08:32 Walk bridge is now closed.

11/10/2019 11:06 Status: CLOSE - Bridge Open Incident: CLOSE

2019-1109-B002

Status: CLOSED

Incident Type: BRIDGE INCIDENT LOG Vessel: BUCHANAN 5
 Bridge: Walk Bridge Contact: (516) 369-1914
 Request: 11/10/2019 9:15:00AM Notified: KEVIN

Date & Time Incident Comments

11/09/2019 18:08 There is a Walk Bridge opening tomorrow, November 10th 2019 at 0915hrs for the Buchanan 5.

11/10/2019 09:29 Walk bridge is now open. Vessel was 10 minutes late.

11/10/2019 09:44 Walk bridge is now closed.

11/10/2019 11:06 Status: CLOSE - Bridge Open Incident: CLOSE

2019-1111-B002

Status: CLOSED

Incident Type: BRIDGE INCIDENT LOG Vessel: SILVER DOLPHIN
 Bridge: Walk Bridge Contact: (203) 858-1695
 Request: 11/11/2019 2:00:00PM Notified: TOM

Date & Time Incident Comments

11/11/2019 11:33 Bridge Open Request Created

11/11/2019 14:19 Walk Bridge is open. Vessel was late.

11/11/2019 14:28 Walk is closed.

11/11/2019 14:32 Status: CLOSE - .

2019-1114-B002

Status: CLOSED

Incident Type: BRIDGE INCIDENT LOG Vessel: TIPSEA
 Bridge: Walk Bridge Contact: (203) 249-2285
 Request: 11/15/2019 2:00:00PM Notified: KEVIN

Date & Time Incident Comments

11/14/2019 14:02 Delay Clerk Sean ntfd.

11/15/2019 14:02 Bridge is open.

11/15/2019 14:12 Bridge is closed.

11/15/2019 14:16 Status: CLOSE - Bridge Open Incident: CLOSE

CHIEF RAIL TRAFFIC CONTROLLER'S LOG

Bridge Open Request

Request Open Dates: 1/1/2019 To: 12/31/2019

2019-1117-B001

Status: CLOSED

Incident Type: BRIDGE INCIDENT LOG Vessel: BUCHANAAN 5
 Bridge: Walk Bridge Contact: (516) 369-1914
 Request: 11/17/2019 1:15:00PM Notified: NO

Date & Time Incident Comments

11/17/2019 05:16 Buchanaan 5 has scheduled a Walk Bridge Opening for 1300hrs and 1430hrs on 11/17/19.
 Delay Clerk Valerie ntfed.
 11/17/2019 12:59 Vessel Buchanaan 5 has arrived, Walk Bridge is open.
 11/17/2019 13:11 Walk Bridge is closed.
 11/17/2019 22:27 Status: CLOSE - Bridge Open Incident: CLOSE

2019-1130-B001

Status: CLOSED

Incident Type: BRIDGE INCIDENT LOG Vessel: BUCHANAN 5
 Bridge: Walk Bridge Contact: (516) 369-1914
 Request: 12/1/2019 12:01:00AM Notified: ERIC

Date & Time Incident Comments

11/30/2019 16:42 Return 02:00 Delay Clerk notified
 12/01/2019 00:03 RTC District F advises Walk Bridge is open.
 12/01/2019 00:19 RTC District F advises Walk Bridge is closed.
 12/01/2019 04:33 Status: CLOSE - Bridge Open Incident: CLOSE

2019-1130-B002

Status: CLOSED

Incident Type: BRIDGE INCIDENT LOG Vessel: BUCHANAN 5
 Bridge: Walk Bridge Contact: (516) 369-1914
 Request: 12/1/2019 2:00:00AM Notified: ERIC

Date & Time Incident Comments

11/30/2019 16:55 Return of the 12/1 00:00 hrs opening.
 12/01/2019 01:36 RTC District F advises Walk Bridge is open.
 12/01/2019 01:56 RTC District F advises Walk Bridge is closed.
 12/01/2019 04:37 Status: CLOSE - Bridge Open Incident: CLOSE

2019-1220-B001

Status: CLOSED

Incident Type: BRIDGE INCIDENT LOG Vessel: BUCHANNAN 5
 Bridge: Walk Bridge Contact: (516) 369-1914
 Request: 12/21/2019 5:00:00AM Notified: BILL HACKETT

Date & Time Incident Comments

12/20/2019 11:54 Delay Clerk Ryan notified. Return opening at 0630 hours.
 12/21/2019 05:22 RTC District F reports unable to open Walk Bridge account 40 derail failing. Chief's Log #
 2019-1221-0005
 12/21/2019 05:52 RTC District F reports Walk Bridge is open.
 12/21/2019 06:16 RTC District F reports Walk Bridge is closed.
 12/21/2019 06:26 Status: CLOSE - Bridge Open Incident: CLOSE

CHIEF RAIL TRAFFIC CONTROLLER'S LOG

Bridge Open Request

Request Open Dates: 1/1/2019 To: 12/31/2019

2019-1220-B002

Status: CLOSED

| | | | |
|----------------|----------------------|-----------|----------------|
| Incident Type: | BRIDGE INCIDENT LOG | Vessel: | BUCHANNAN 5 |
| Bridge: | Walk Bridge | Contact: | (516) 369-1914 |
| Request: | 12/21/2019 6:30:00AM | Notified: | BILL HACKETT |

| <u>Date & Time</u> | <u>Incident Comments</u> |
|------------------------|---|
| 12/20/2019 12:01 | Delay Clerk Ryan ntfd. Initial bridge opening 0500 Hrs. |
| 12/21/2019 07:26 | Vessel has arrived for return opening. |
| 12/21/2019 07:56 | Walk Bridge is now open. |
| 12/21/2019 08:16 | Walk Bridge is closed maintainers were able to close the 10 and 20 derails. 40 derails are still out of correspondence, due to same maintainers will manually normal the 40 derails. Reference log item 2019-1221-0005. |
| 12/21/2019 14:39 | Status: CLOSE - Bridge Open Incident: CLOSE |

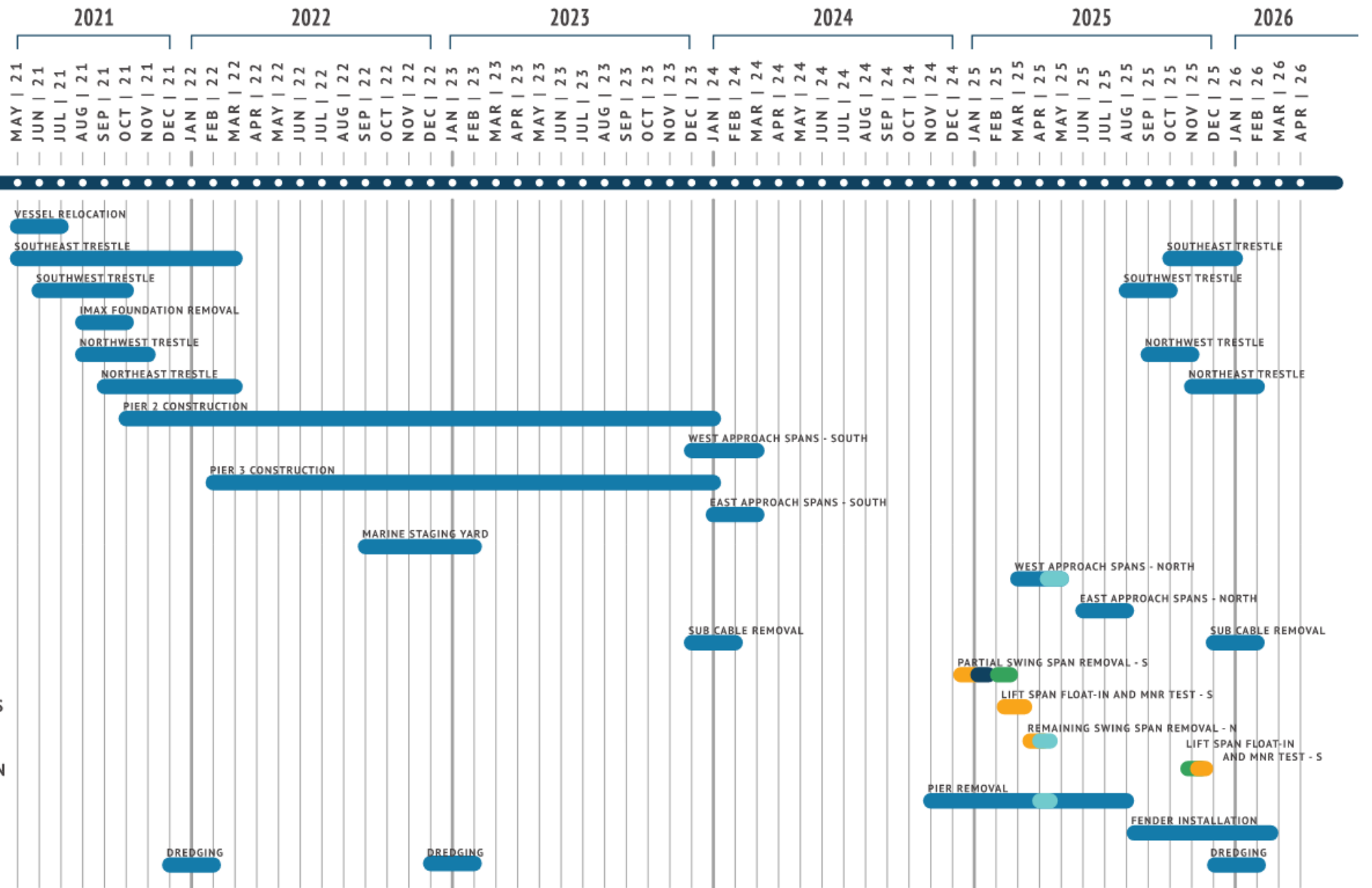
Appendix C
In-Water Work Schedule

Obtained from *Walk Bridge Program – In-Water Work Plan* by CMJV



Walk Bridge Replacement Project

IN-WATER WORK SCHEDULE



From CMJV In-Water Work Plan Presentation to Norwalk Harbor Management Commission on 8-26-20

The dates shown here are subject to change based on the actual start of construction date and permit conditions received.

- Partial Channel Closure
- Partial Channel Closure with Height Restriction
- West Channel Open East Channel Closure
- Full Channel Closure
- Height Restriction